

Frank Hinchey - Fair

Rutland Historical Society

Circus Wagon with Six Horse Team - Setting Up Tents in the Background





*Frank Hinchey - Fair*

*Rutland Historical Society*

Man on Horse Pulled by Other Horses





*Frank Hinchey - Fair*

*Rutland Historical Society*

Unloading Wagon in Foreground, Tents and Other Wagons in Background





Unloading Wagons



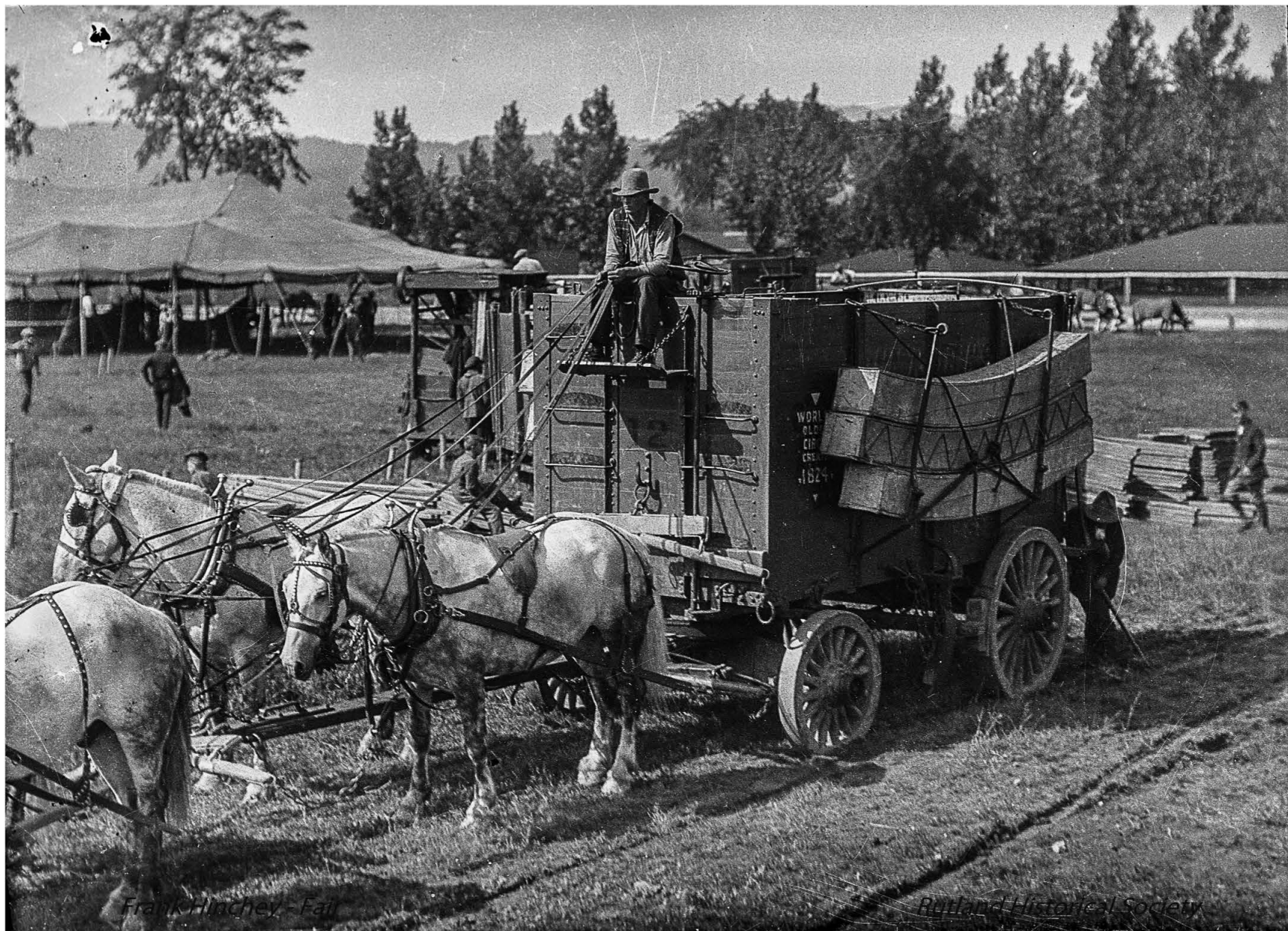


*Frank Hinchey - Fair*

*Rutland Historical Society*

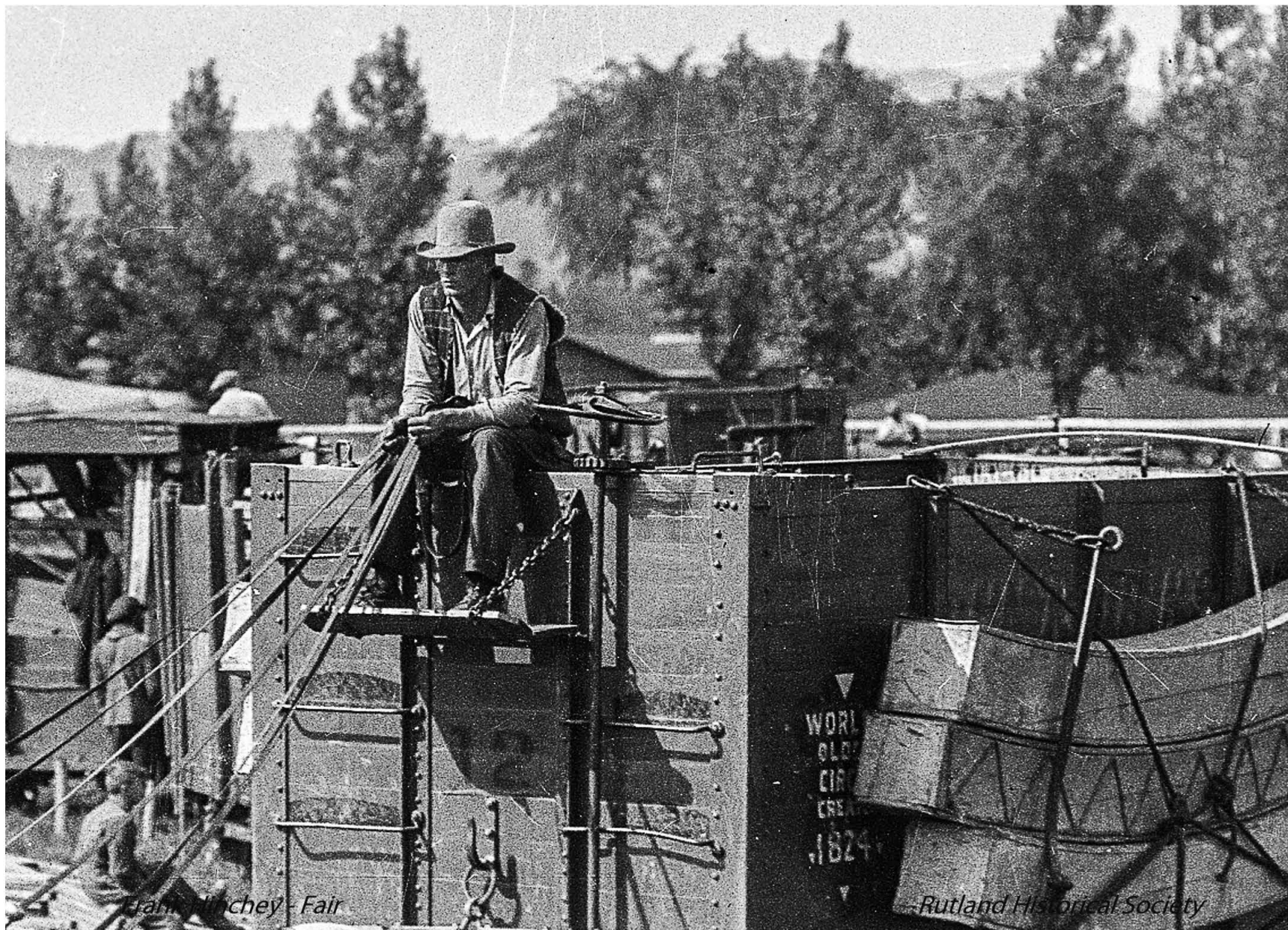
Preparing to Set Up the Tents





Circus Equipment Wagon; according to the sign on the wagon, the Circus was started in 1824



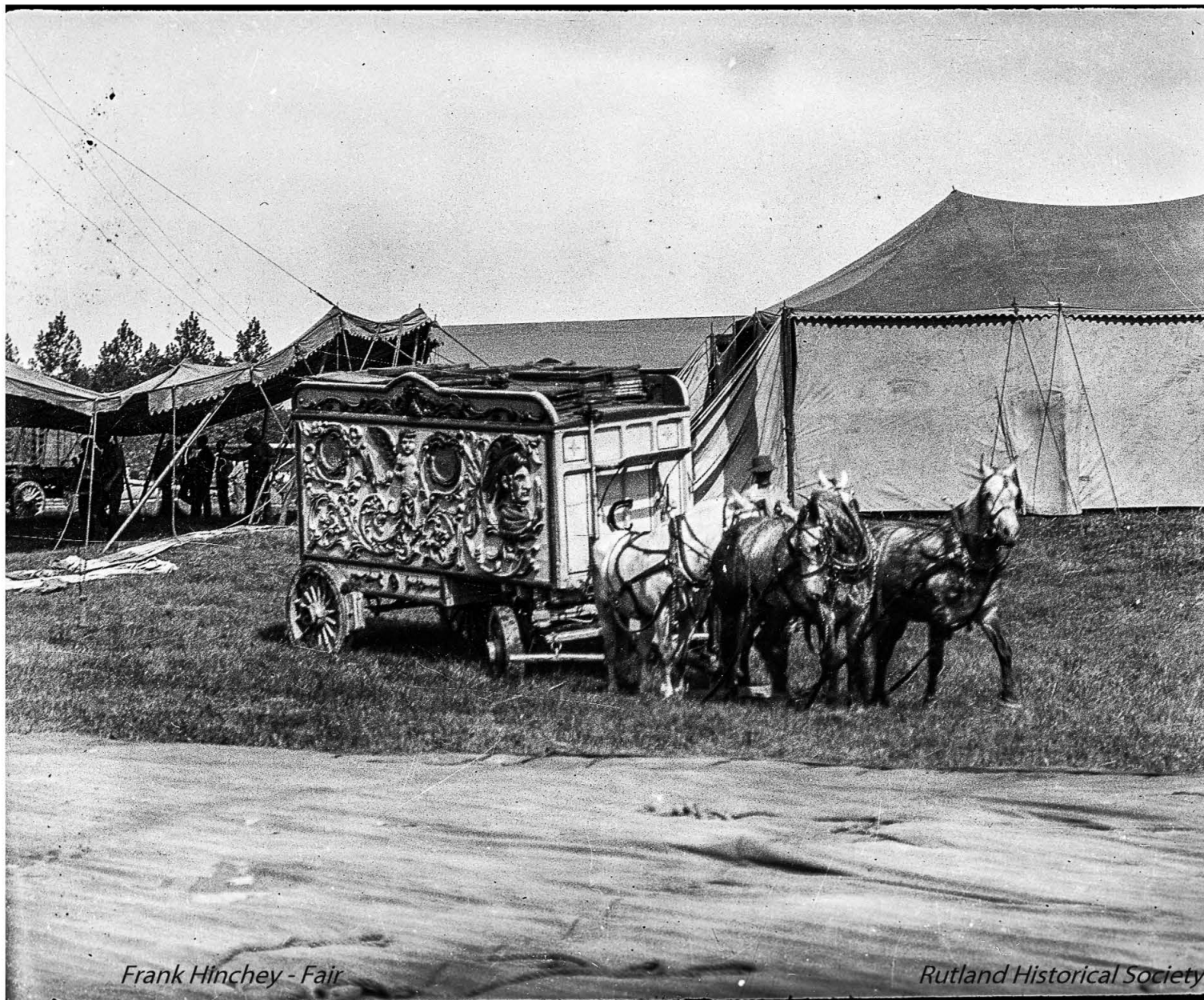


*Fair Play - Fair*

*Rutland Historical Society*

Cowboy Driver



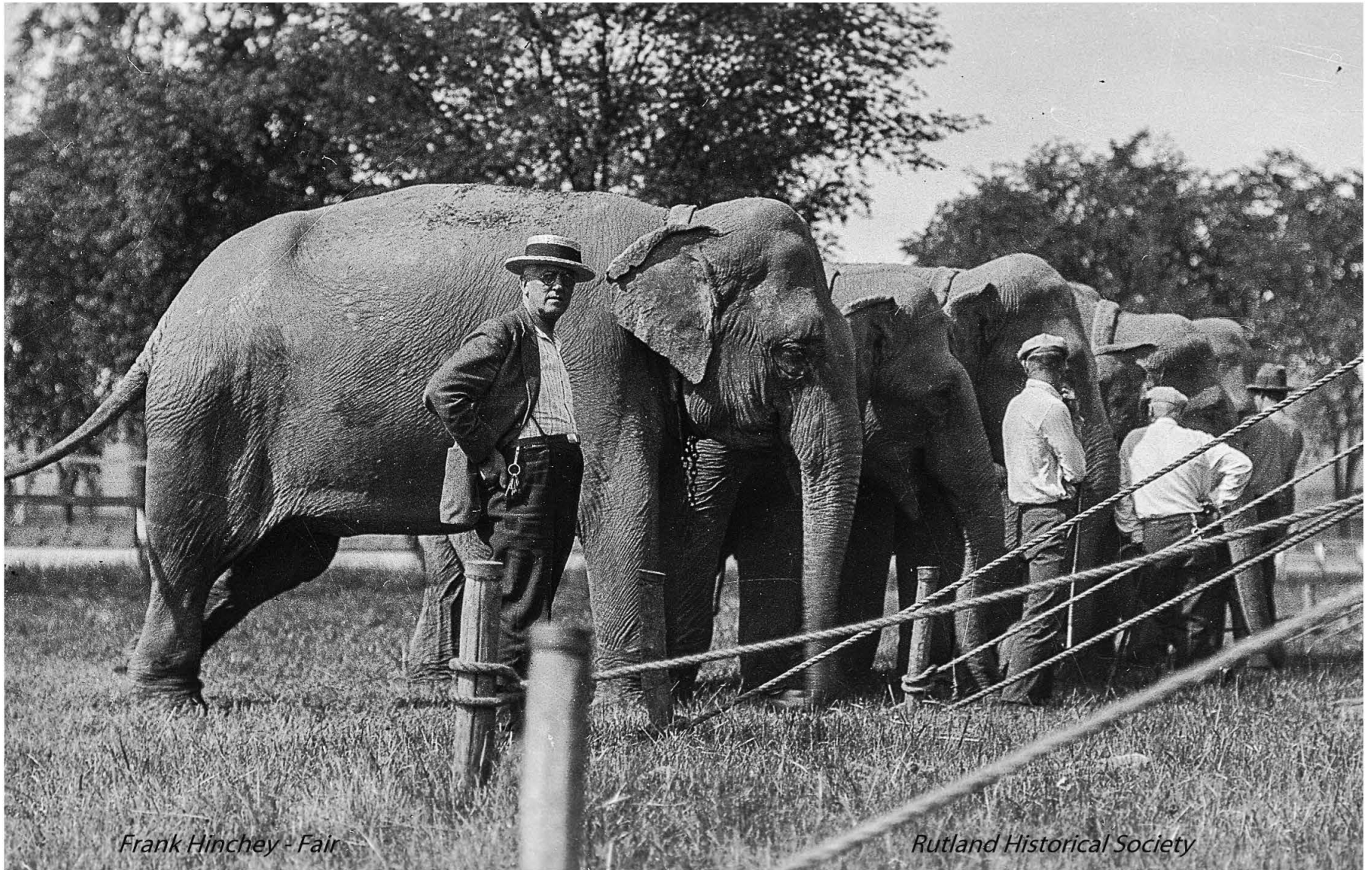


*Frank Hinchey - Fair*

*Rutland Historical Society*

Ornate Circus Wagon





Inspecting the Elephants





*Frank Hinchey - Fair*

*Rutland Historical Society*

Elephants Doing Their Part





*Frank Hinchey - Fair*

*Rutland Historical Society*

Setting Up





*Frank Hinchey - Fair*

*Rutland Historical Society*

Local Boys Hoping to Lend a Hand





Park Street; Industrial Building and Ticket Office





*Frank Hinchey - Fair*

*Rutland Historical Society*

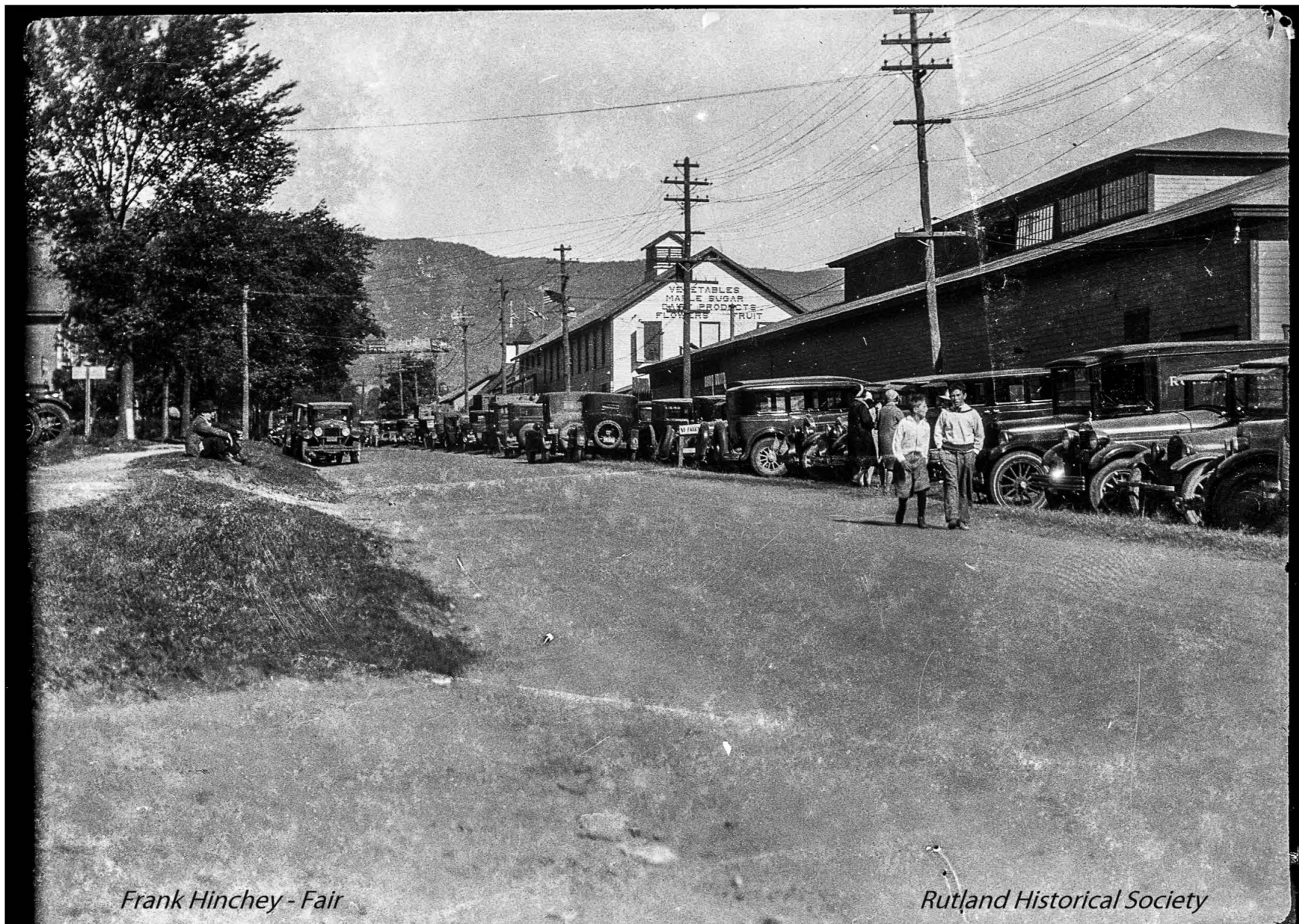
Man and Auto with Old Grandstand Behind Him





Park Street; School and Residences on the Left; Fair Buildings on the Right





*Frank Hinchey - Fair*

*Rutland Historical Society*

Park Street Fair Parking; Note the "No Parking" Sign in the Midst of Cars





Frank Hinchey - Fair

Rutland Historical Society

Fair Cars





4-H Building in the Background; Ticket Booth in the Foreground





Fair Cars and Crowds in the Stands





*Frank Hinchey - Fair*

*Rutland Historical Society*

J R Polar Bears



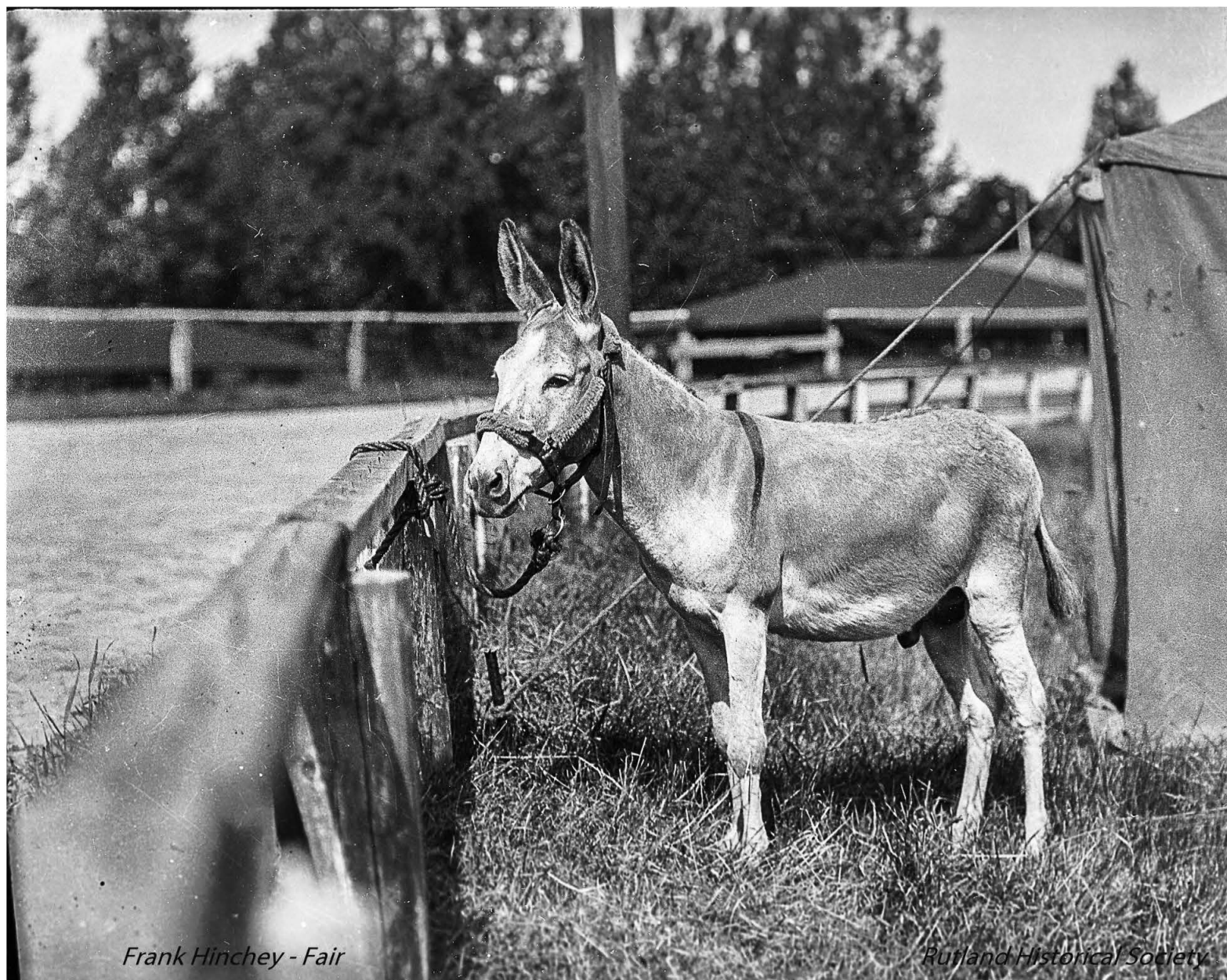


*Frank Hinchey - Fair*

*Rutland Historical Society*

J R Polar Bears



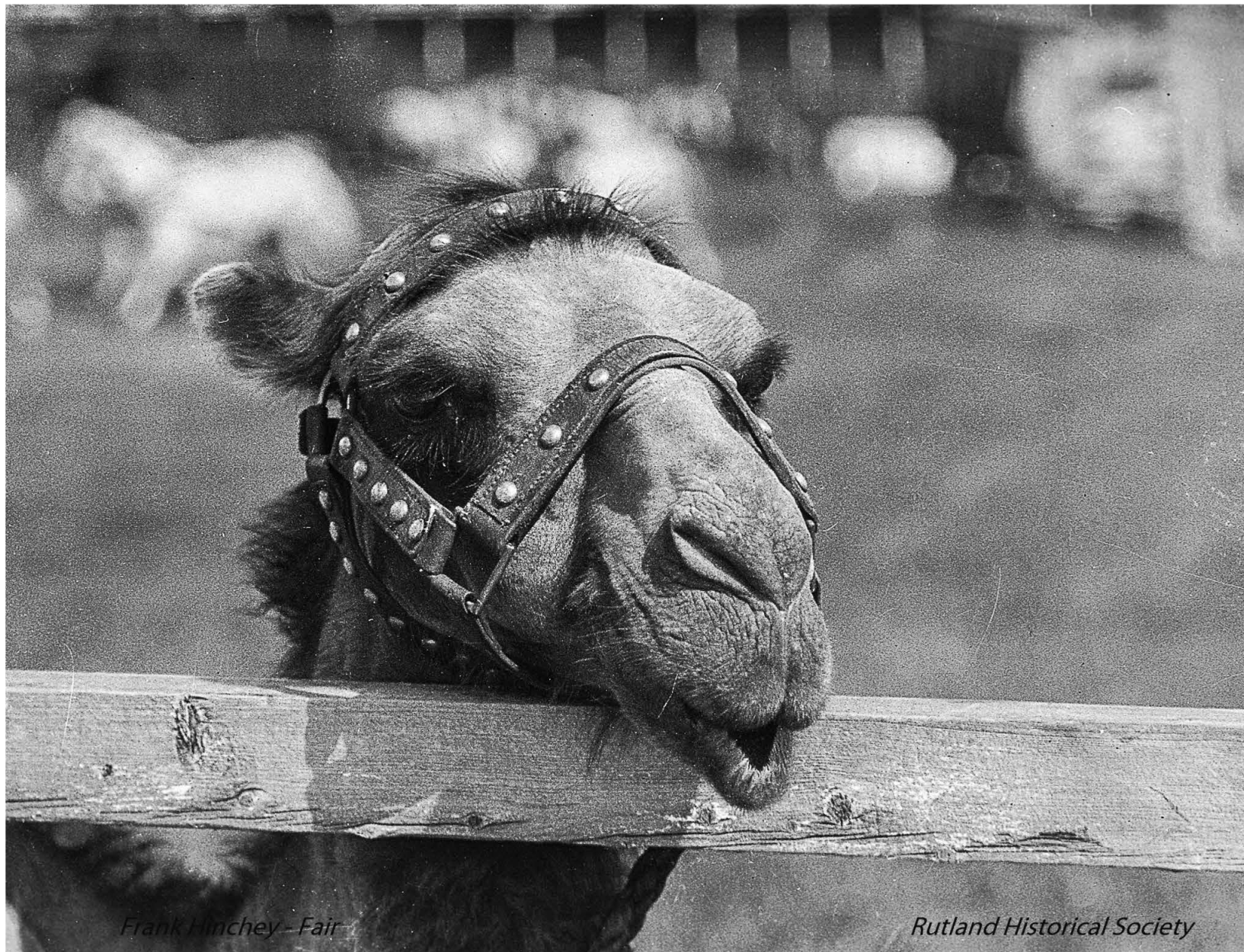


*Frank Hinchey - Fair*

*Rutland Historical Society*

Lone Donkey





*Frank Hinchey - Fair*

*Rutland Historical Society*

A Very Serious Looking Camel

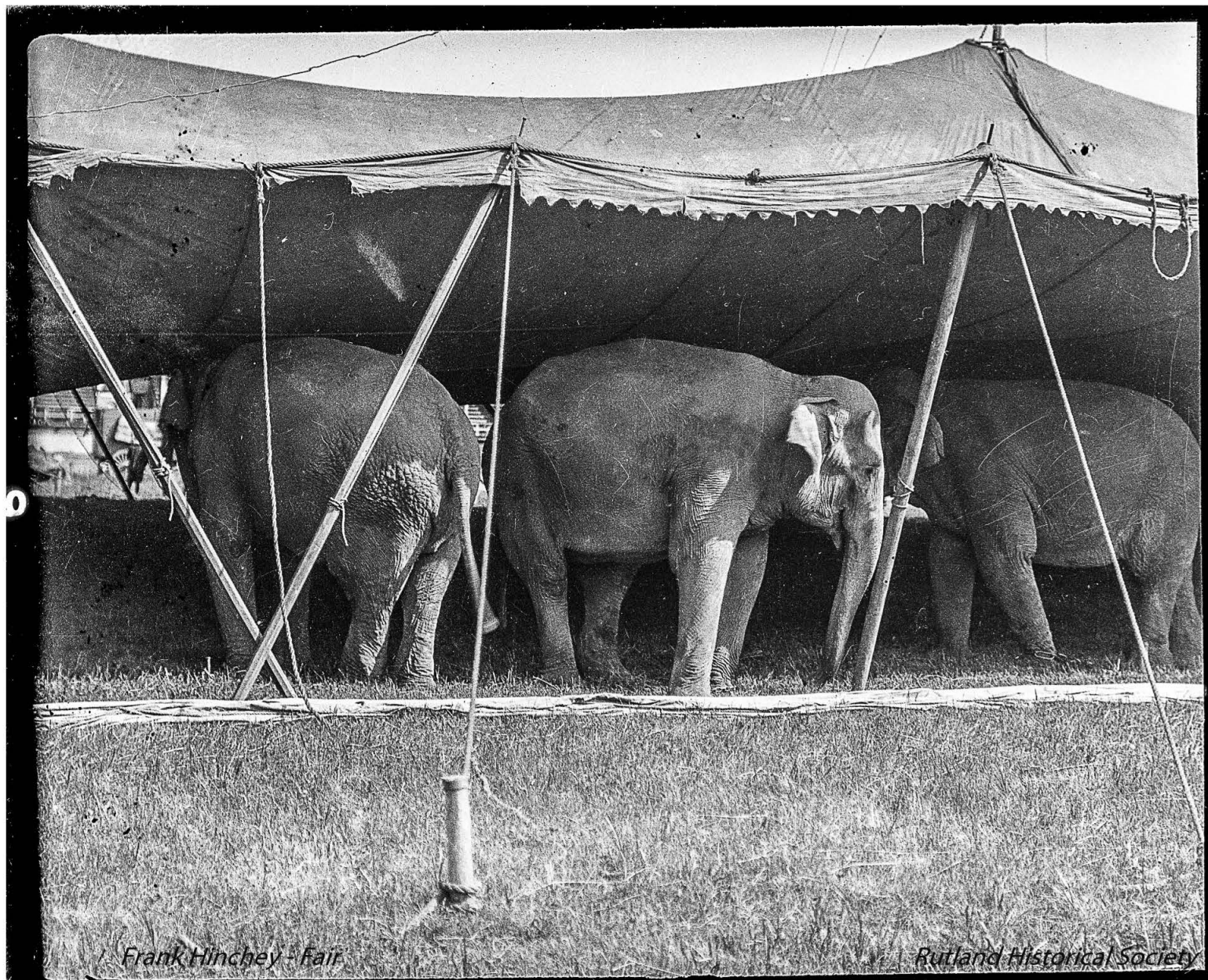




*Frank Hinchey - Fair*

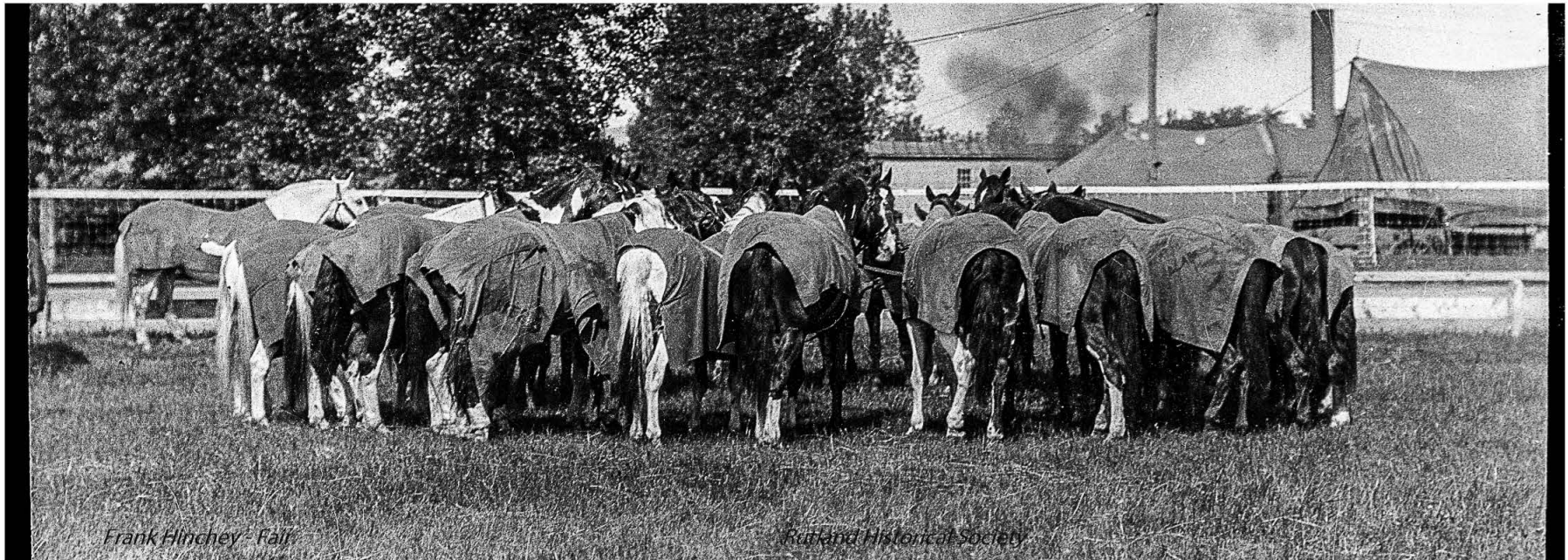
Proud Camel





Elephants Under a Tent





*Frank Hinchey - Fair*

*Rutland Historical Society*

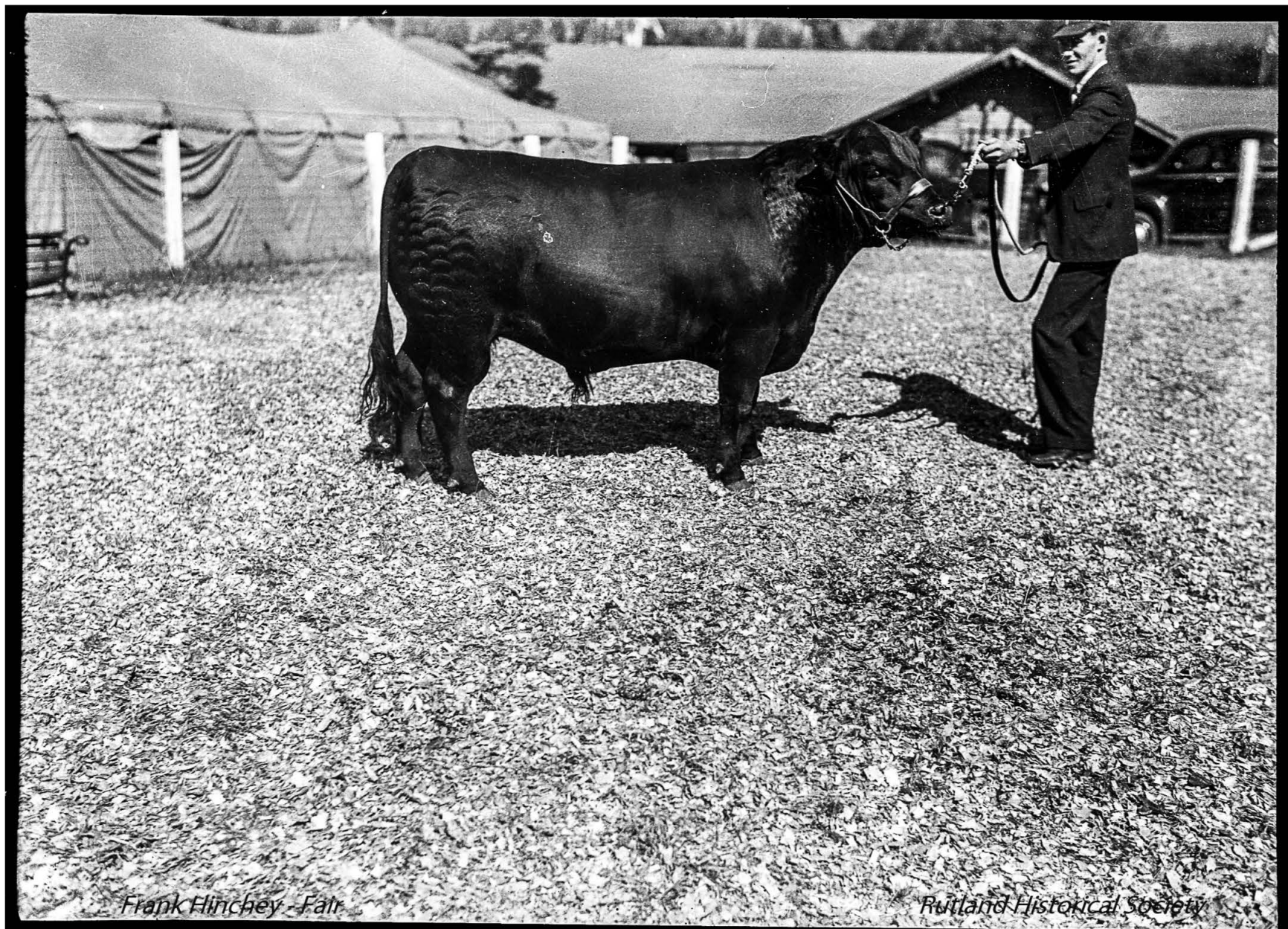
Conclave of Horses





Livestock Competition



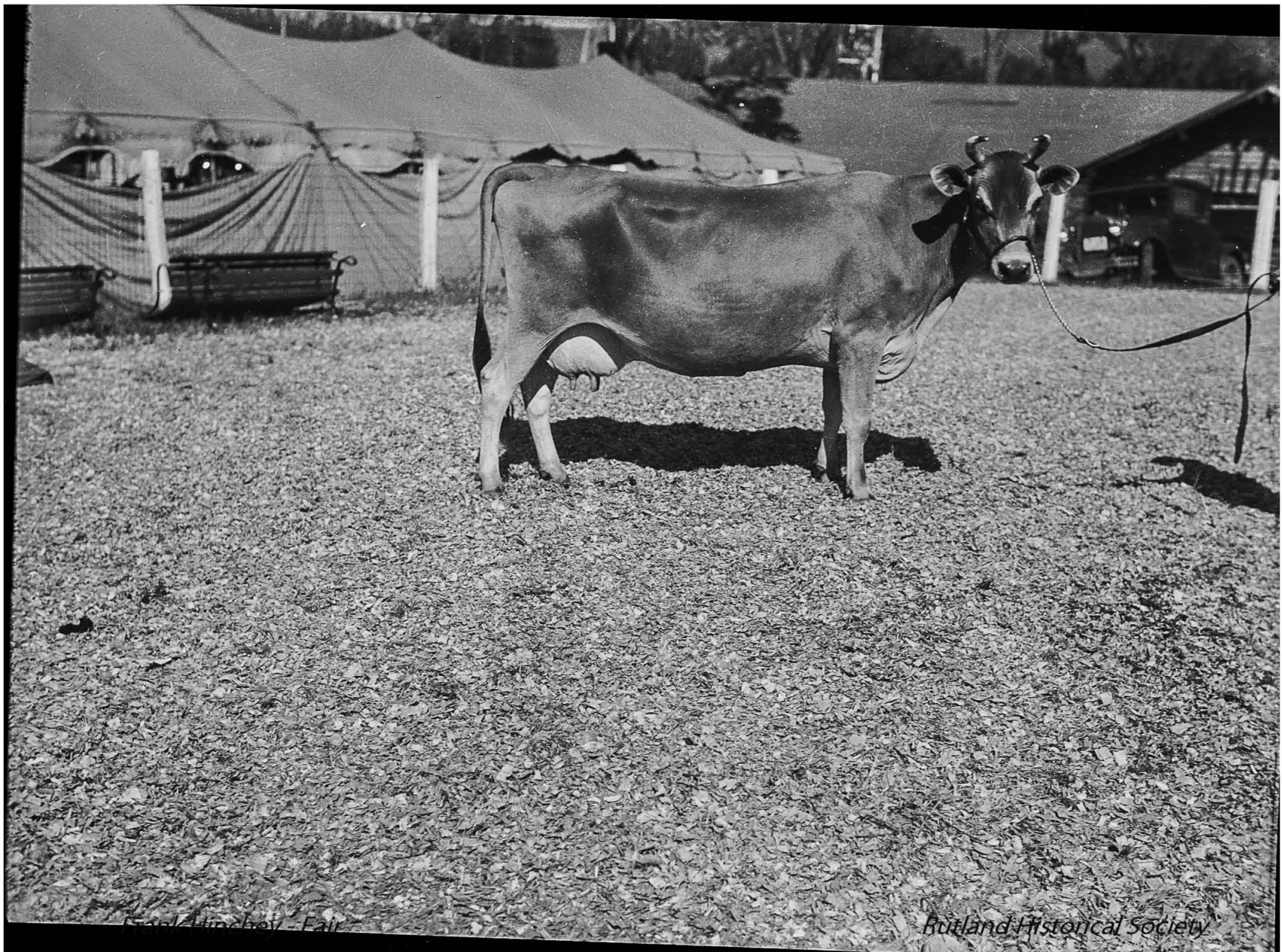


*Frank Hinchey - Fair*

*Rutland Historical Society*

Livestock Competition



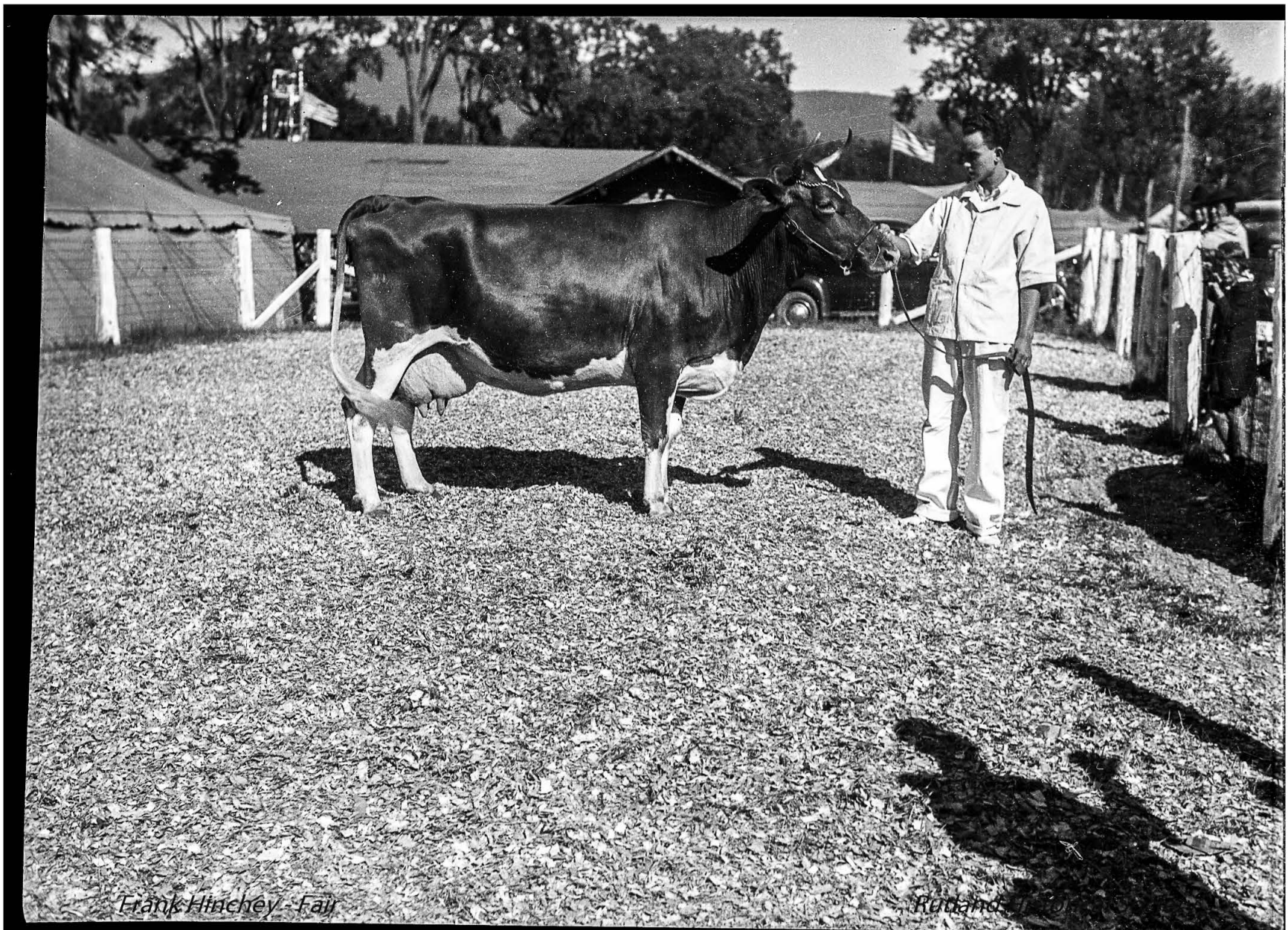


Woolwich Fair

Butland Historical Society

Livestock Competition





Frank Hinchey - Fair

Rutland, Vt.

Livestock Competition



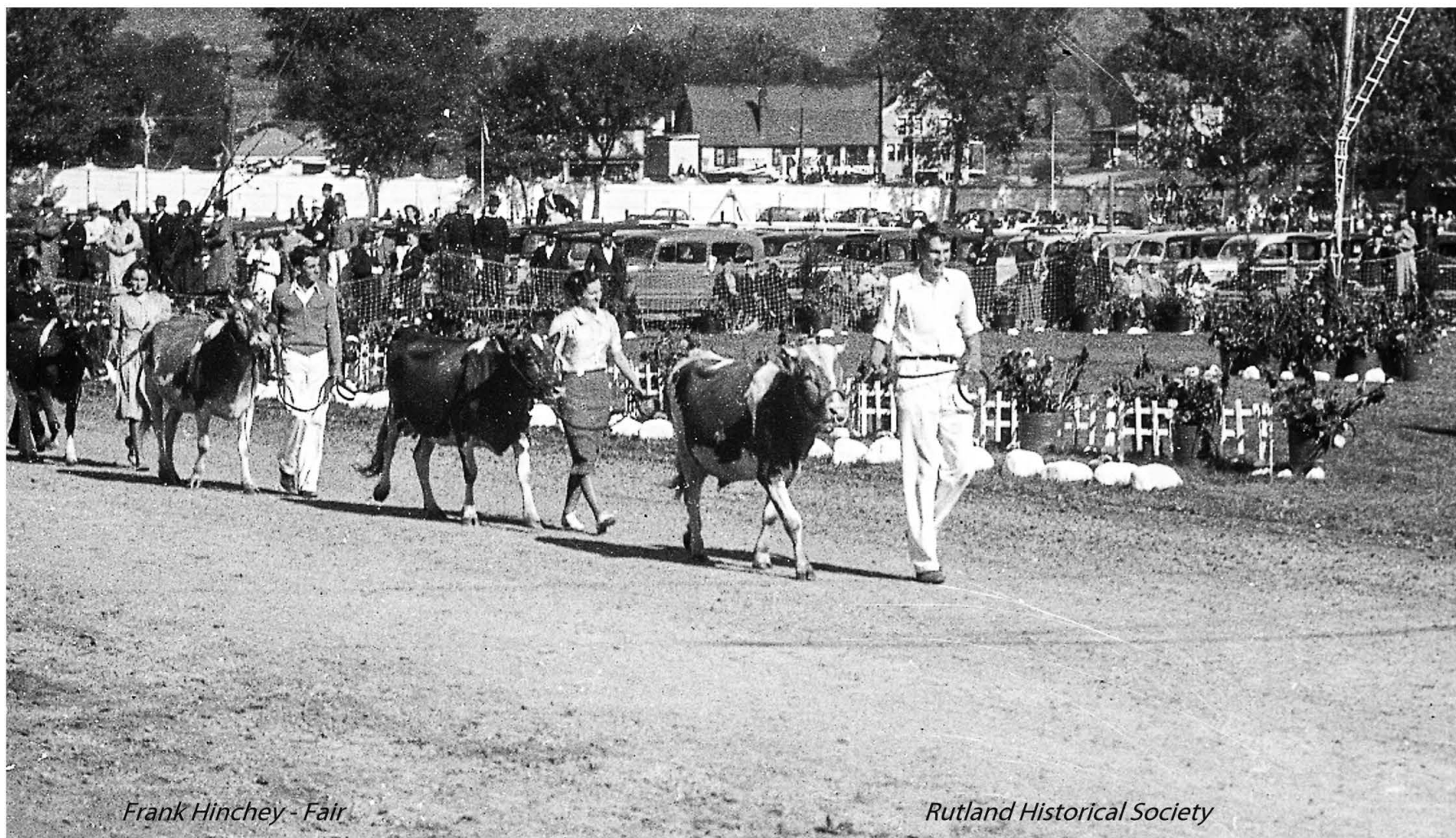


Frank Hinchey Fair

Rutland Historical Society

Livestock Competition





*Frank Hinchey - Fair*

*Rutland Historical Society*

Livestock and People Parade





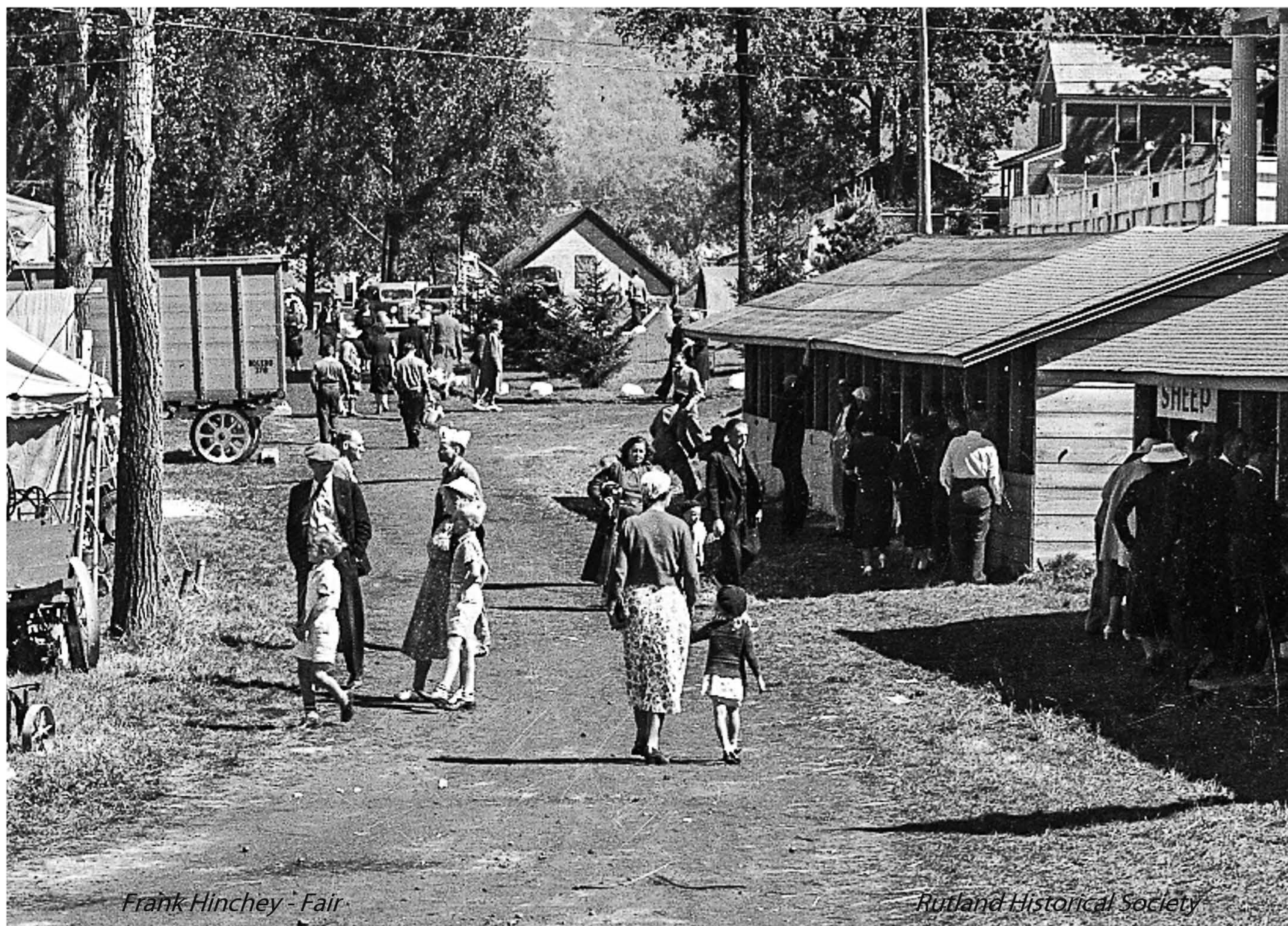
Livestock Competition





Strolling Through the Exhibit Area; 4-H Building in Background





*Frank Hinchey - Fair*

*Rutland Historical Society*

Looking at the Exhibits





Looking at the Sheep





Frank Hinchey - Fair

Rutland Historical Society

William Abraham Co. and Souvenir Canes Made in Vermont





*Frank Hinchey - Fair*

*Rutland Historical Society*

William Abraham Co. and Souvenir Canes Made in Vermont





*Frank Hinchey - Fair*

*Rutland Historical Society*

F. J. Seward Milking Equipment and McCormick-Deering Power Farm Equipment





Guess Your Weight with Prizes





*Frank Linchey - Fair*

*Rutland Historical Society*

Small Boy Hoping to Win One of the Prizes





First Aid Station



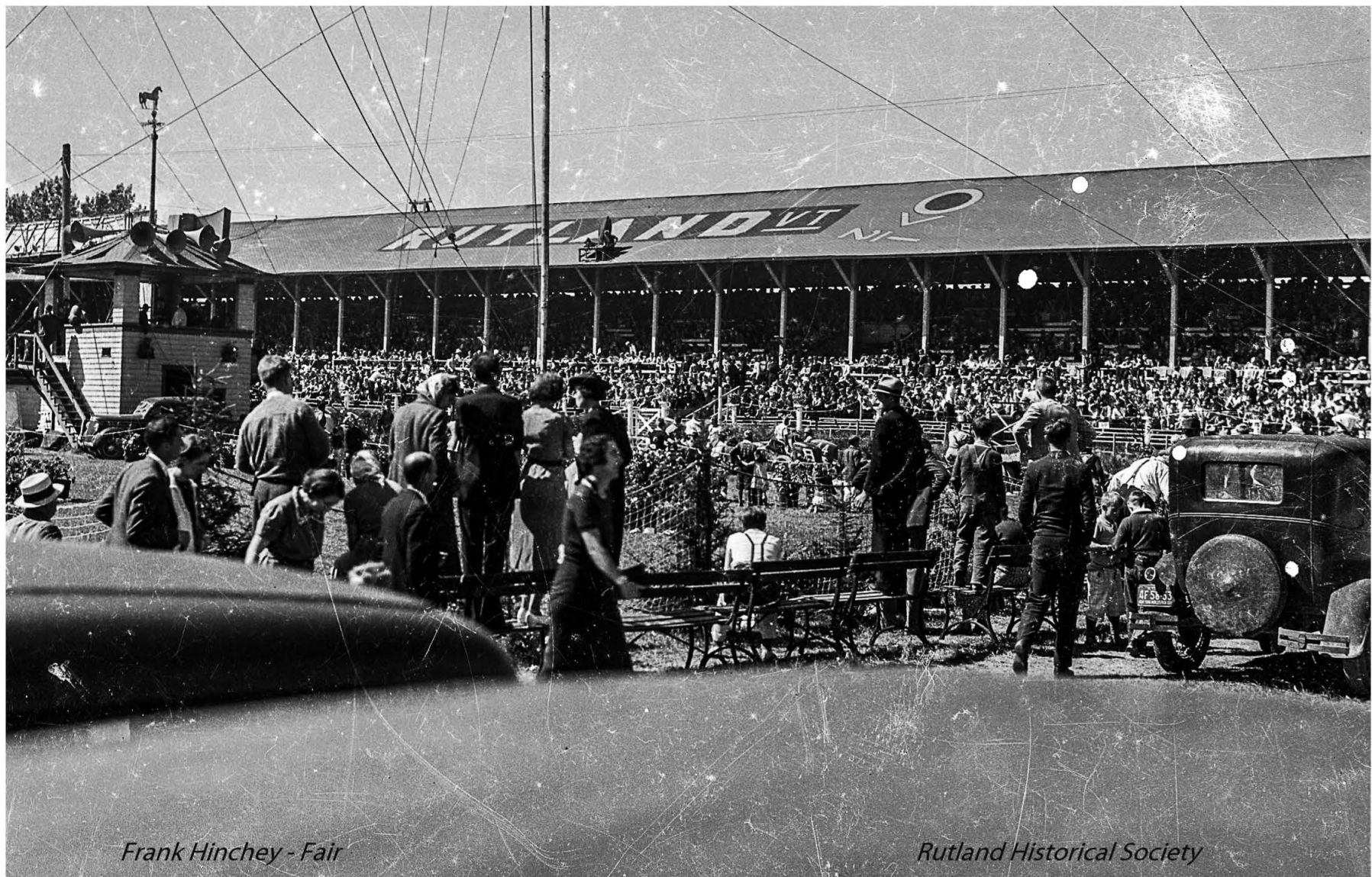


*Frank Hinchey - Fair*

*Rutland Historical Society*

Crowd at G.H. Grimm



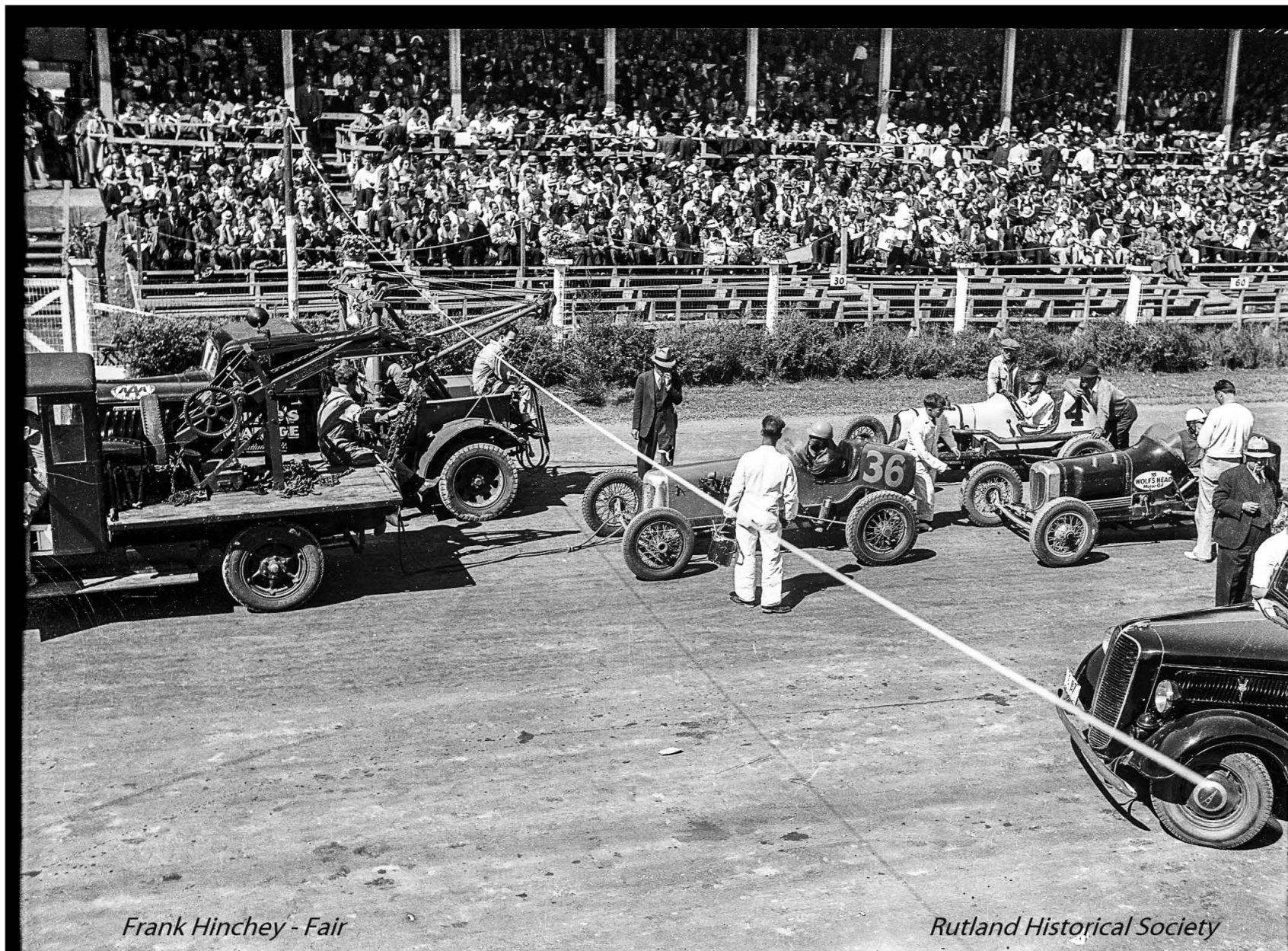


*Frank Hinchey - Fair*

*Rutland Historical Society*

Viewing from the Oval; Reviewing Stand on the Left



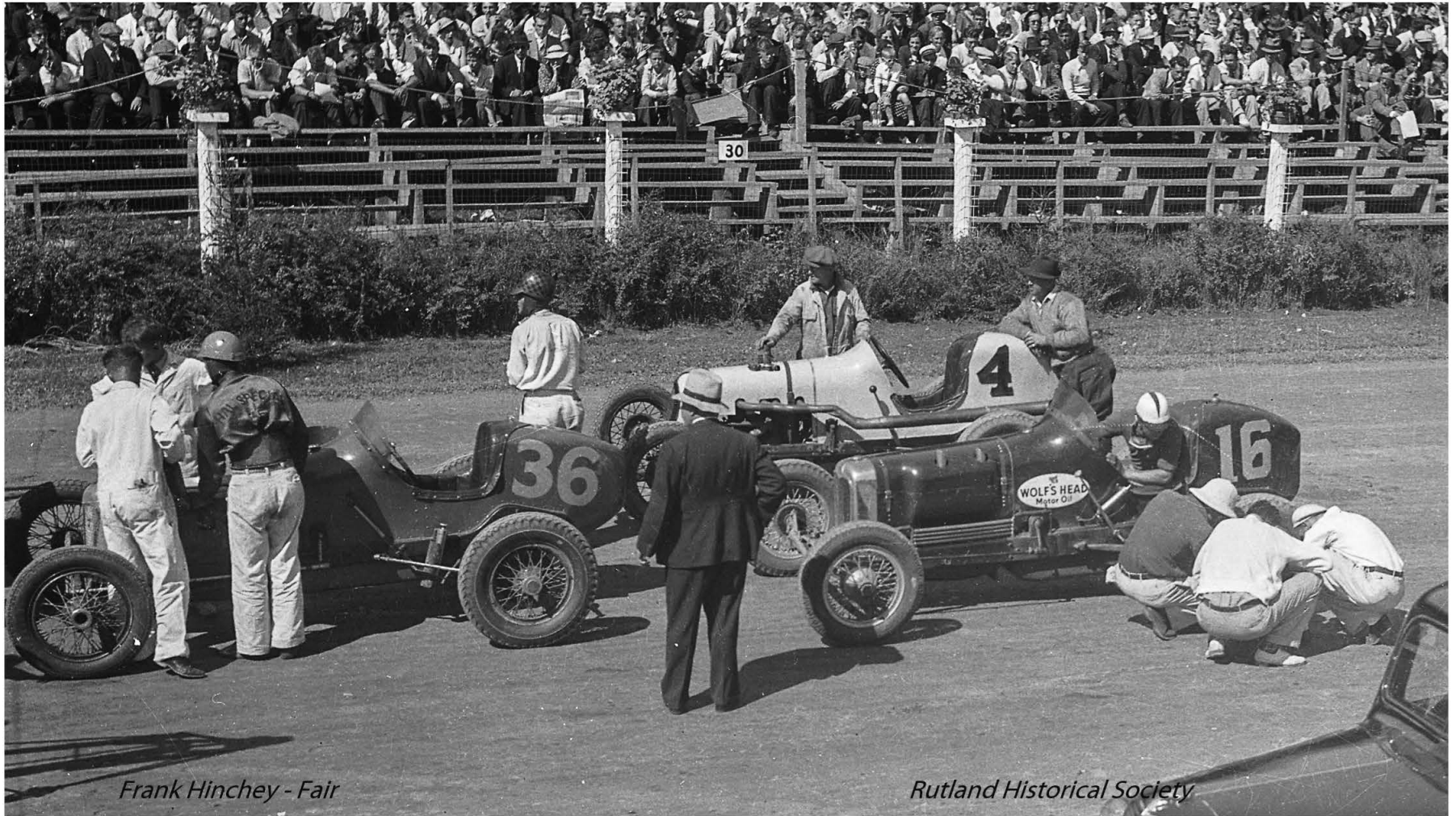


*Frank Hinchey - Fair*

*Rutland Historical Society*

Race Cars - Number 36



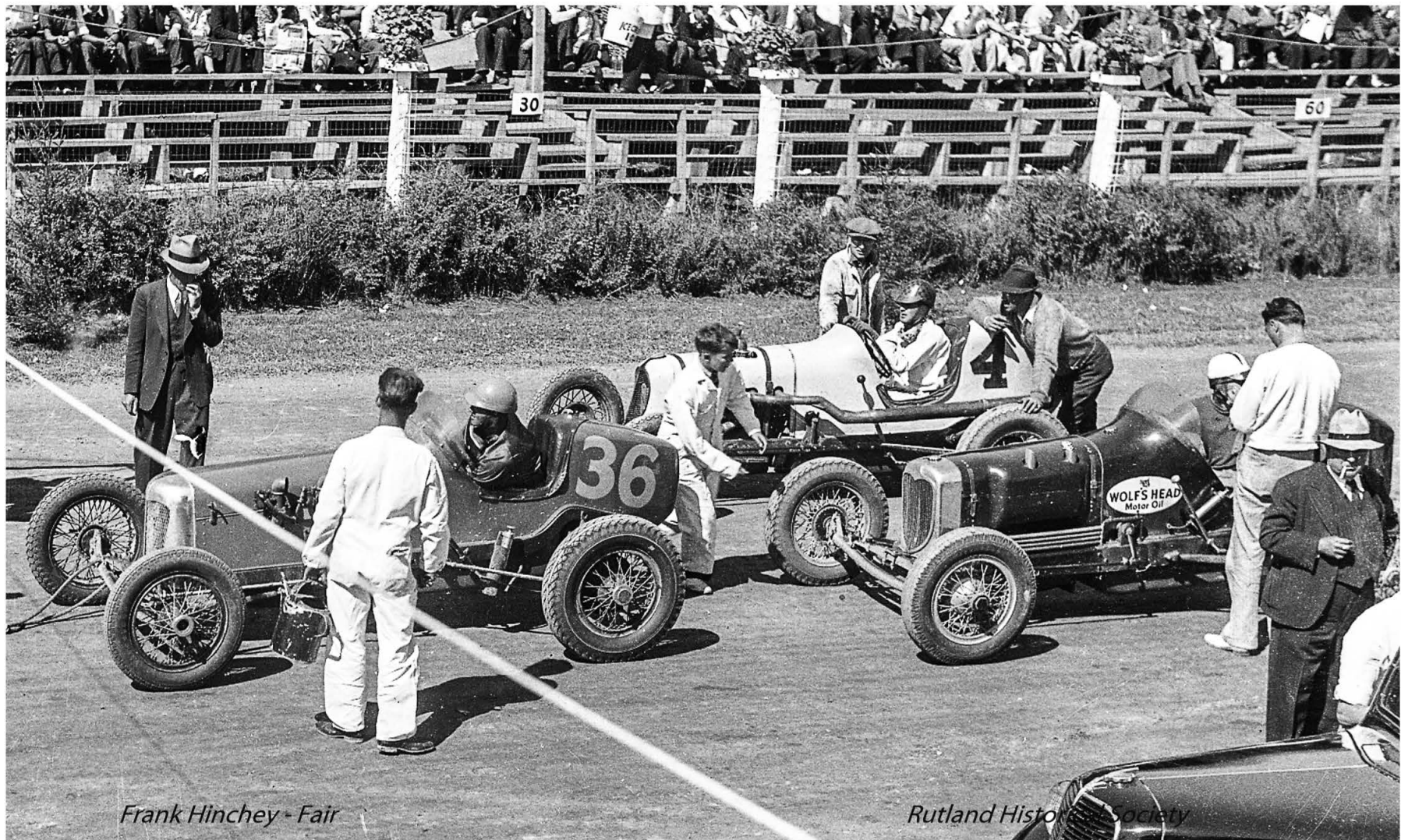


*Frank Hinchey - Fair*

*Rutland Historical Society*

Race Cars - #4, #36, and #16



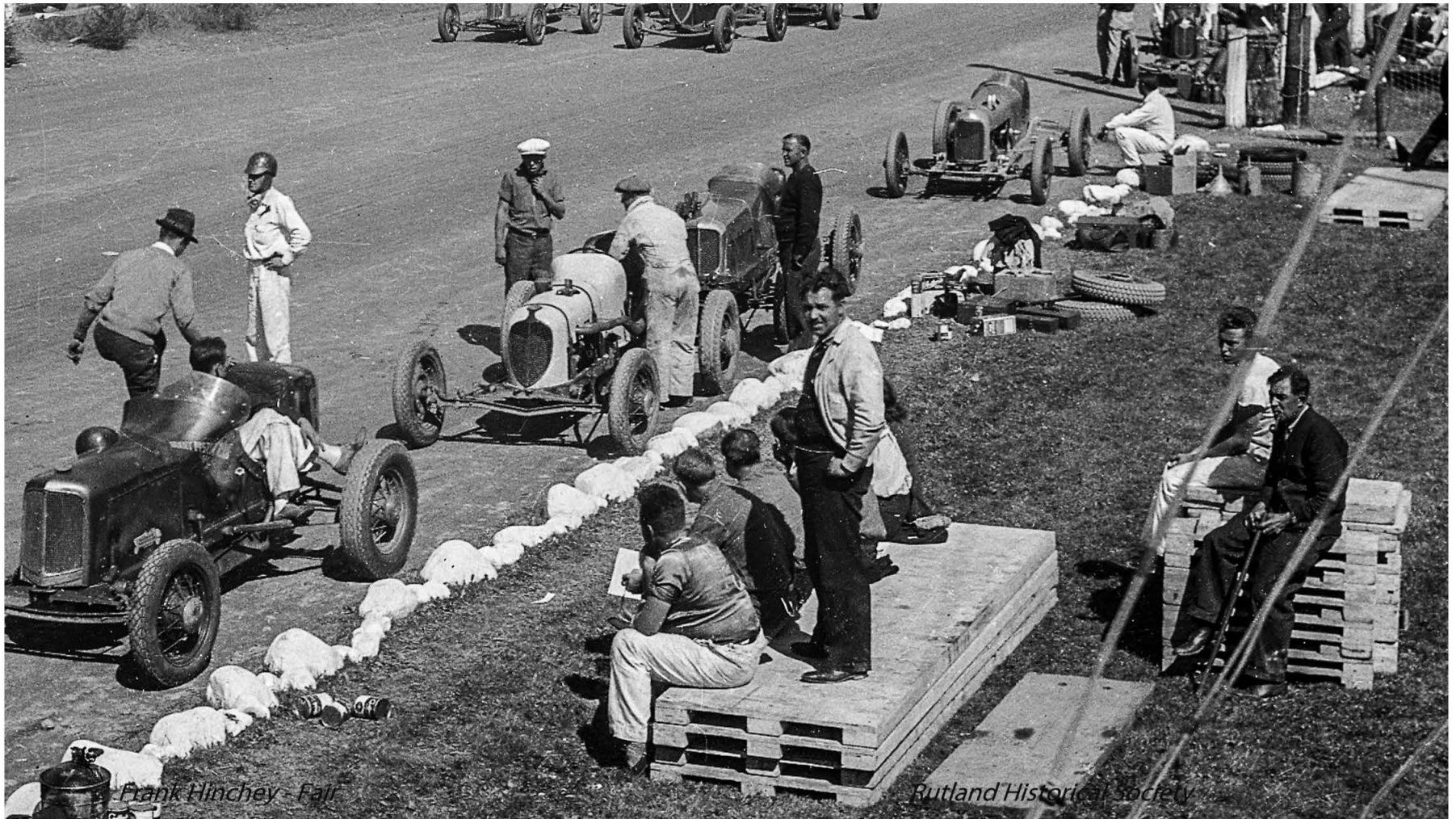


*Frank Hinchey - Fair*

*Rutland Historical Society*

Race Cars - #4, #36, and #16





Pit Crew Getting Ready





Lucky Teter Hell Drivers - an Auto Thrill Show started in the 1930s. Lucky was killed in a jump in the early 1940s.





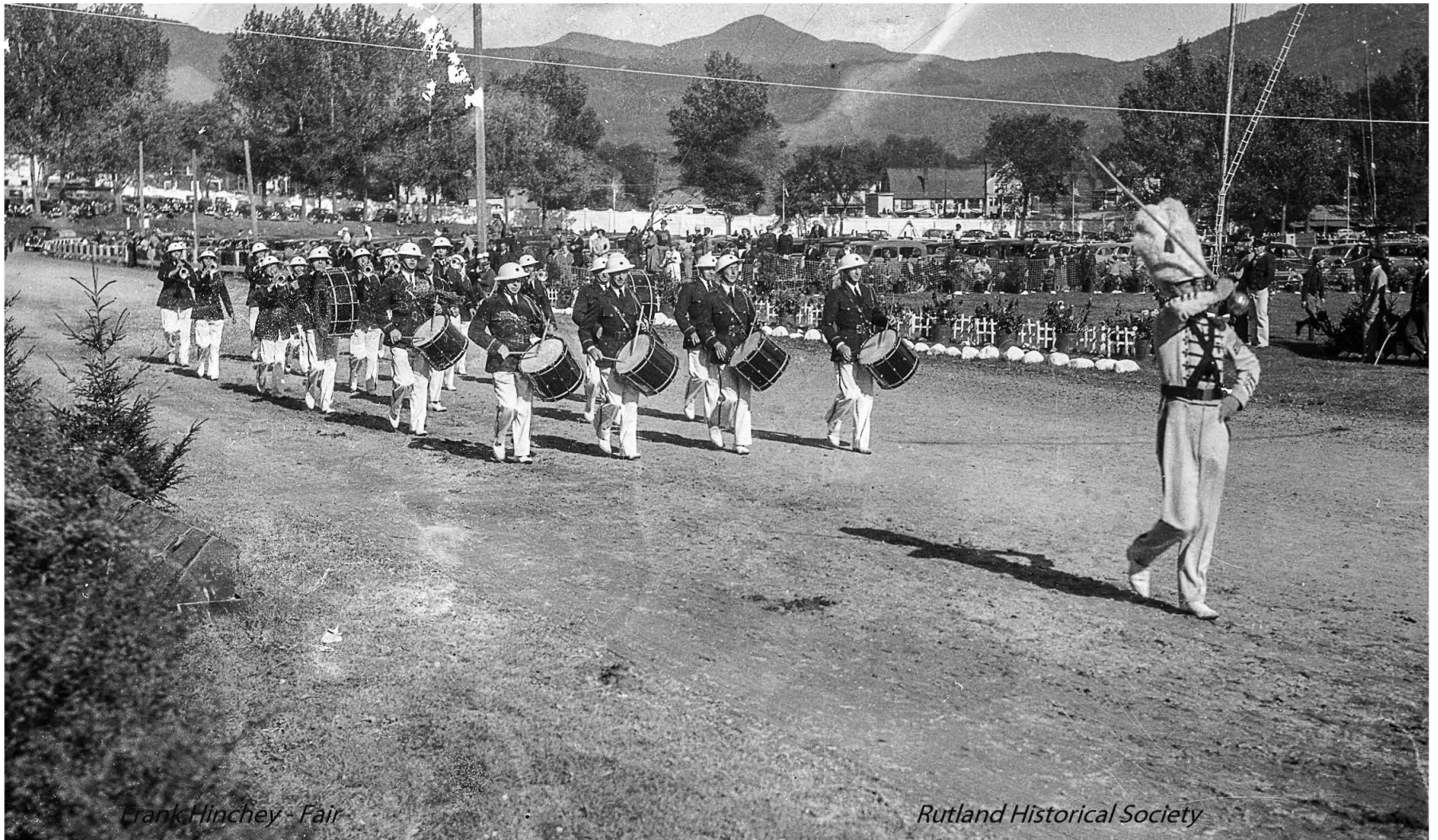
Pate's Garage Brandon - Towing Service





Marching; South Main Street in the Background





*Frank Hinchey - Fair*

*Rutland Historical Society*

Marching Band





*Frank Hinchey - Fair*

*Rutland Historical Society*

Dignitaries





Frank Hinchey - Fair

Rutland Historical Society

Dignitary





Side Shows 10 Cents - Park Street School in the Background





*Frank Hinchey - Fair*

*Rutland Historical Society*

Fair Finery with Roll 'O' Plane in the Background





Little Ones in Awe





*Frank Hinchey - Fair*

*Rutland Historical Society*

Over the Fence if You Can't Afford the Main Gate





Franklinchey Fair

Rutland Historical Society

Deciding What to See Next





Ferris Wheel Riders





Ridee-O in background.





Ridee-O Closeup



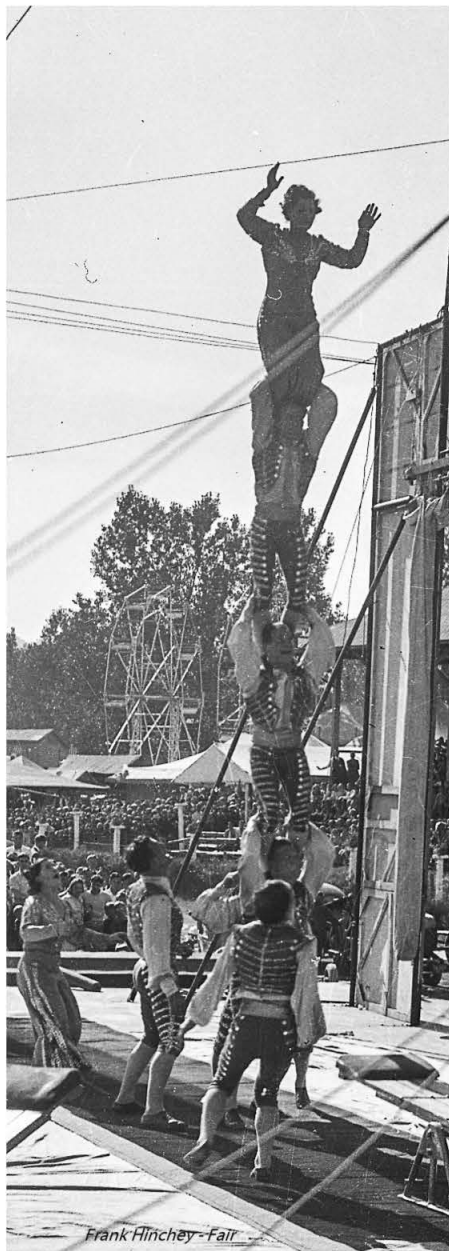


*Frank Hinchey - Fair*

*and Historical Society*

*Eagle Eye*





Frank Hincley - Fair

Human Tower





*Frank Hinchey - Fair*

*Rutland Historical Society*

Camaraderie Among Fair Participants





*Frank Hinchey - Fair*

*Rutland Historical Society*

Federal Trucks - Howards' Garage



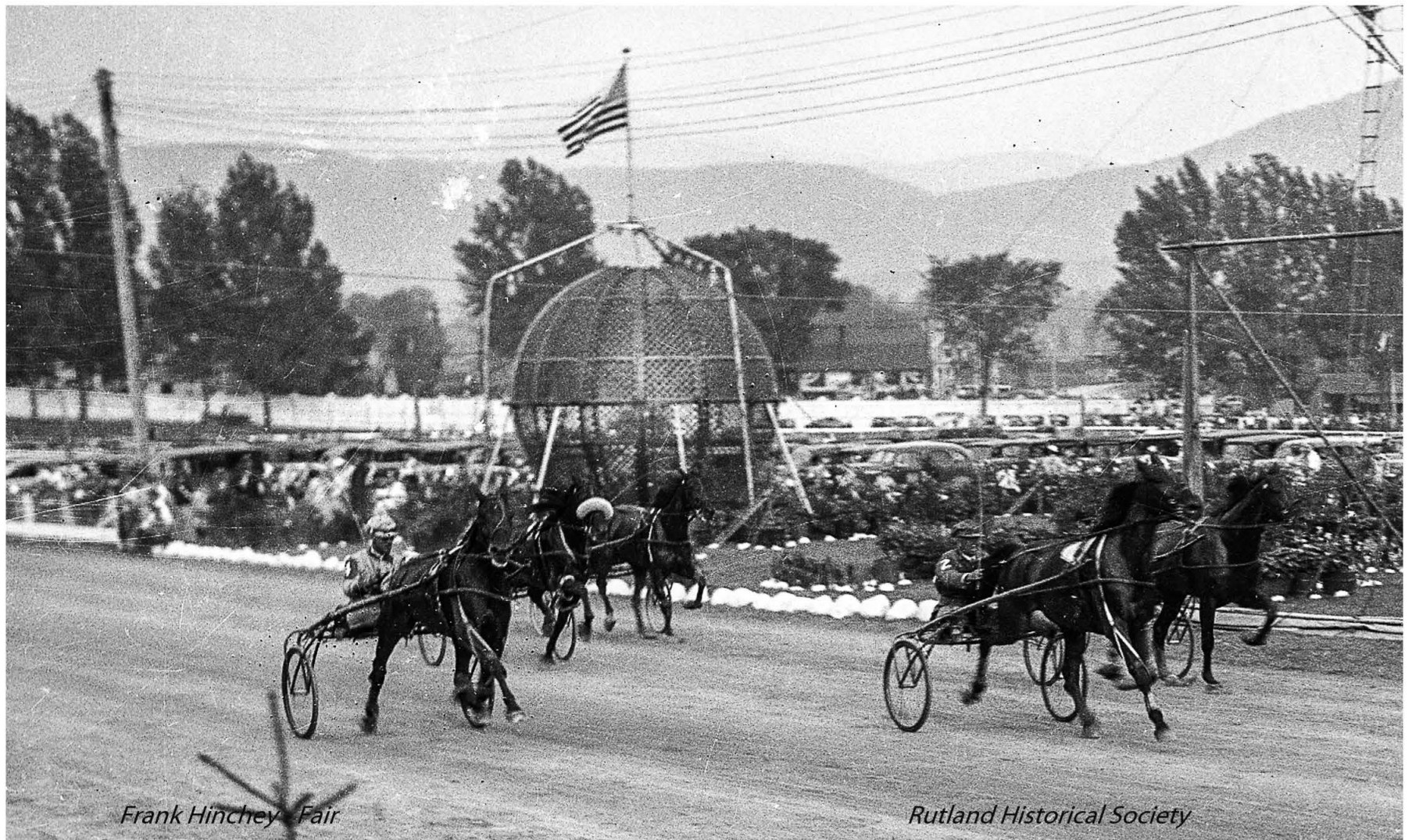


*Frank Hinchey - Fair*

*Rutland Historical Society*

Smiling for the Camera





*Frank Hinchey Fair*

*Rutland Historical Society*

Spherical Cage Behind Trotters





*Frank Hinchey - Fair*

*Rodney Historical Society*

At the Turn





*Frank Hinchey - Fair*

*Rutland Historical Society*

In the Lead



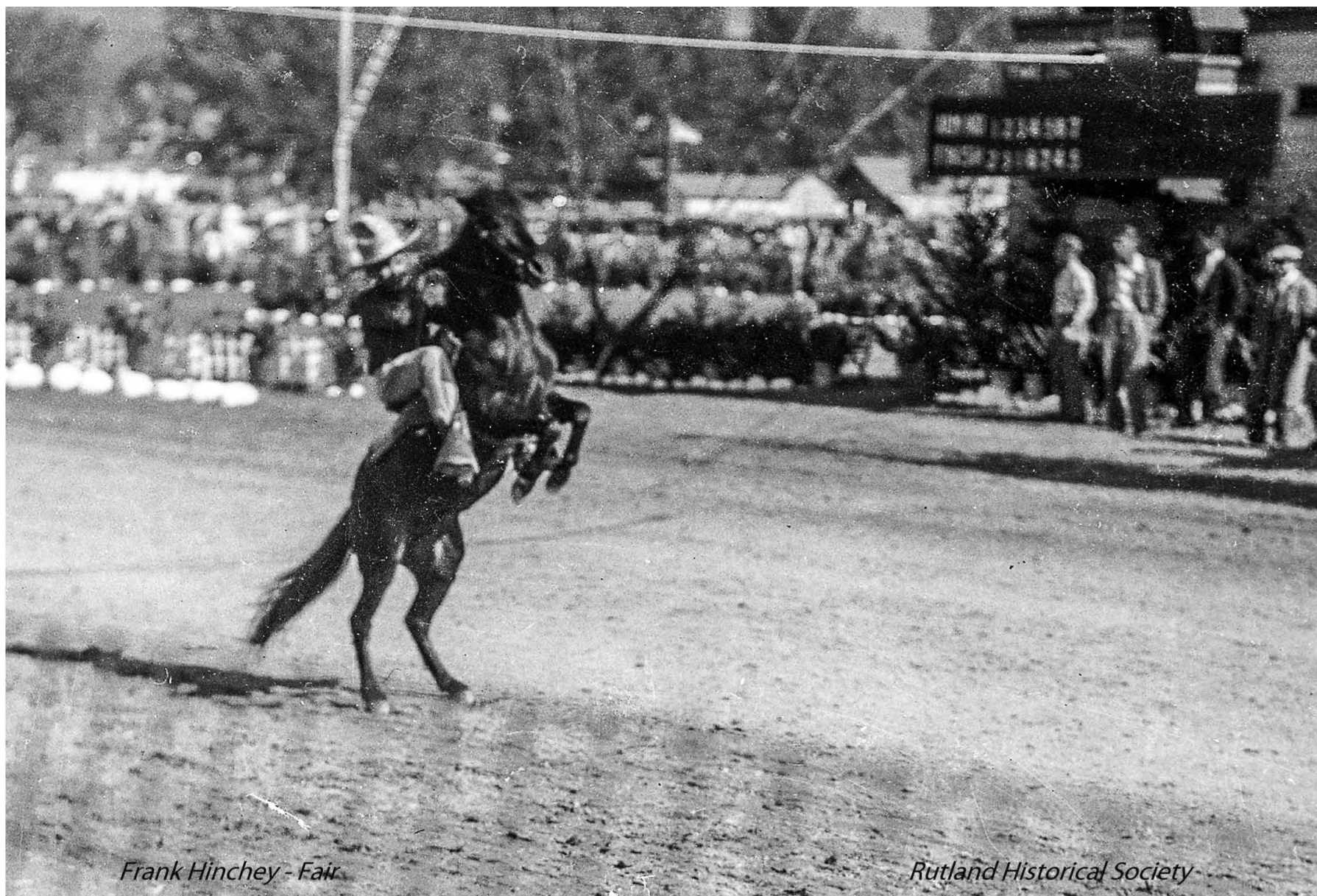


*Frank Hinchey - Fair*

*Rutland Historical Society*

Whoa





*Frank Hinchey - Fair*

*Rutland Historical Society*

Rearing Up - Holding on Tight





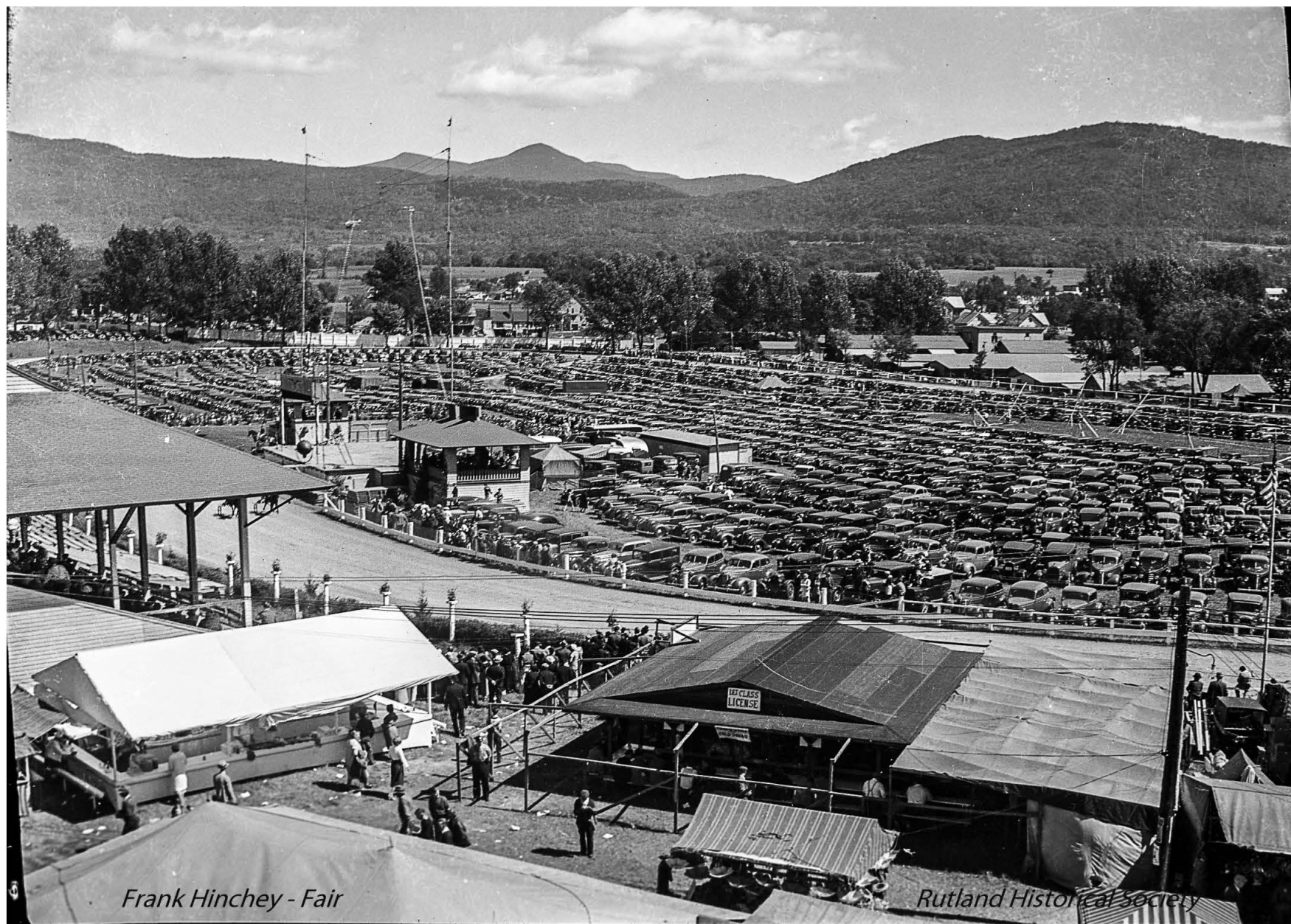
C. F. Flanders Co. Rutland - Industrial Machinery





C. F. Flanders Co. Rutland and Vermont Road Equipment Montpelier



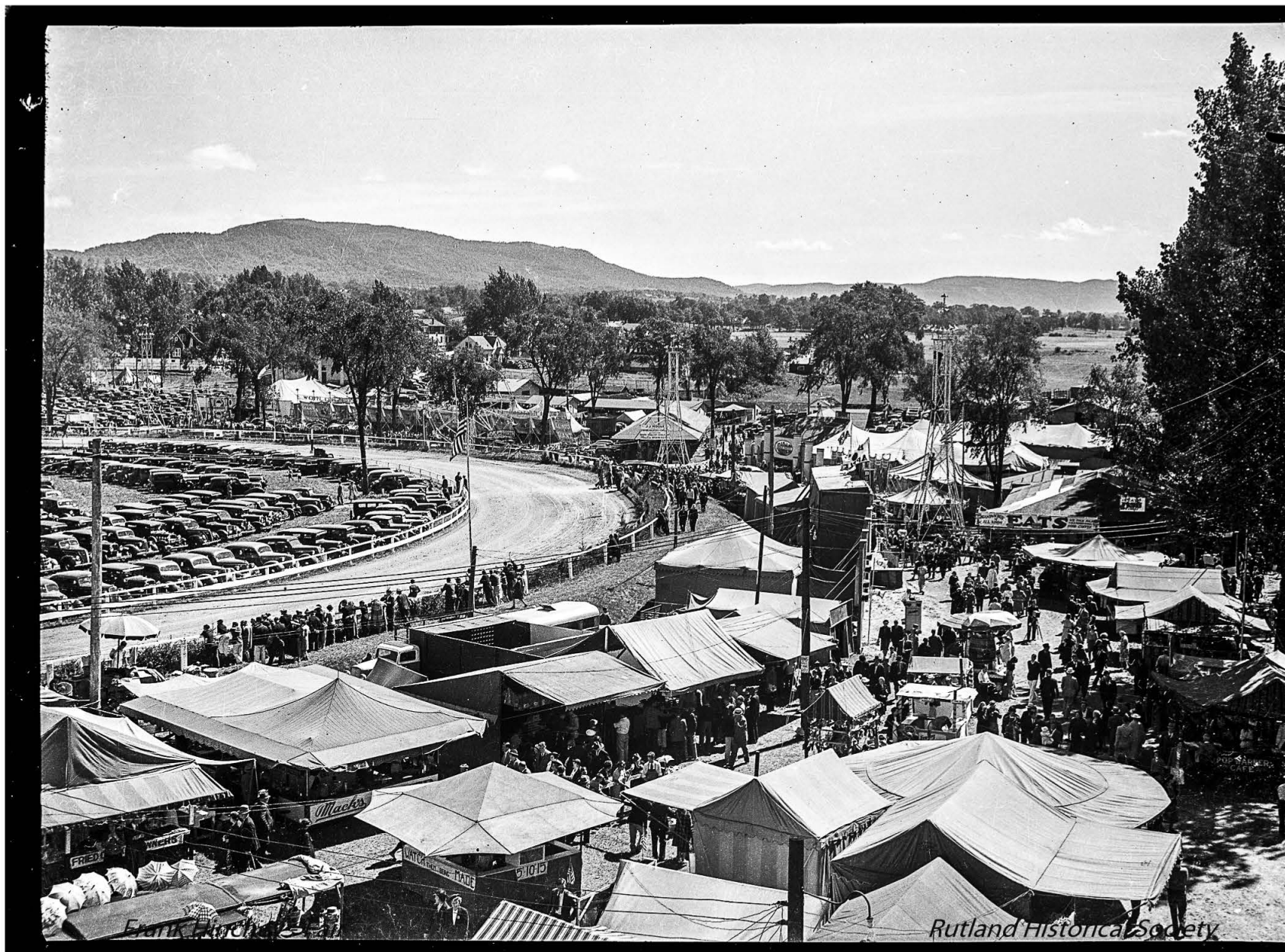


*Frank Hinchey - Fair*

*Rutland Historical Society*

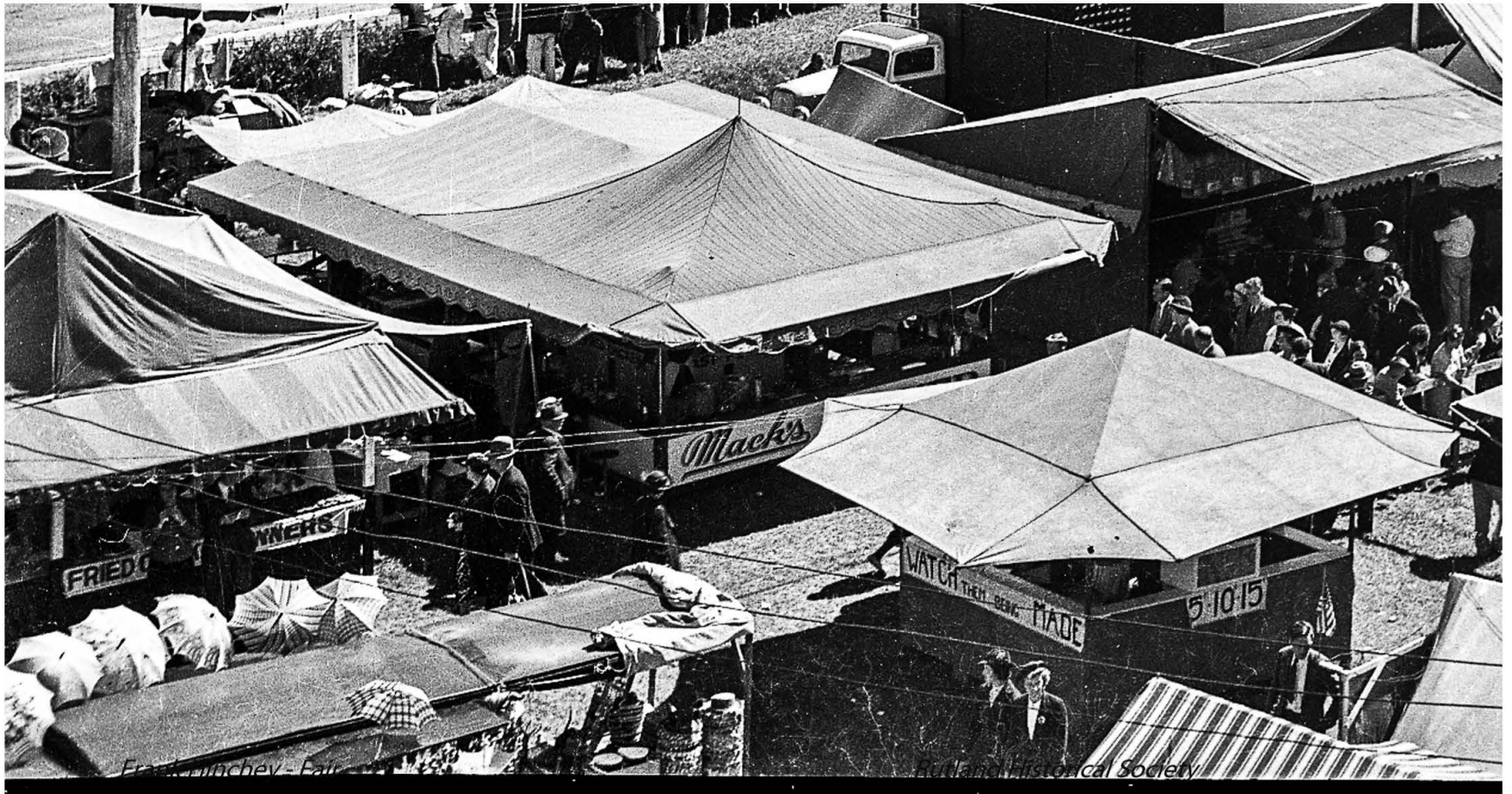
Overhead View with Mountains





Overhead View





Food Vendors





*Frank Hinchey Fair*

*Rutland Historical Society*

Shaded Area with Rides





World's Strangest and Children's Ride





World's Strangest





Honky Tonk and Thrill Show - Note Boy Peeking in





Frank Hinchey - Fair

and Historical Society

Fair Goers





Ethel Purtle's Thrill Show - with Women, Lions and Motorcycles





*Frank Hinchey - Fair*

*Rutland Historical Society*

Lemonade, New Paint Method, and Snazzy Socks on the Right





Frank Hinchey - Fair

Rutland Historical Society

Lemonade Stand - Rutland Lumber





*Frank Hinchey - Fair*

*Rutland Historical Society*

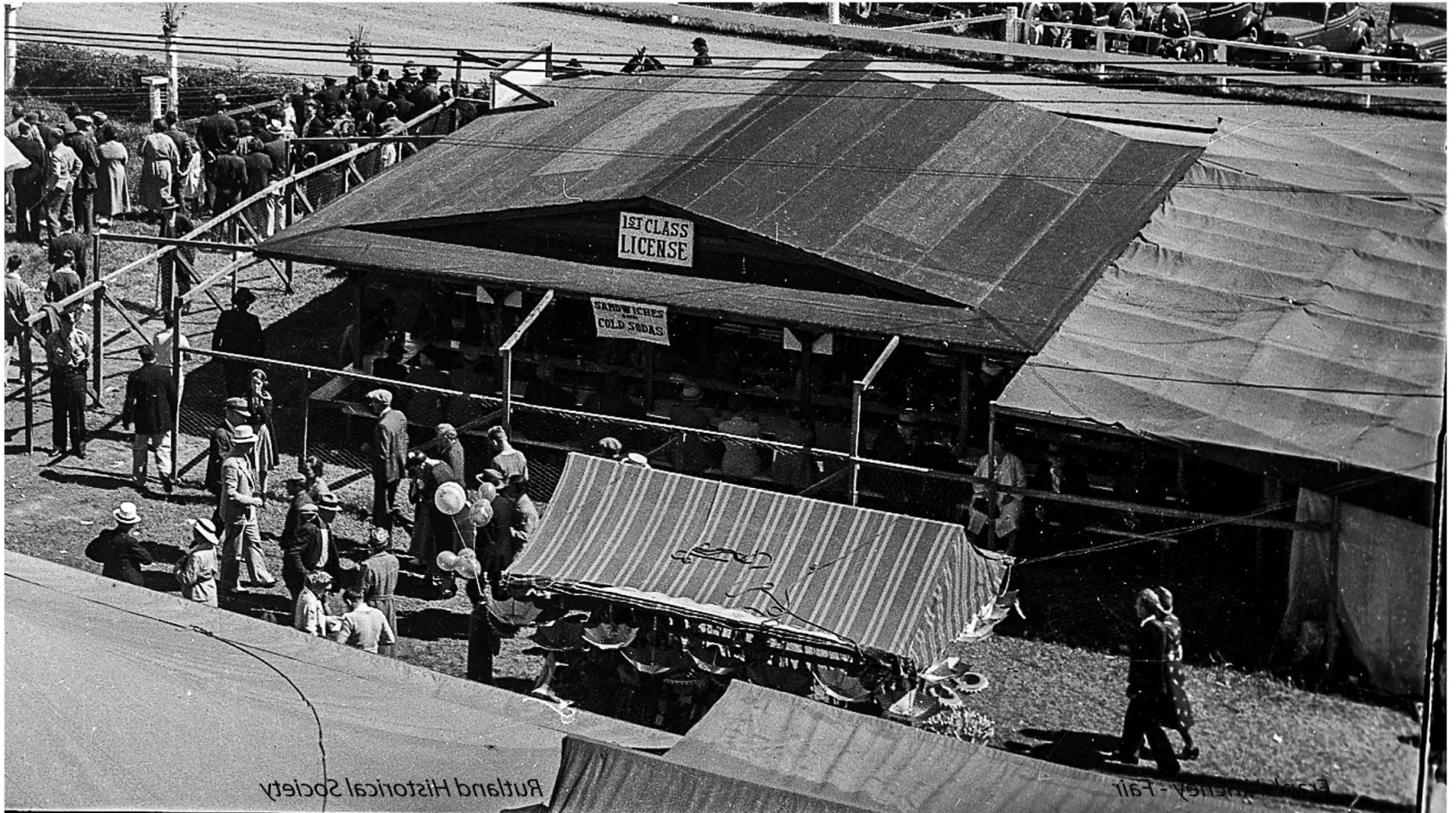
Paint with a Cloth





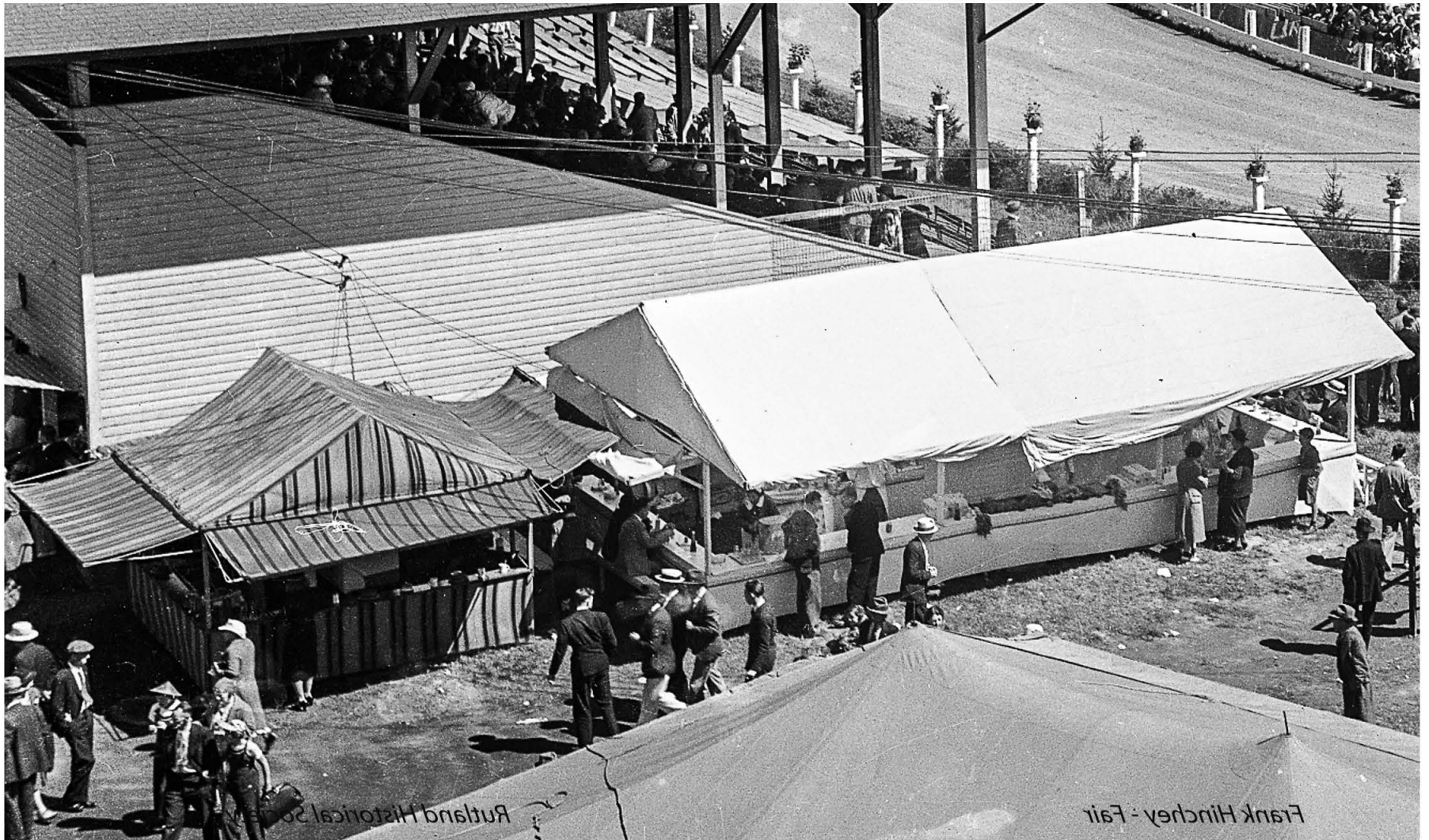
R. D. Barker Washed Sand & Crushed Stone





1st Class License for Sandwiches and Cold Sodas





More Food





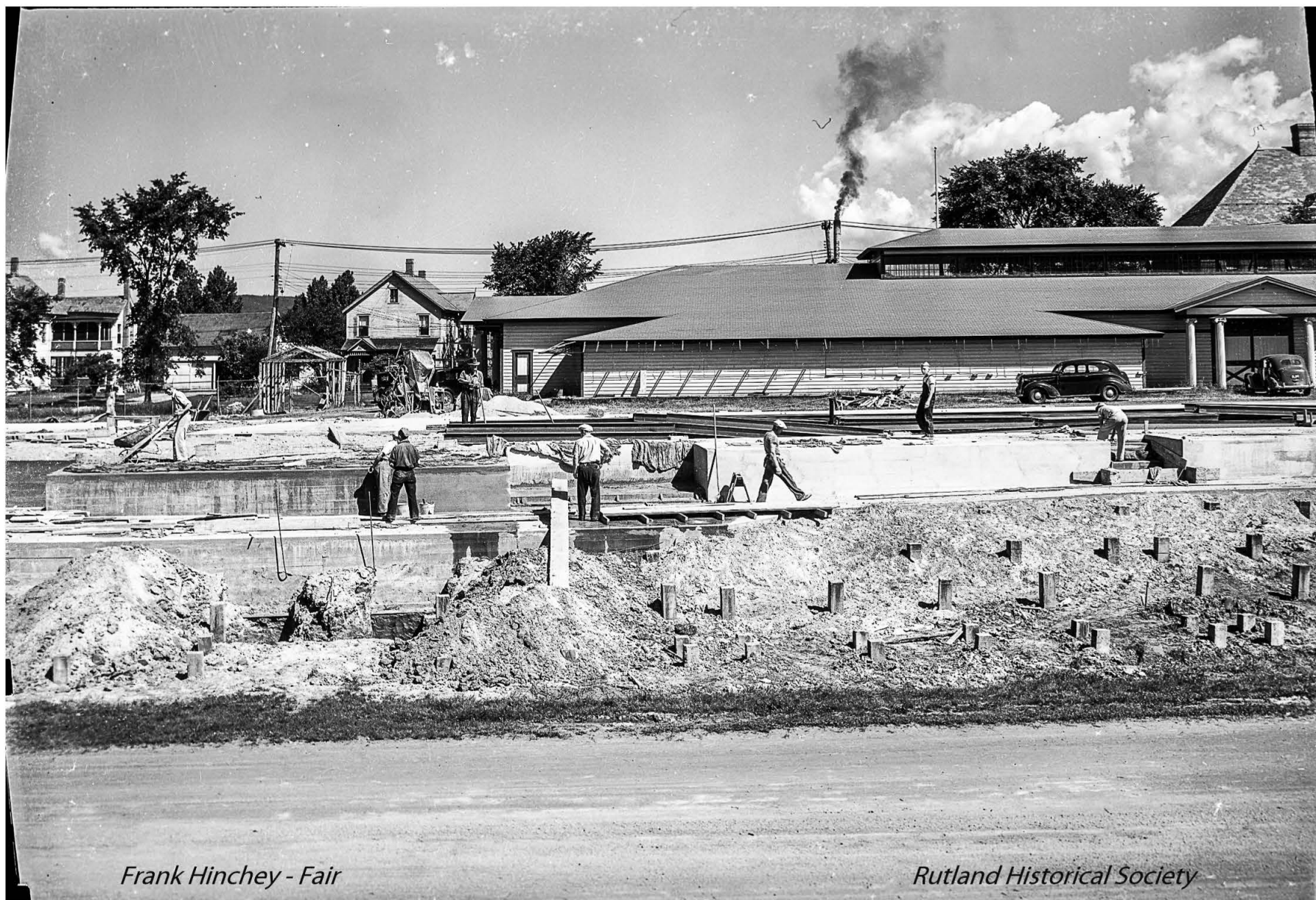
Trucks and Car





McCormick Deering; Man Reading Paper in Left Truck, Boy Standing by Truck





*Frank Hinchey - Fair*

*Rutland Historical Society*

Starting Work on the Grandstand after the 1939 Fire; Industrial Building and Park Street Houses in the Background





Starting Work on the Grandstand after the 1939 Fire - Closeup





*Frank Hinchey - Fair*

*Rutland Historical Society*

1939 Starting Work on the New Grandstand; Rutland Fibre Can Co. at 70 Park Street (Previously L & J A Steward Can Co.)





Rutland Fibre Can Co. at 70 Park Street (Previously L & J A Steward Can Co.)





*Frank Hinchey - Fair*

*Rutland Historical Society*

Grandstand Under Construction Summer of 1939 after the June Fire





Grandstand Under Construction - Closeup; Howe Smokestack in Background





*Frank Hinchey - Fair*

*Rutland Historical Society*

Working on the Front Bleachers





*Frank Hinchey - Fair*

*Rutland Historical Society*

Working on the Front Bleachers





Working on the Side Bleachers; The Arts & Crafts Building was Destroyed by Fire in 1970





Grandstand Under Construction





*Frank Hiney - Fair*

*Rutland Historical Society*

Grandstand Under Construction Final Touches





*Frank Hinchey - Fair*

*Rutland Historical Society*

Grandstand Under Construction Final Touches





*Frank Hinchey - Fair*

*Rutland Historical Society*

Grandstand Under Construction





*Frank Hinchey - Fair*

*Rutland Historical Society*

Grandstand Complete; Carl W. Olney - Fair Secretary on the Right





*Frank Hinchey - Fair*

*Rutland Historical Society*

King Reid (Reid LeFevre) Shows and Early 1950s Cars





King Reid (Reid LeFevre) Shows and Early 1950s Cars



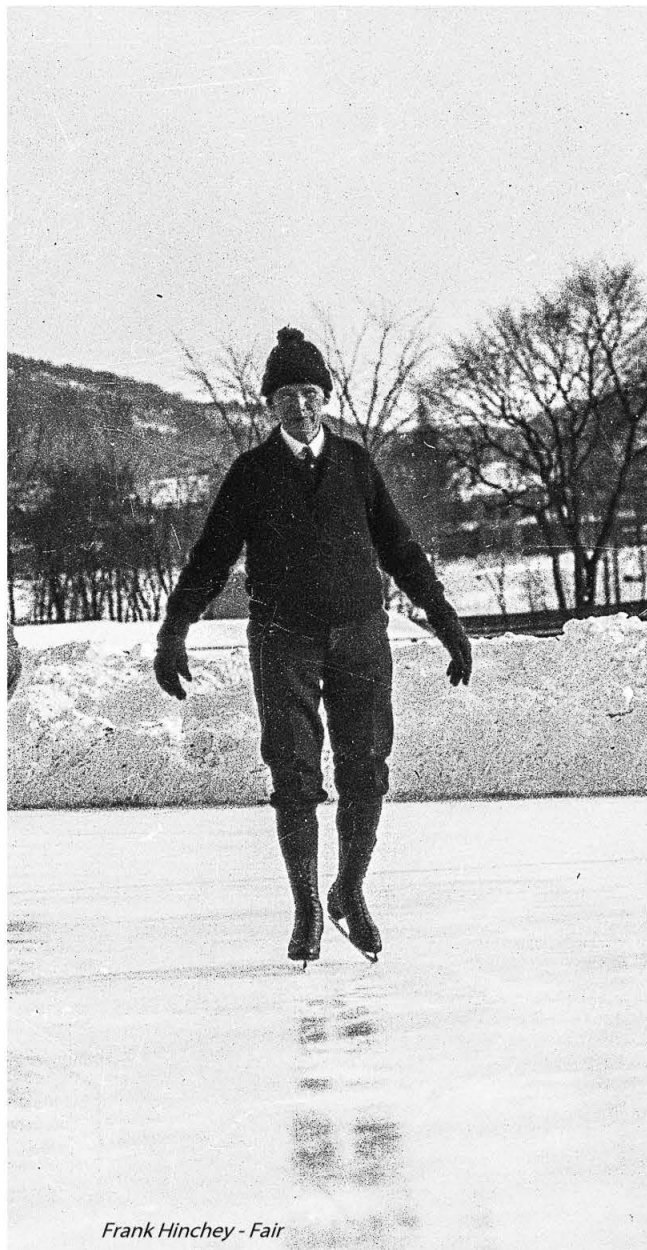


*Frank Hinchey - Fair*

*Rt*

Keeping Warm

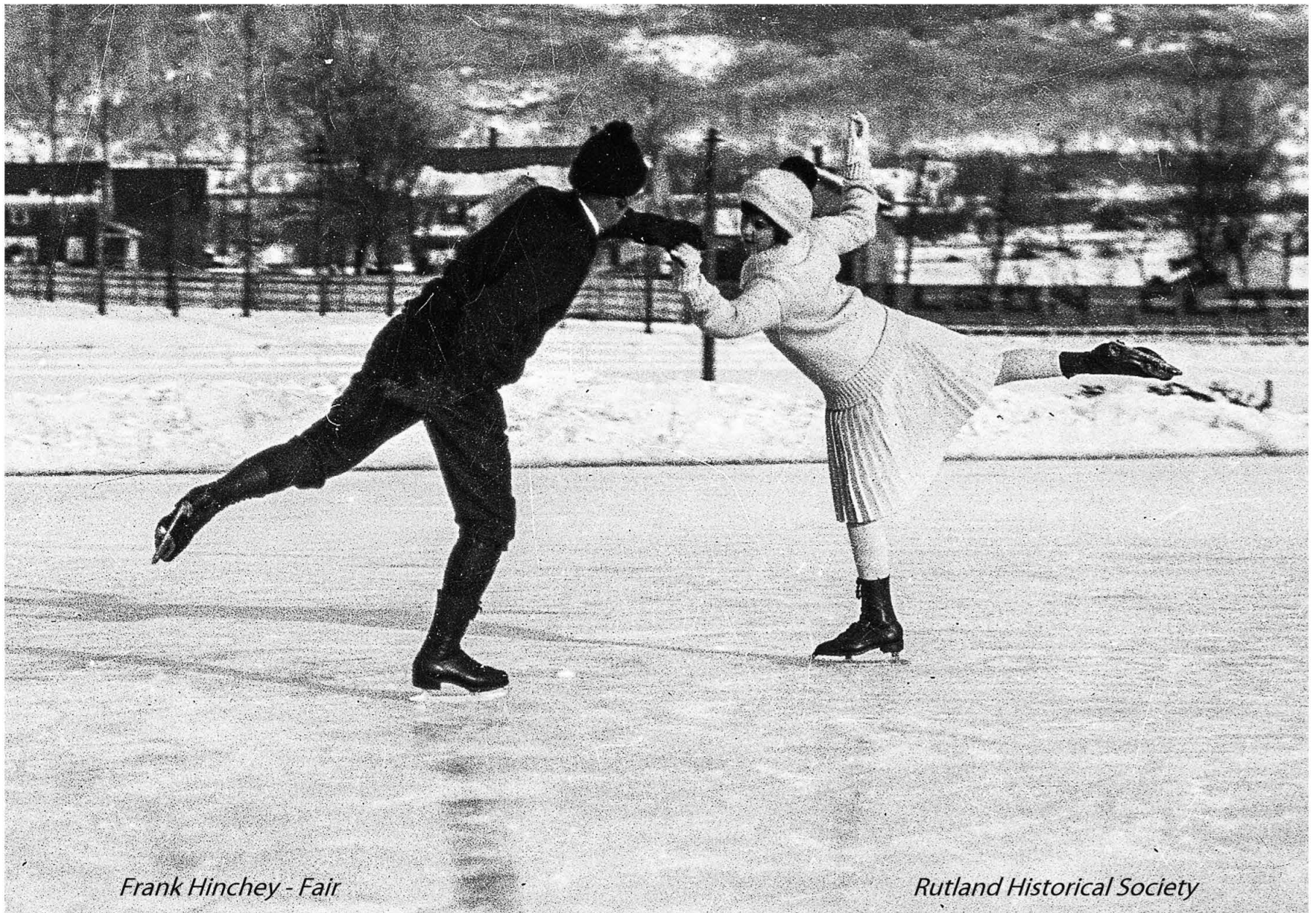




*Frank Hinchey - Fair*

Skating Solo





*Frank Hinchey - Fair*

*Rutland Historical Society*

Skating Duo

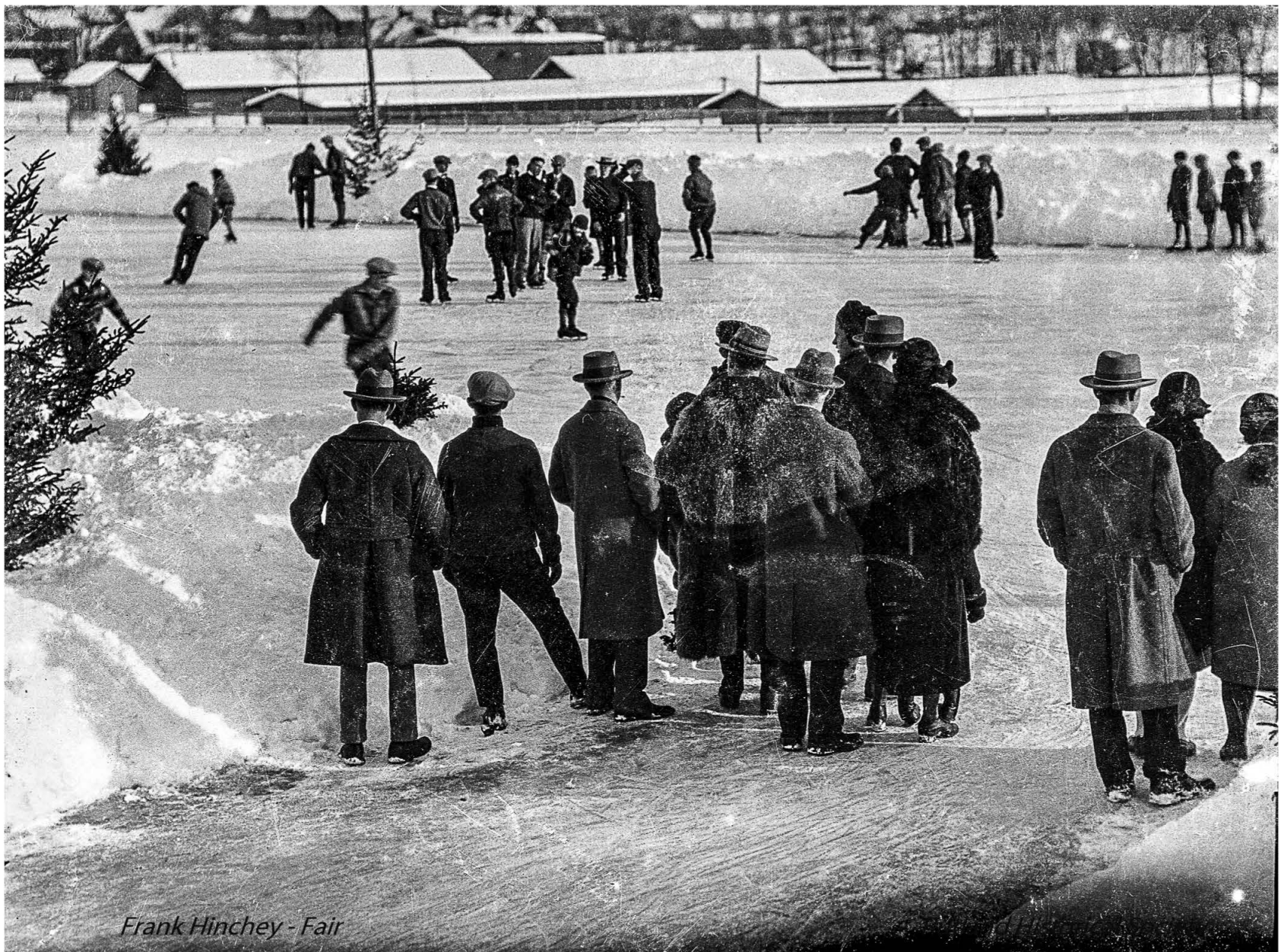




*Frank Hincley - Fair*

Skating Solo

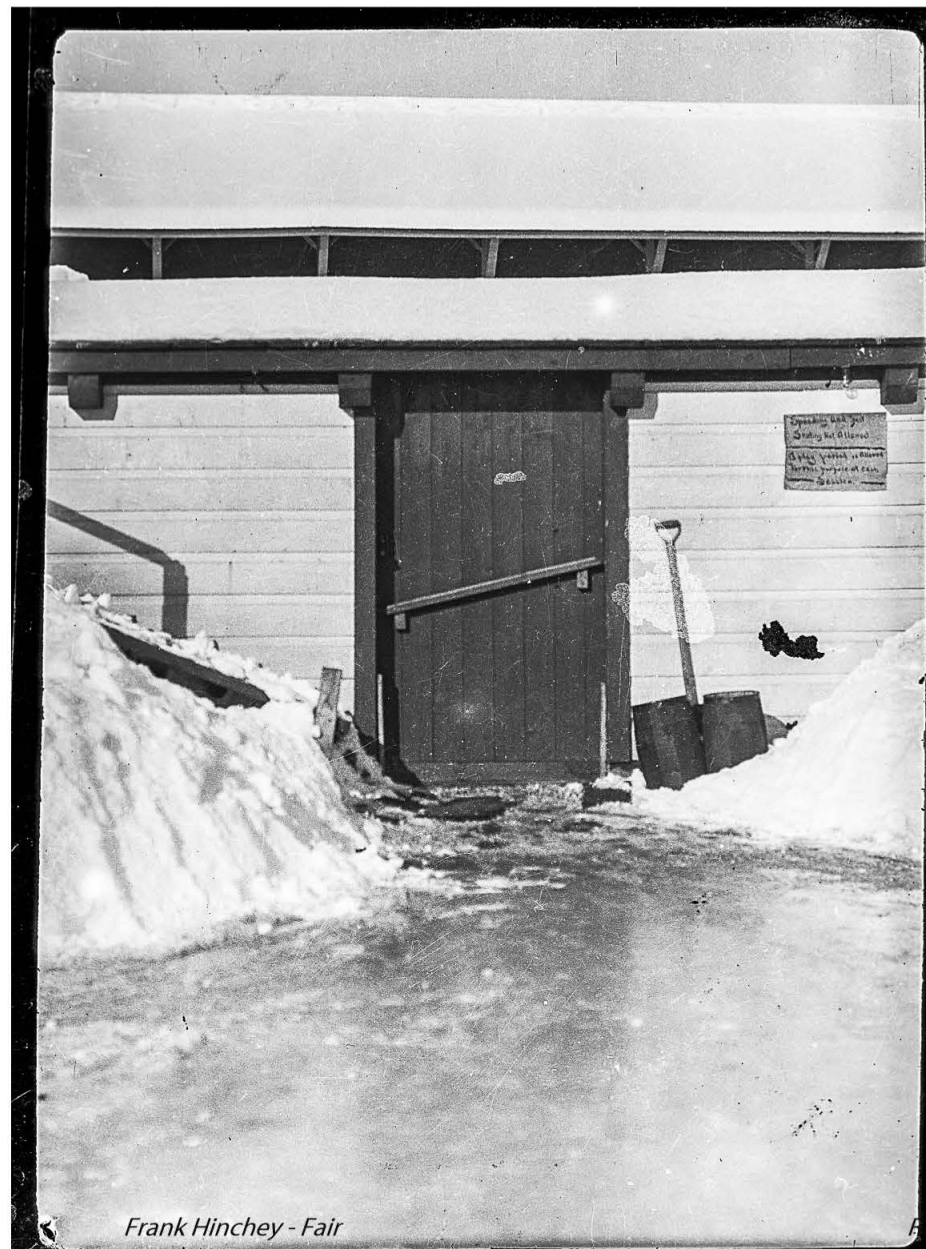




*Frank Hinchey - Fair*

Skaters and Onlookers

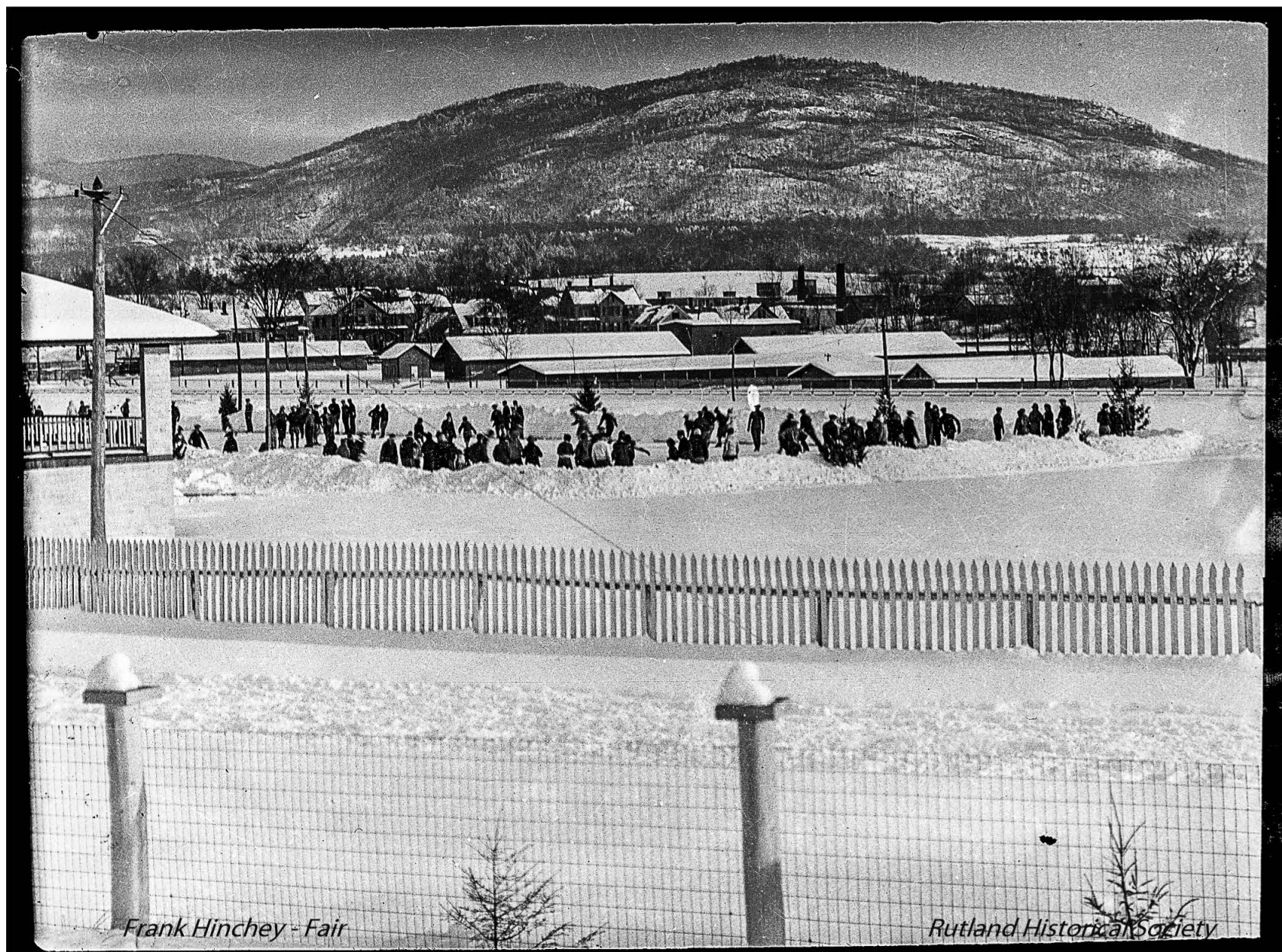




Frank Hinchey - Fair

Work Area



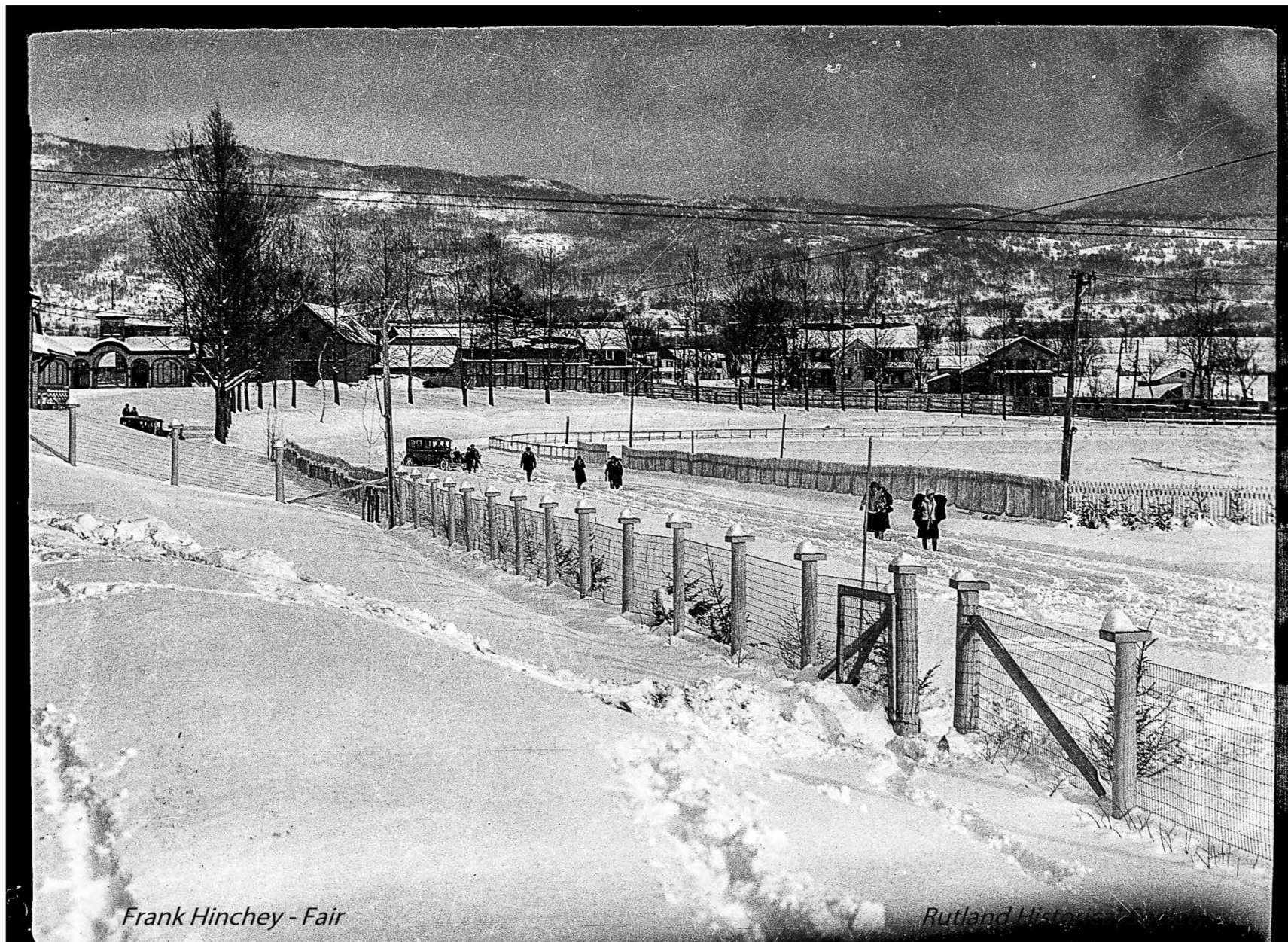


*Frank Hinchey - Fair*

*Rutland Historical Society*

Skaters with Mountain Background; Reviewing Stand on the Left



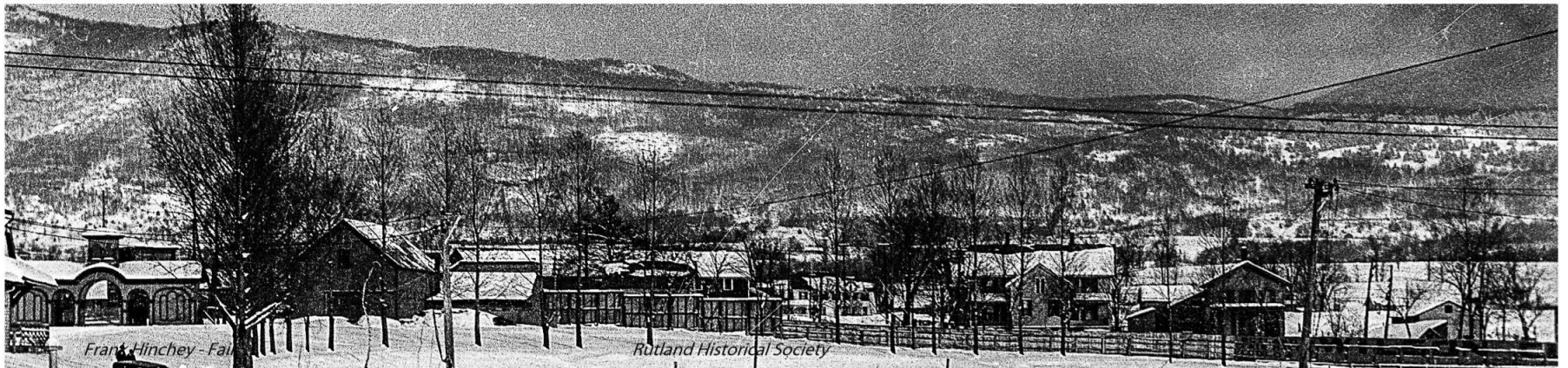


*Frank Hinchey - Fair*

*Rutland History*

Facing Main Street





Facing Main Street - Entrance and Houses





*Frank Hinchey - Fair*

*Rutland Historical Society*

Trekking Through the Snow at the Fairgrounds



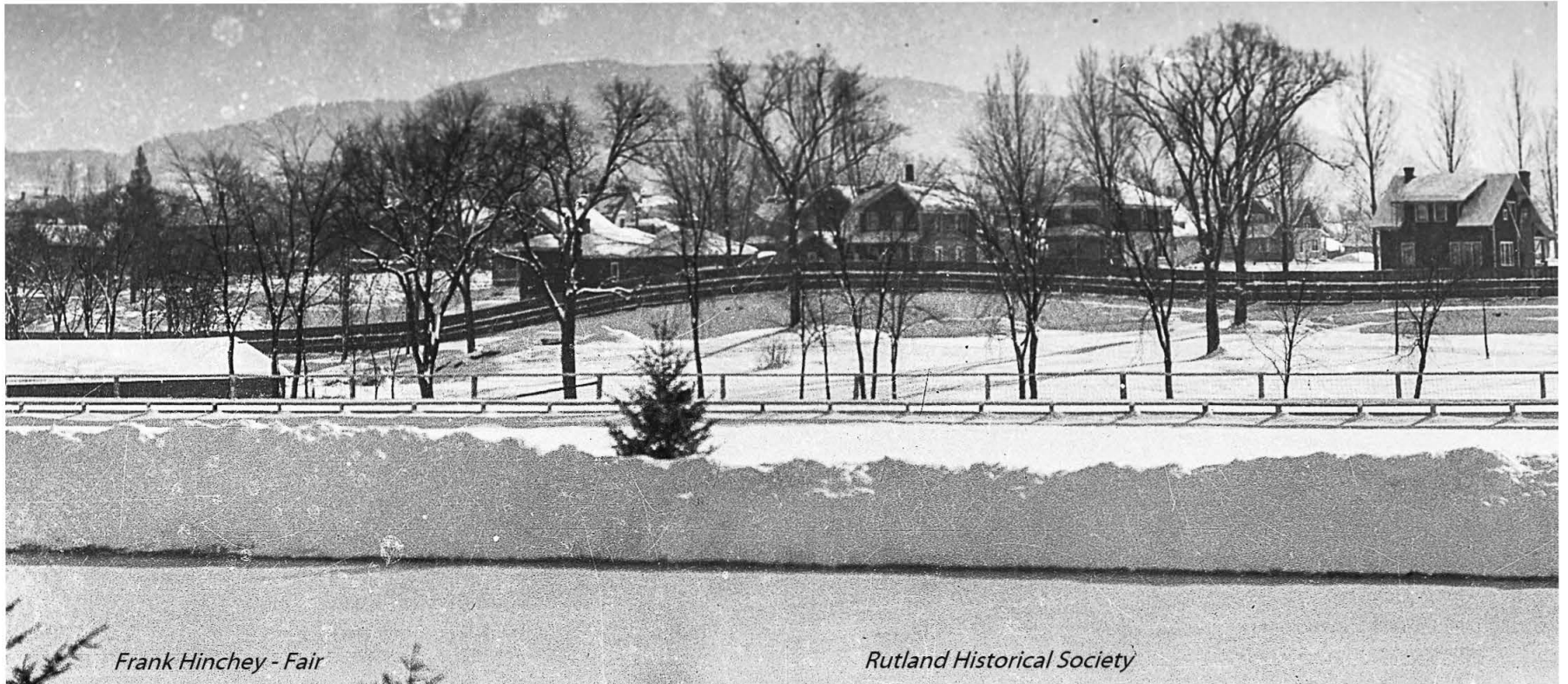


*Frank Hinchey - Fair*

*Rutland Historical Society*

Looking South to Dana Street





Looking South to Dana Street - Closeup