

RUTLAND

1947

FLOOD

PHOTOS

SUMMARY OF WORK BY THE FIRE DEPARTMENT AFTER THE FLOOD

When we received word that East Pittsford dam had broken at 8:15 P.M. June 3 all of the "Off" shift were called to fire headquarters and all members of the Fire Department were on continuous duty until June 19, when the regular working schedule was resumed.

As the flood crippled the entire water system a very serious fire hazard condition was created. When we realized on June 4 that the water system would be out of service for several days, we started emergency calls for heavy pumping equipment.

Engine 1 was put in service pumping from the Eddy pond on Curtis Ave. at 7:45 June 4. Engine 2 started pumping from Tenny brook near the swimming pool at 8:00 A.M.

Old Engine 2 was put in service pumping from Tenny brook on North St. There were so many leaks in the water mains in the flood district that little progress was made in keeping the mains full. Members of the water department and volunteers shut off as many of the broken pipes as could be found and on June 5 we had 20 lbs. pressure on Merchants Row.

We received 3,000 ft. of hose and two 600 G.P.M. auxiliary pumps from the Arlington, Mass. Fire Department at 7:30 A.M. June 5 and one was put in service at the swimming pool, releasing Engine 2 and one was sent to the Eddy pond to release Engine 1. Both of these pumps had pumped steady for 28 hours.

Three army fire trucks arrived at 7:30 P.M. from the Watervliet Arsenal with 6 firemen and two more army fire trucks arrived at 9:00 P.M. from Camp Bevens.

Old Engine 2 broke down at 6:30 A.M. June 6. This truck was never repaired as it is impossible to get motor parts and a replacement pump would cost too much.

One army truck started pumping from Tenny brook on Grove Street and another from Tenny brook on Baxter Street.

We received two auxiliary pumps from the Burlington Fire Department and these were set up on Moon brook on Killington Ave. and from Tenny brook on Adams Street. We also received an auxiliary pump from the Windsor Fire Department.

On June 7 we received 12 Auxiliary pumpers from the army supply base at Schenectady. The army trucks were released and these pumps were put in service. We were pumping approximately 1,500,000 gallons of water per day into the water mains and also to keep tanks full.

Members of the fire department and some volunteers kept 12 pumps going 24 hours per day and by June 8 we had 85 lbs. pressure in the water mains.

On June 12 Engine 4 and 4 Auxiliary pumps were taken to Mendon and started pumping into the 12" water main. This released some of the pumpers from the brooks around the city. Engine 4 pumped at Mendon from June 13 to June 25.

Engine 4 is still in service as a reserve pumper. The pump is in very poor condition and will deliver about one half of its rated capacity.

Parts for the motor were taken from Old Engine 2 but the motor is still in poor condition.

While our greatest problem was to keep water in the system, the members of the fire department were called upon for several other emergency duties, which were willingly performed by everyone connected with the Fire Department.

THE AMERICAN RED CROSS



RUTLAND COUNTY CHAPTER

37½ Merchants Row
Rutland, Vermont

March 7, 1949

Mr. Guiseppe Coladonato
52 Center St.
Rutland,
Vermont

My dear Mr. Coladonato,

We are glad to inform you that the sum spent by the National Red Cross for the relief of suffering as a result of the "Central Vermont" floods of 1947 was \$441,150.19.

Very truly yours,

Earl S. Wright
Chairman
Rutland County Chapter
American Red Cross

EW/dbb

June 2, 1947

The city of Rutland was on the air. The people were being warned of the danger from the high water. The following day Governor Gibson came to Rutland to investigate conditions. After a thorough investigation he immediately made arrangements to have the city equipped with everything needed; State guards, tanks, and all machinery to ease conditions.

The people were very grateful to Governor Gibson for his kindness and thoughtfulness in their behalf.



Rutland Historical Society

Governor Gibson Visit after Flood



June, 1947, a view of Chittenden Dam.

Rutland Historical Society

June, 1947: a view of Chittenden Dam



A make-shift bridge constructed
in Slab City (Chittenden) on June 3, 1947.

Rutland Historical Society

A make-shift bridge constructed in Slab City (Chittenden) on June 3, 1947.



Another view of the same Penstock
in June, 1948 after the C.V. had
completed another job. (Cost: \$10,000)

Rutland Historical Society

Another view of the same Penstock in June, 1948 after the C.V. had completed another job. (Cost:\$10,000)



A front view of Chittenden Dam.
June, 1947.

Rutland Historical Society

A front view of Chittenden Dam. June, 1947



The same view in June, 1948, after the
Central Vermont Public Service Corporation
had done a bit of remodeling.

Rutland Historical Society

The same view in June, 1948 after remodeling.



The Penstock, three-quarters of a mile from Chittenden Dam. (June, 1947)

Rutland Historical Society

The Penstock, three-quarters of a mile from Chittenden Dam. (June, 1947)



The C.V. still busy at work re-
modeled the Penstock view by June
1948. (Cost: \$20,000)

Rutland Historical Society

The Penstock remodeled. June, 1948



One-tenth of a mile from Chittenden
dam. (The penstock) June, 1947.

Rutland Historical Society

One-tenth of a mile from Chittenden Dam (The Penstock) June, 1947



A front view of Chittenden Dam
in June, 1948. The C.V. remodeled
this view at the cost of \$250,000.

Rutland Historical Society

Front view of Chittenden Dam. June, 1948 (\$250,000)



This covered bridge was built in 1785 and is still standing. It was constructed entirely of wood and is held together with wooden pegs. We should learn a lesson from this bridge. The men who put it together had very little schooling and less of the tools which we have today. Yet, with what they had, they built a structure that is enduring.

Let us hope that in the future, those who build, build not to see who can construct the fastest, but to see how permanent their works will be.

Rutland Historical Society

Mead Bridge built in 1785.



The Memorial Armory. It was here
that better than 40% of those families
stricken by the flood found refuge.

Rutland Historical Society

40% of the families stricken by the flood took refuge at the Memorial Armory.



Corner Convent Avenue and Meadow
Street. June 3, 1947.

Rutland Historical Society

Corner Convent Avenue and Meadow Street. June 3, 1947



Baxter Street. (June, 1947)

Rutland Historical Society

Baxter Street. June, 1947



A view from Mendon. (June, 1947)

Rutland Historical Society

A view from Mendon. June, 1947



The corner of Baxter and State Streets.
(After the flood.)

Rutland Historical Society

Corner of Baxter and State Streets after flood.



Rutland Historical Society

The corner of Baxter and State Streets.
(Before the flood.)

Corner of Baxter and State Streets before flood.



Noyes Avenue. June 3, 1947.

Robbins

Rutland Historical Society

Noyes Avenue. June 3, 1947



Standing on Baxter Street looking East.

Rutland Historical Society

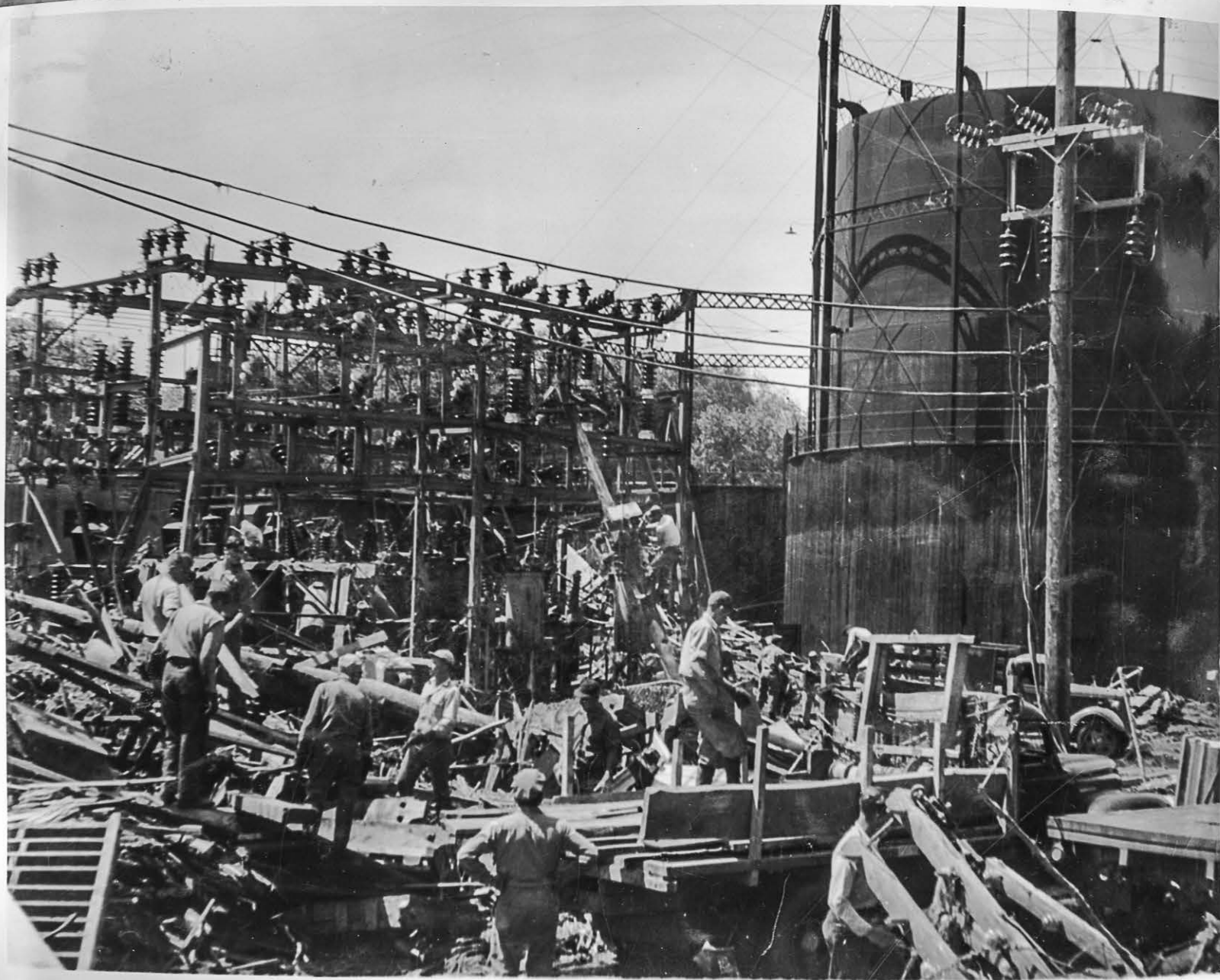
On Baxter Street looking east.



The corners of Pine and Library Streets.
(June, 1947.)

Rutland Historical Society

Corners of Pine and Library Streets. June, 1947



The Gas Works. Crews were hard at work
a few hours after the water had receded.
(June 3, 1947)

Rutland Historical Society

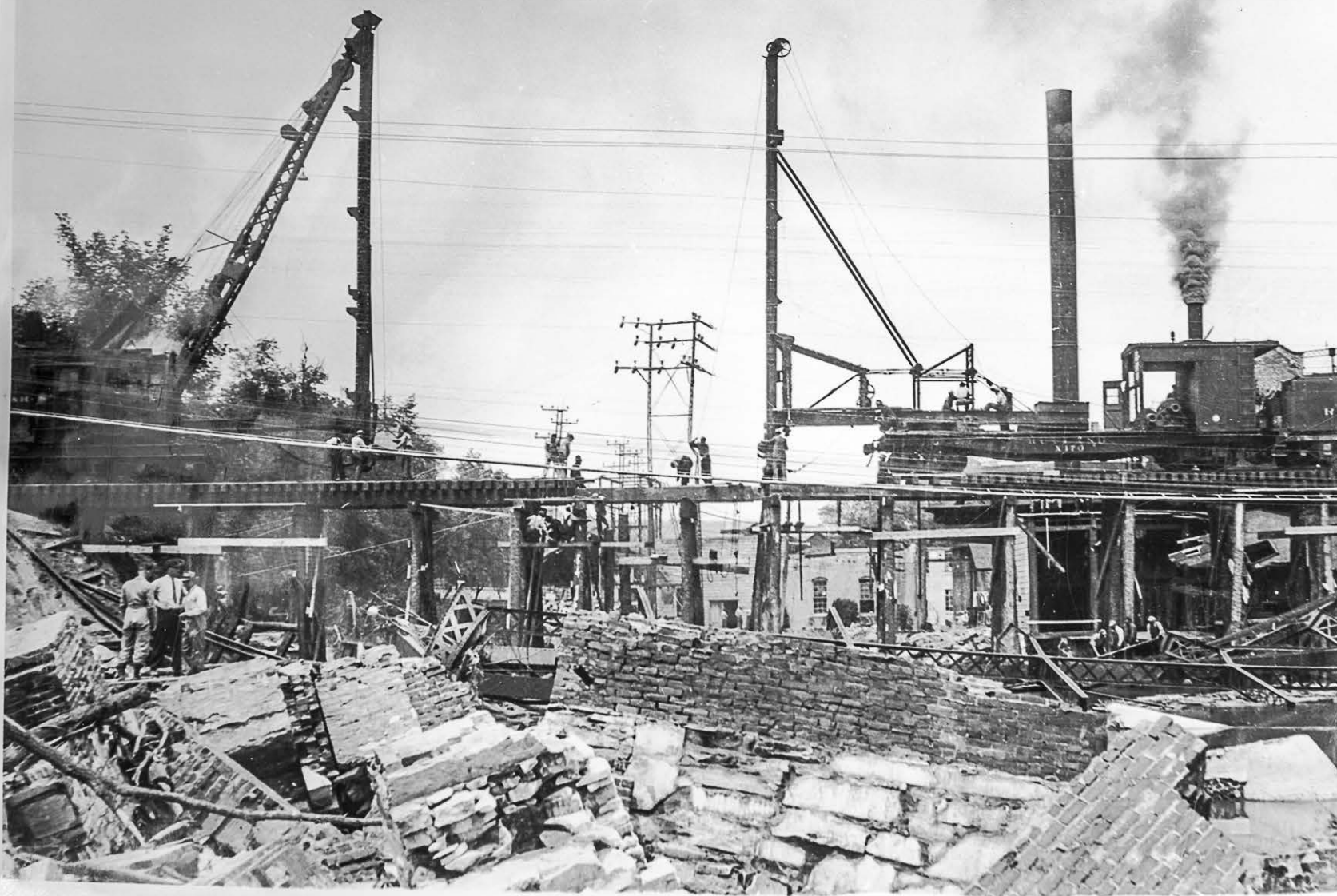
The Gas Works – crews at work.



Mill Village. June 3, 1947.

Rutland Historical Society

Mill Village. June 3, 1947



Rutland Historical Society

The temporary railroad bridge under construction a few days after the flood.

Temporary railroad bridge under construction a few days after the flood.



Meadow Street. The men shown were
on guard duty.

Rutland Historical Society

Guard duty on Meadow Street.



West Street. The aftermath of the flood.

Rutland Historical Society

West Street aftermath of flood.



State Street as the trouble started.
(Evening June 2, 1947.)

Rutland Historical Society

State Street evening of June 2, 1947.



Water Street. This house was lifted
off its foundation and deposited on the bank
of the Otter Creek.

Rutland Historical Society

Water Street. This house was lifted off its foundation and deposited on the bank of Otter Creek.



Another house torn asunder and thrown
across a road.

Rutland Historical Society

Another house tossed across a road.



The mess in the city; 1947.

Rutland Historical Society

1947



Not a scene showing bomb destruction in devastated Berlin, but a picture of a home in Rutland following the 1947 flood.

Rutland Historical Society

Destruction of home in 1947 flood.



Water Street. These houses, were a total loss and were torn down and the lumber used to build new homes in some cases.

Rutland Historical Society

Water Street homes were a total loss.



Another view of the Gas Plant.

Rutland Historical Society

The Gas Plant.



The Gas Plant. One tank is missing and all kinds of debris covered the area. The missing tank was found one-quarter of a mile away.

Rutland Historical Society

The Gas Plant. The missing tank was found one-quarter of a mile away.



A house sits in the road next to another house that has been declared unsafe due to the work of the flood.

Rutland Historical Society

House in the middle of the road.



Water Street, June,

Rutland Historical Society

Water Street June 1947



The roof from some building was deposited in this yard. The mystery is, where is the building?

Rutland Historical Society

Roof of unknown house deposited in front yard.



A scene of destruction, June, 1947.

Rutland Historical Society

More destruction. June, 1947



If it weren't for the large trees in the picture above there is no telling where the houses leaning up against them would have drifted to.

Rutland Historical Society

Large trees kept this house from drifting off.



Library Avenue looking West, June, 1947.

Rutland Historical Society

Library Avenue looking west. June, 1947.



Rutland Historical Society The destruction was sometimes worse
than in another.

Destruction worse in some areas.



In the city. One can see for himself
the damage done.

Rutland Historical Society

Damage in Rutland City



Bull-dozers, steam shovels and trucks
were all used to help clean up the mud.

Rutland Historical Society

Cleaning up the mud with heavy duty equipment.



Another picture showing the destructive
force of the "Mad Dog" that attacked
Rutland.

Rutland Historical Society

More destruction. June, 1947



There was over three feet of mud left
on Rutland Streets after the water had
receded. June, 1947.

Rutland Historical Society

3 feet of mud in Rutland Streets. June, 1947



Cleveland Avenue, June, 1947.

Rutland Historical Society

Cleveland Avenue. June, 1947.



Some of the men who worked at
cleaning up. (Library Avenue)

Rutland Historical Society

Cleanup crew on Library Avenue.



Robbins Street. June, 1947.

Maple Street, June, 1947.

Rutland Historical Society

Maple Street. June, 1947



Meadow Street one year later.

Rutland Historical Society

Meadow Street, 1948.



Meadow Street, June 3, 1947.

Rutland Historical Society

Meadow Street, June 3, 1947



The Modern Linen Building located at
the corners of Park and Cleveland Avenues.
(June, 1947)

Rutland Historical Society

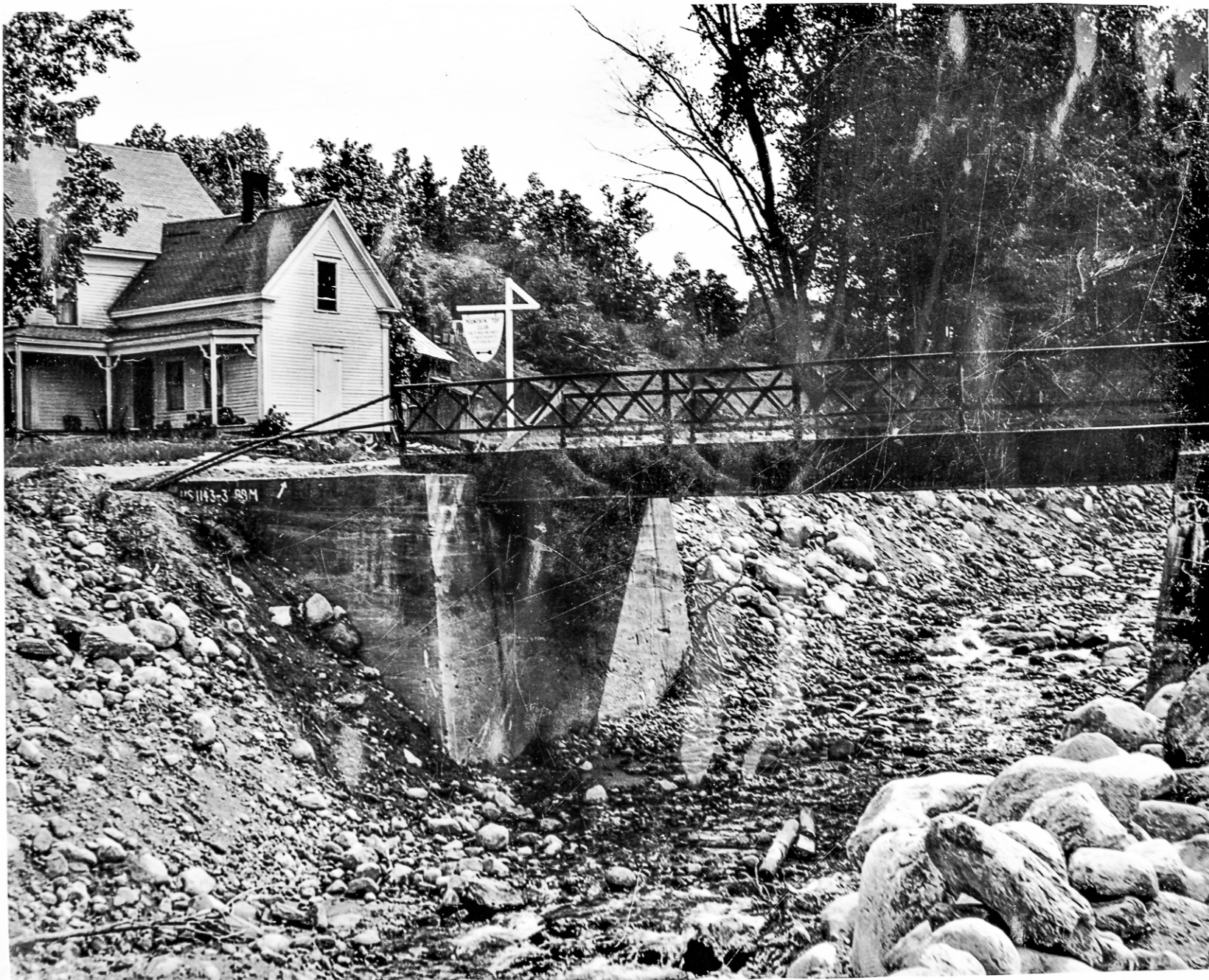
Modern Linen Company on the corner of Park and Cleveland Avenues. June, 1947



The same building one year later.

Rutland Historical Society

Modern Linen Company on the corner of Park and Cleveland Avenues. June, 1948



The same scene in June, 1948.

June, 1948

Rutland Historical Society



A scene from Slab City. The loss to the town was \$100,000.

Rutland Historical Society

Slab City. Loss was \$100,000.



A building built by the power corporation in 1914. Utilizes the power generated by the water from Chittenden Dam.

Rutland Historical Society

Power Station built 1914, which utilizes power generated by water from the Chittenden Dam.



A view of East Pittsford Pond, looking
South, June, 1947.

Rutland Historical Society

East Pittsford Pond looking south. June, 1947



A view of East Pittsford Dam, looking
West, June 1947.

Rutland Historical Society

East Pittsford Dam looking west. June, 1947



The road to East Pittsford.
(June, 1947)

Rutland Historical Society

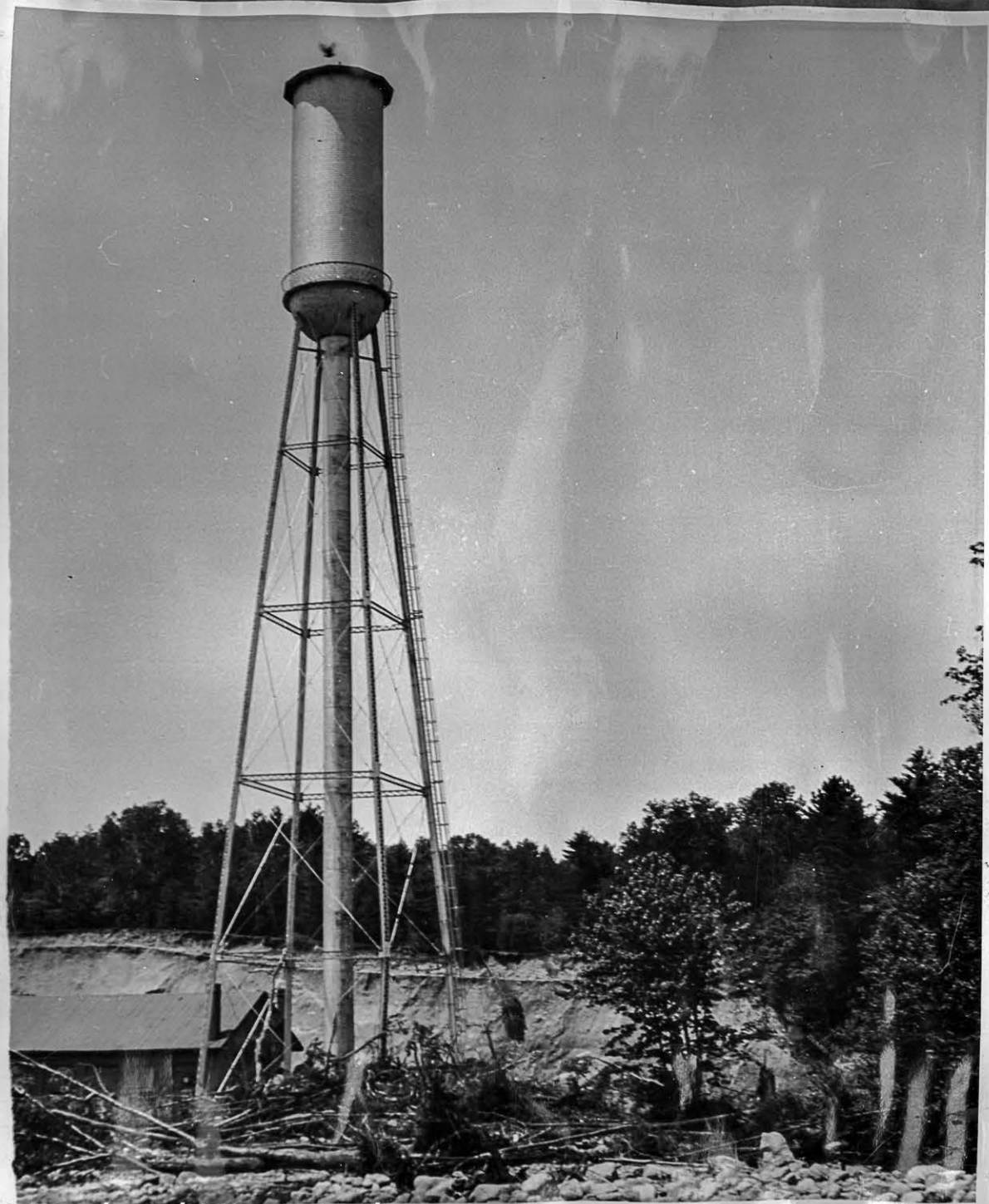
Road to East Pittsford. June, 1947



The road as it looks rebuilt at the cost
of \$105,000. (June, 1948.)

Rutland Historical Society

Road to East Pittsford rebuilt (\$105,000). June, 1948



The tower at East Pittsford Dam.
June, 1947

Rutland Historical Society

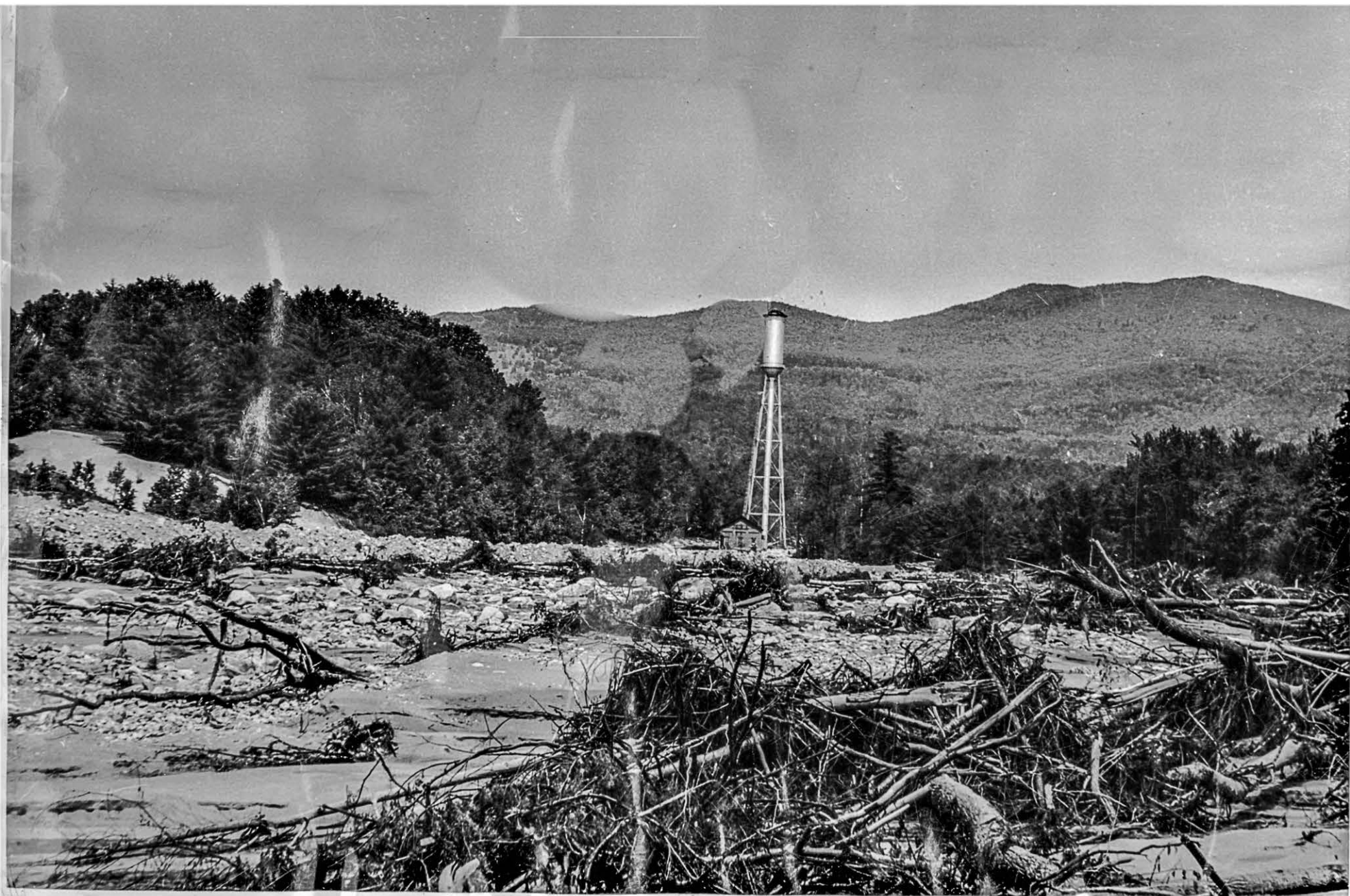
Tower at East Pittsford Dam. June 1947



The power station that was at use at East Pittsford Pond. The cost of replacing this station would be \$1,500,000.

Rutland Historical Society

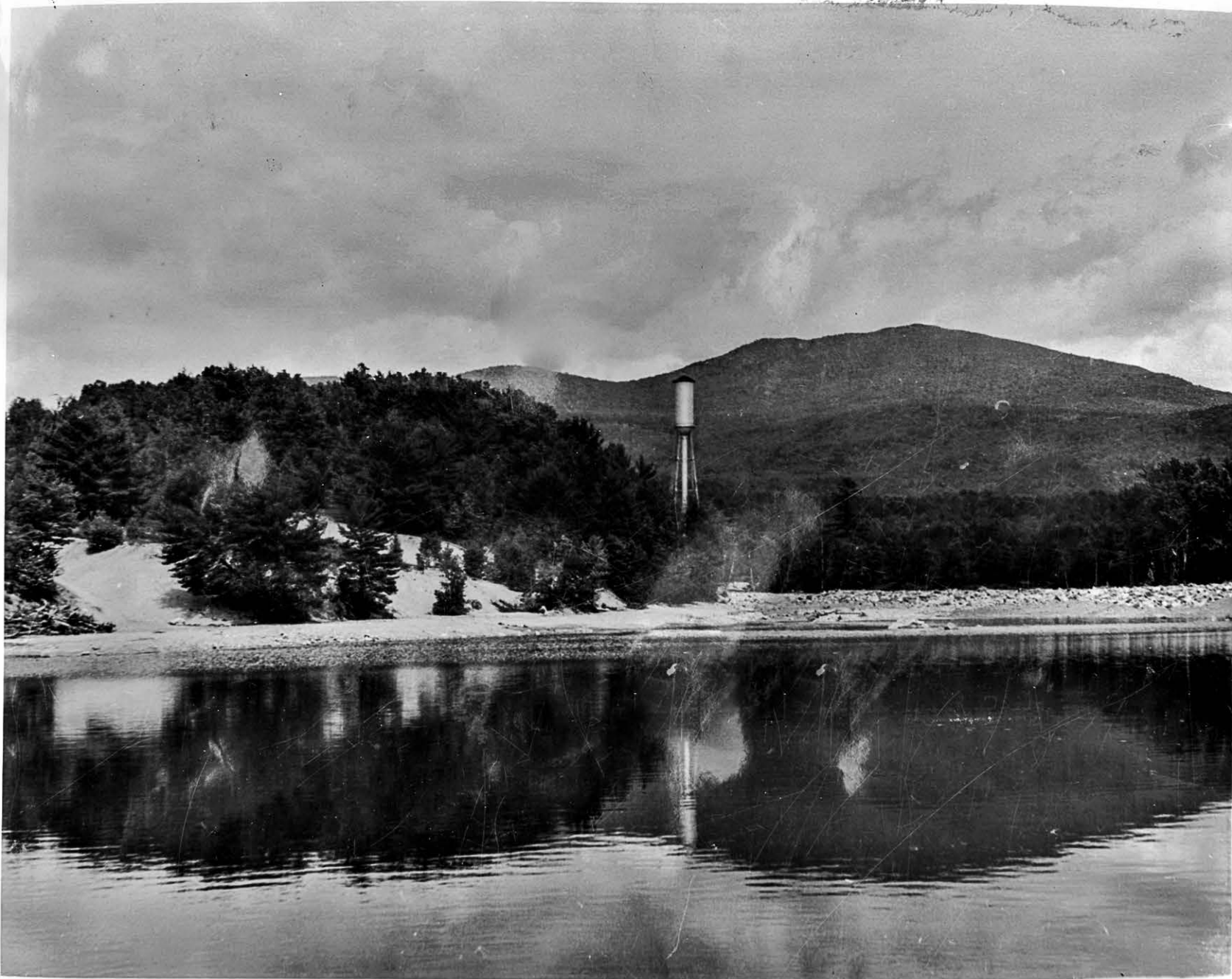
Power Station at East Pittsford Pond. Replacement would be \$1,500,000.



A view of Glen Dam, June, 1947.

Rutland Historical Society

Glen Dam. June, 1947



Rutland Historical Society The same view remodeled by the C.V.
by June, 1948.

Glen Dam. June, 1948



Front view of Glen Dam. The equipment
had begun to arrive and repairs had started,

Rutland Historical Society

Starting repairs at Glen Dam.



A view of the city reservoir. It is a complete loss along with 720 feet of pipe. Total damage here was around 50,000 dollars.

Rutland Historical Society

The city reservoir – a total loss.



June, 1947, the spillway at Glen Dam.

Rutland Historical Society

Spillway at Glen Dam. June, 1947



The same view a year later after the
Central Vermont had repaired the dam
the penstock and appurtenances.
(Cost: \$300,000)

Rutland Historical Society

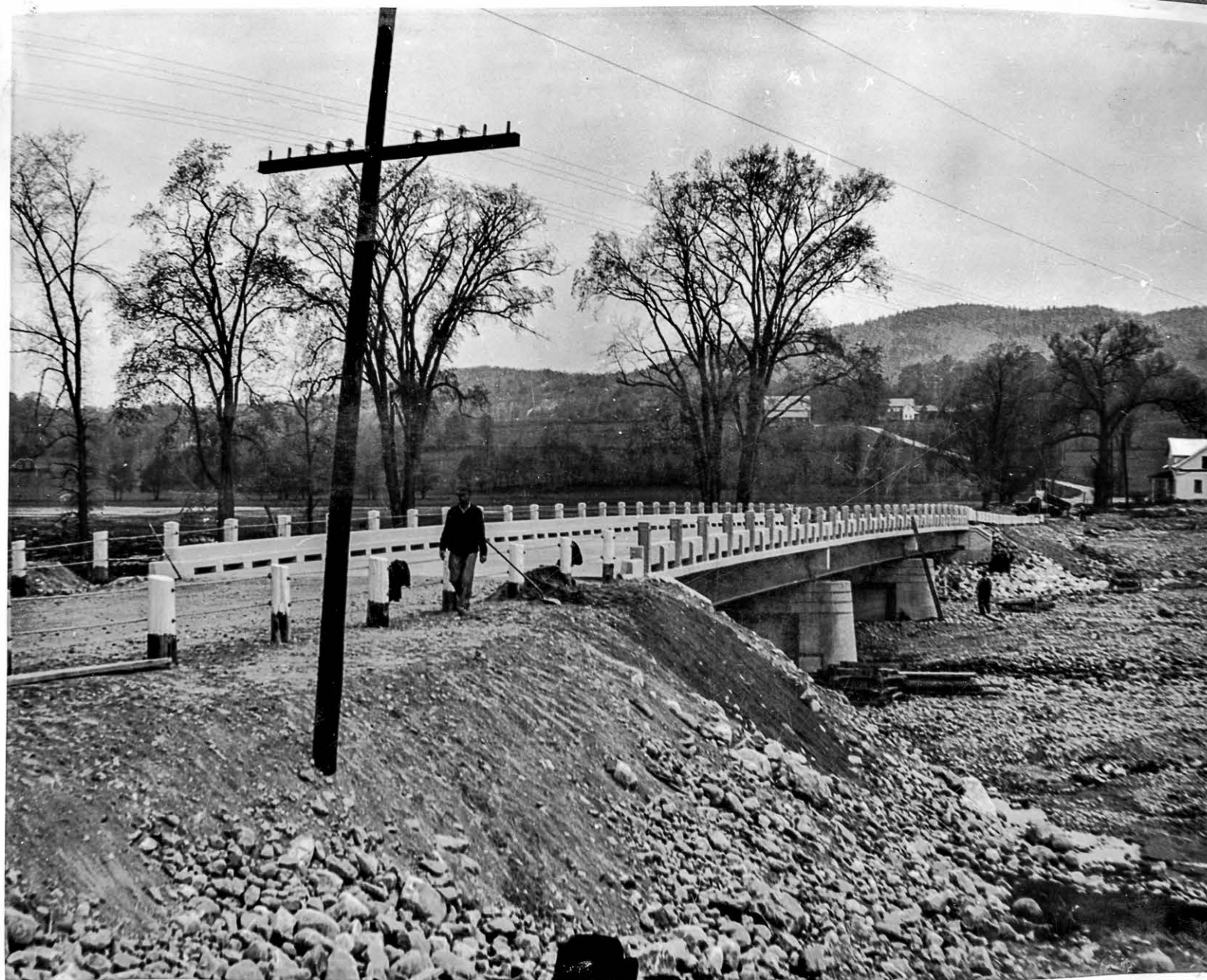
Spillway at Glen Dam repaired. 1948



Twin Bridges built in 1849 without the use of machinery. Washed out in 1947 by high water. It was ninety-eight years old.

Rutland Historical Society

Twin Bridges built in 1849. Washed out by 1947 flood.



The modern structure which now replaces the Twin Bridges. Completed in May, 1949 with the help of the most modern machinery at man's disposal. (Cost: \$75,000)

Rutland Historical Society

Bridge that replaced Twin Bridges.



The Twin Bridge road as it looked
in June, 1947.

Rutland Historical Society

Twin Bridges Road, June 1947.



A farm located near the Twin Bridges
which suffered a loss of \$15,000.

Rutland Historical Society

Farm near location of Twin Bridges.



The Lester Farm on Route 7. Front view
of house, looking East.

Rutland Historical Society

Lester Farm of Route 7.



A view of the same house looking from the
opposite direction. (June, 1947)

Rutland Historical Society

Lester Farm Route 7 from back.



Rutland Historical Society

A barn from the Lester farm that was
totally destroyed.

Destroyed barn from Lester Farm.



The meadow of the Lester farm showing
some of the damage. The loss amounted
to \$20,000.

Rutland Historical Society

Meadow by the Lester Farm.



The power station in Mill Village
located on Route 7.

Rutland Historical Society

Power Station on Route 7 in Mill Village



The Post Road in June, 1947. Notice how a house sits in the middle of the road. This house had been carried for over a tenth of a mile.

Rutland Historical Society

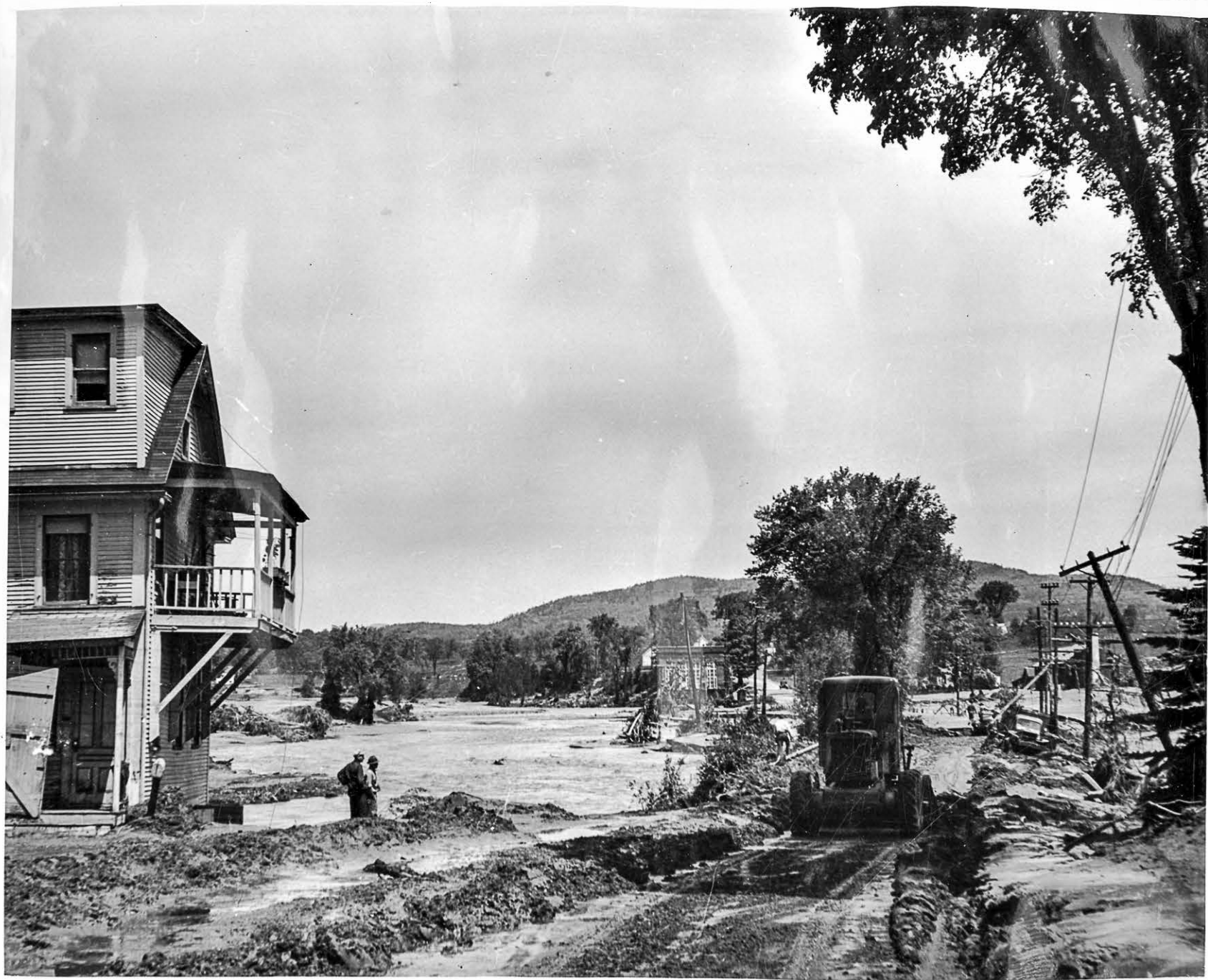
Post Road with house in middle of road carried over 1/10 of a mile. June 1947.



The evening of June 2nd., 1947, as the
water started to rise in Mill Village.

Rutland Historical Society

Mill Village, June 2, 1947.



Rutland Historical Society

The following morning, June 3rd. on

Route 7 June 3, 1947



People coming from surveying the damage
in Mill Village after the "Mad Dog" had
struck.

Rutland Historical Society

Surveying the damage in Mill Village



The house seen in the middle of this picture was, before the flood, located somewhere near the right hand corner.

Rutland Historical Society

Before the flood this house would have appeared on the right side of this photo.



The McKenzie Avenue Bridge in Mill Village. This was the oldest covered bridge in Rutland County. To the best of our information this bridge was built in or around 1742. It was destroyed in 1947 and at that time was about 205 years old.

284RS DEFOALS
SIXTY EIGHT

Rutland Historical Society

McKinley Avenue Bridge built in 1742. It was destroyed when it was 205 years old by the flood.



McKINLEY
Another view of the McKenzie
Bridge as the water was rising.

Rutland Historical Society

The McKinley Avenue Bridge as the water was rising.



This bridge was built for temporary use to replace the McKenzie Bridge. It was necessary as children had to attend school which was on the other side of the stream.

Rutland Historical Society

A temporary replacement for the McKinley Avenue Bridge.



This Army Bailey Bridge soon
took the place of the temporary bridge.
Total amount of damage to Mill
Village was estimated at \$100,000.

Rutland Historical Society

The Army Bailey bridge replaced the temporary bridge.



Patch's Dam on June 3rd., 1947.

Rutland Historical Society

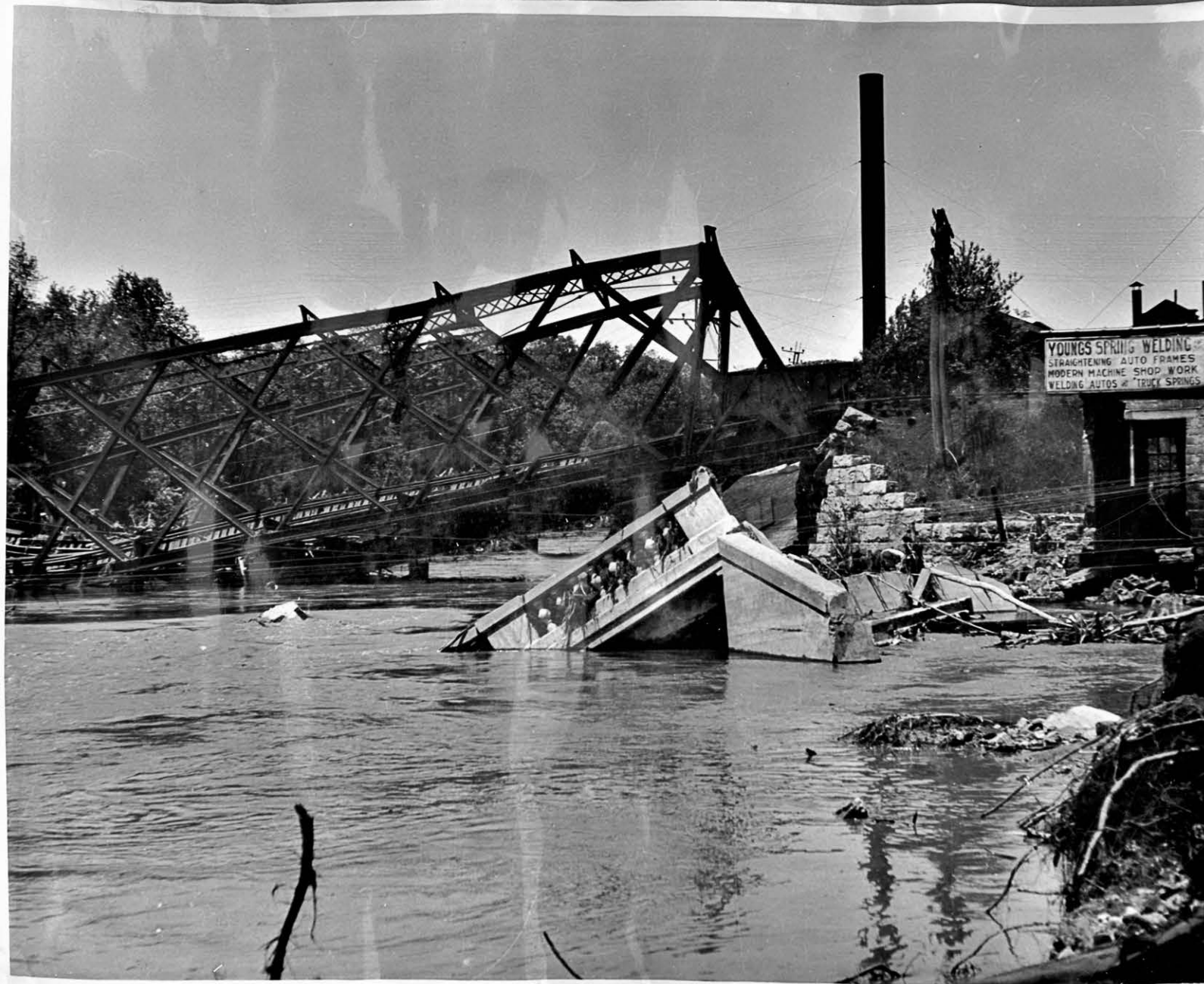
Patch's Dam June 3, 1947



The temporary railroad bridge which
has been constructed on wooden pilings.
(Cost: \$18,000)

Rutland Historical Society

Temporary railroad bridge.



What was left of the West Street Bridge .
The cost of rebuilding this bridge will
run from \$80,000 to \$90,000.

Rutland Historical Society

West Street Bridge after flood.



The wooden bridge which temporarily
takes the place of the West Street Bridge.

Rutland Historical Society

Temporary West Street Bridge.



River Street. June, 1947.

Rutland Historical Society

River Street, June 1947.



Patch's Dam rebuilt by June, 1948
at the cost of \$100,000.

Rutland Historical Society

Patch's Dam rebuilt. June, 1948



The old 1876 Bridge. Bit by the
"Mad Dog" and thoroughly destroyed.
Age 71.

Rutland Historical Society

1876 Bridge prior to flood.



The modern structure which now takes the place of the 1876 bridge. This bridge cost \$75,000 to construct.

Rutland Historical Society

1876 Bridge Replacement



The Rutland Railroad Bridge as it looked
on June 3rd., 1947. The cost of replacing
this bridge would be \$140,000.

Rutland Historical Society

Rutland Railroad Bridge June 3, 1947

A view of the Proctor Falls showing the tremendous flow of water which went over it on June 3rd., 1947. The wave reached a height of thirty-five feet. In order to take this picture the photographer was forced to take a round-about route from Rutland. To reach a spot ordinarily only six miles away he covered fifty-six miles.



Rutland Historical Society

Proctor Falls June 3, 1947. Wave height 35 feet.



A few days following the flood everyone was busy at the job of cleaning up. We caught these two young playmates busy at work. One works hard with a scrub brush. The other, a little bit bewildered stands ready to work with a broom twice her size. Neither one seems to realize that the steps they are attempting to clean belong to a house that has been destroyed.

Rutland Historical Society

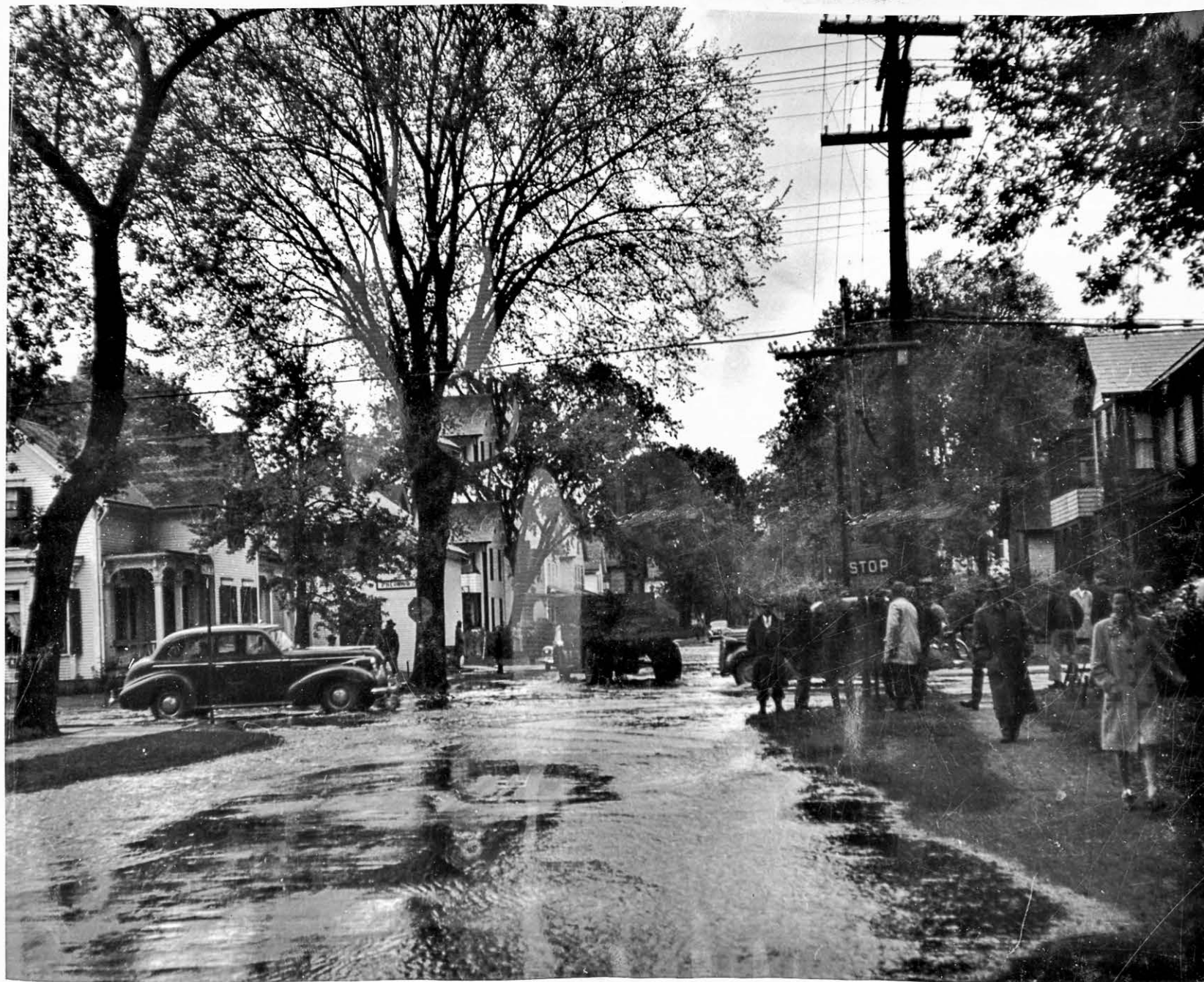
Playmates at work a few days after the flood.



Some Red Cross Workers hard at work. Here they are busy handing out refreshments to the laborers in the flood area.

Rutland Historical Society

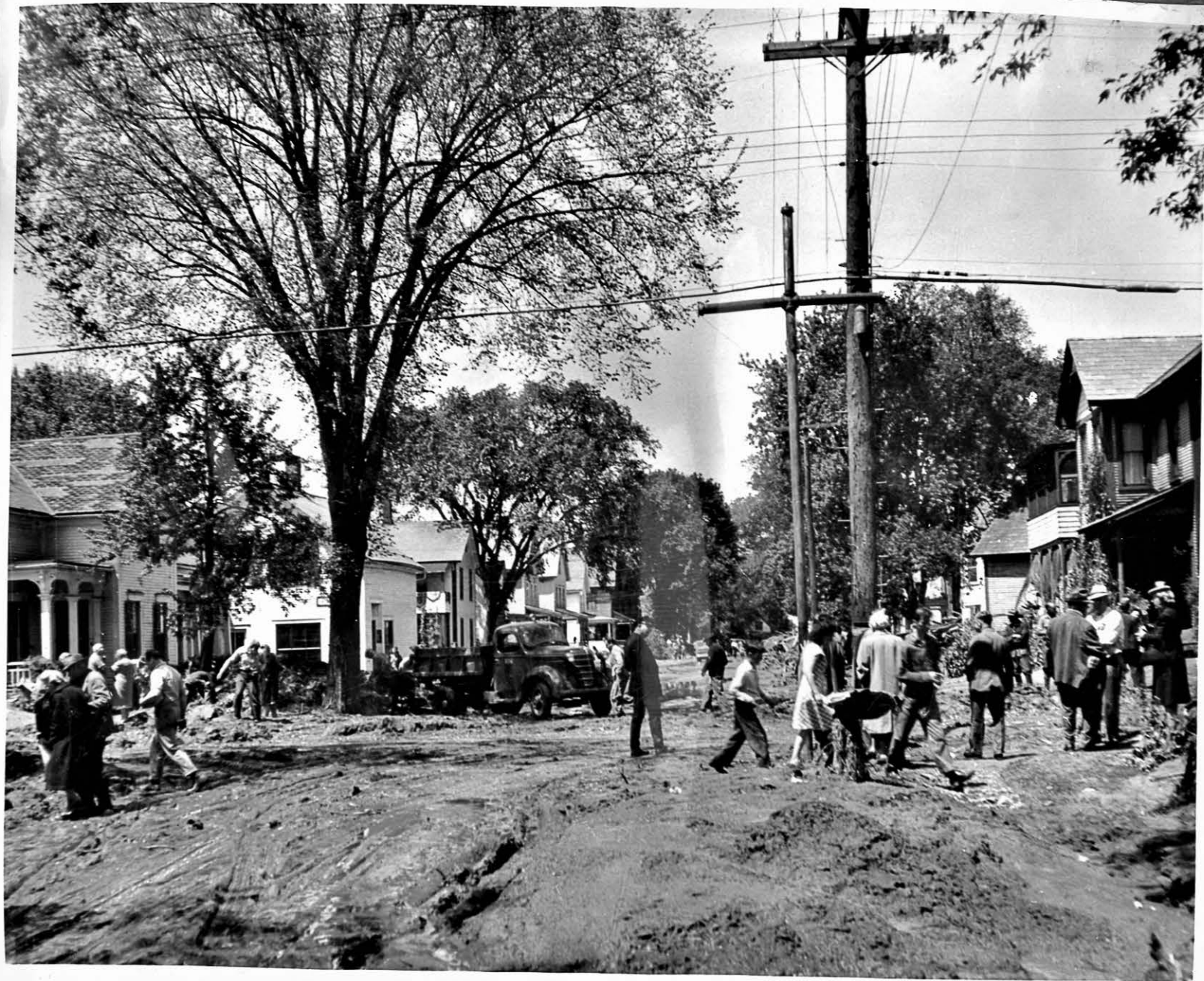
Red Cross workers handing out refreshments to the workers.



Rutland Historical Society

Cleveland Avenue in Rutland as the water started to rise. (Evening, June 2, 1947.)

Cleveland Avenue June 2, 1947 as the water starts to rise.



Cleveland Avenue June 3, 1947. Some curious onlookers come down to look over the damage.

Rutland Historical Society

Cleveland Avenue June 3, 1947



Water Street as the water rose higher and higher. People were being evacuated at this time.

Rutland Historical Society

Water Street evacuations.



Water Street after it had suffered the full force of the flood. Note how the houses have been thrown together like so many nine-pins. June 3, 1947

Rutland Historical Society

Water Street June 3, 1947. Houses were thrown together.



Cleveland Avenue. (June, 1947) This house was built at the cost of \$6,800.

Rutland Historical Society

Cleveland Avenue June, 1947



A view of the same house in June, 1948,
after it had been rebuilt at the cost of \$10,500.

Rutland Historical Society

Previous house rebuilt.



CLEVELAND AVE. - 6/4/47

Rutland Historical Society

Cleveland Avenue - 1947 Flood



Rutland Historical Society



EVACUATING AT MAPLE ST. NEAR SUMMER ST 6/3/47

Butland Historical Society

Evacuating at Maple Street near Summer - 1947 Flood



Rutland Historical Society



Rutland Historical Society





Rutland Historical Society



Rutland Historical Society

1947 Flood Damage

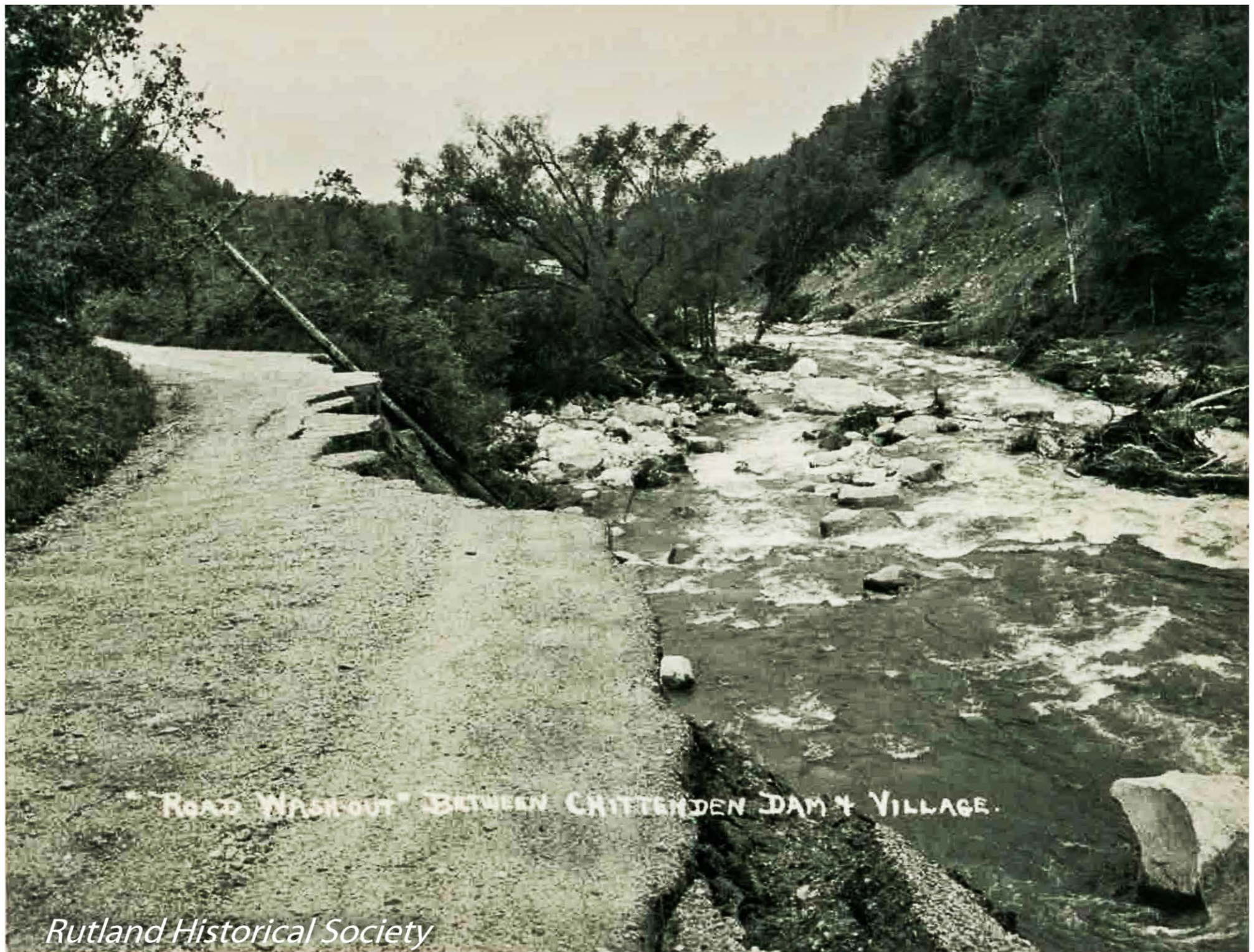


Rutland Historical Society



Rutland Historical Society

below Chittenden Dam - 1947 Flood



Rutland Historical Society

Road Washout Between Chittenden Dam & Village



MILL VILLAGE - 6/3/47 ^X W E ROUTE 7
S

Rutland Historical Society

Mill Village Route 7 - 1947 Flood



CHITTENDEN DAM and VILLAGE
Rutland Historical Society

Chittenden Dam & Village - 1947 Flood



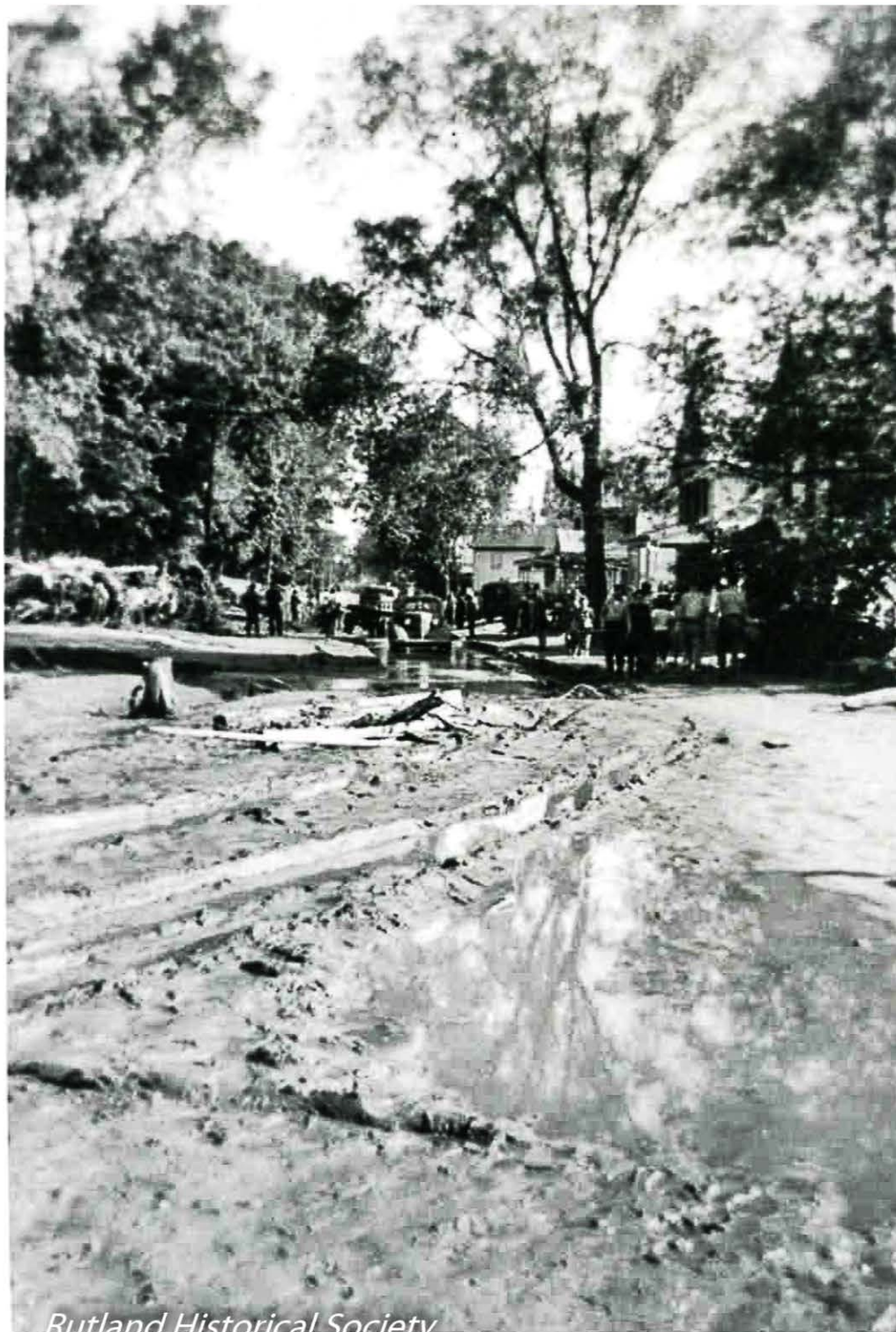
WEST ST. BRIDGE - 6/3/47

Rutland Historical Society

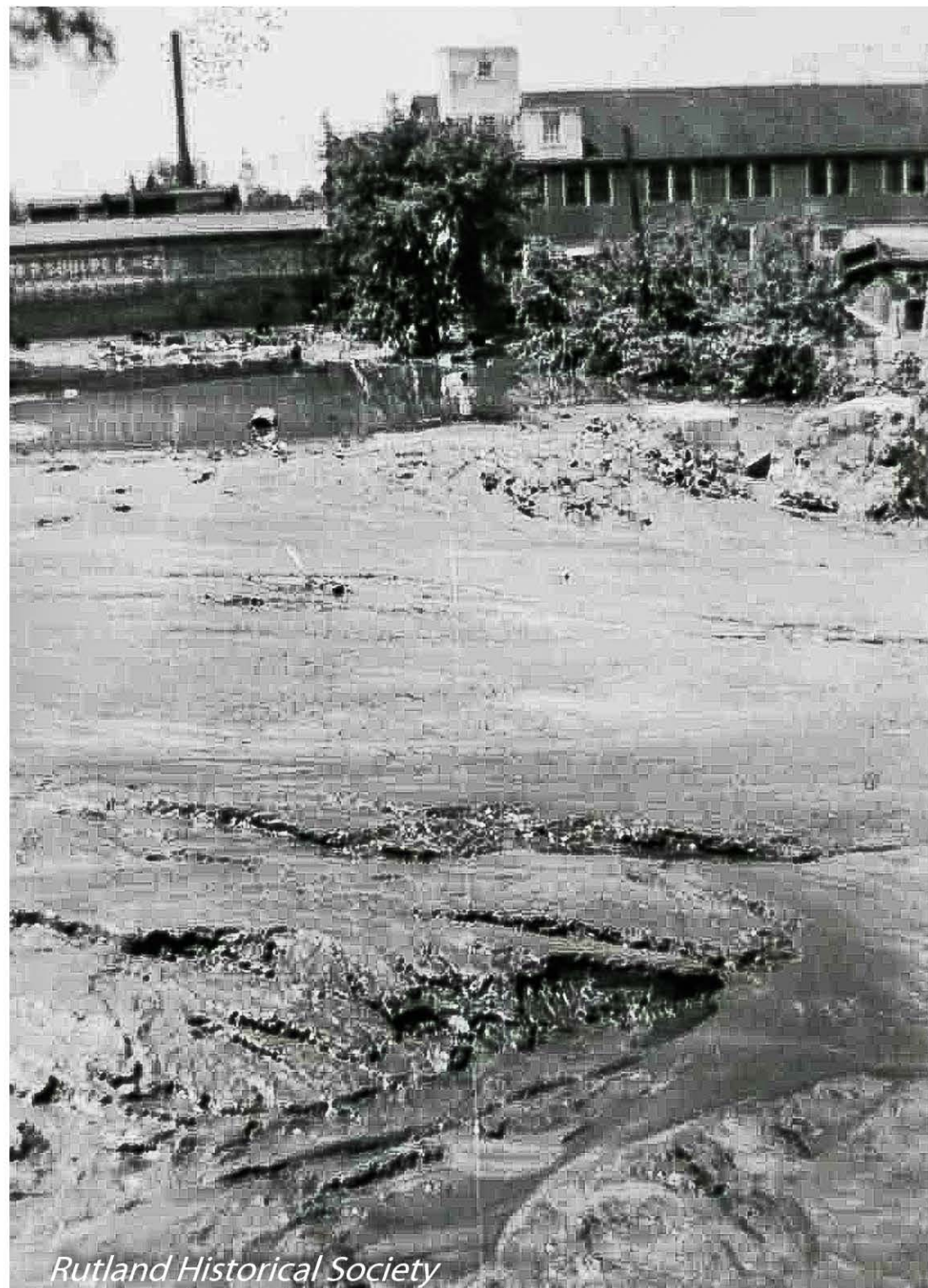
West Street Bridge - 1947 Flood



Rutland Historical Society



Rutland Historical Society



Rutland Historical Society



Rutland Historical Society



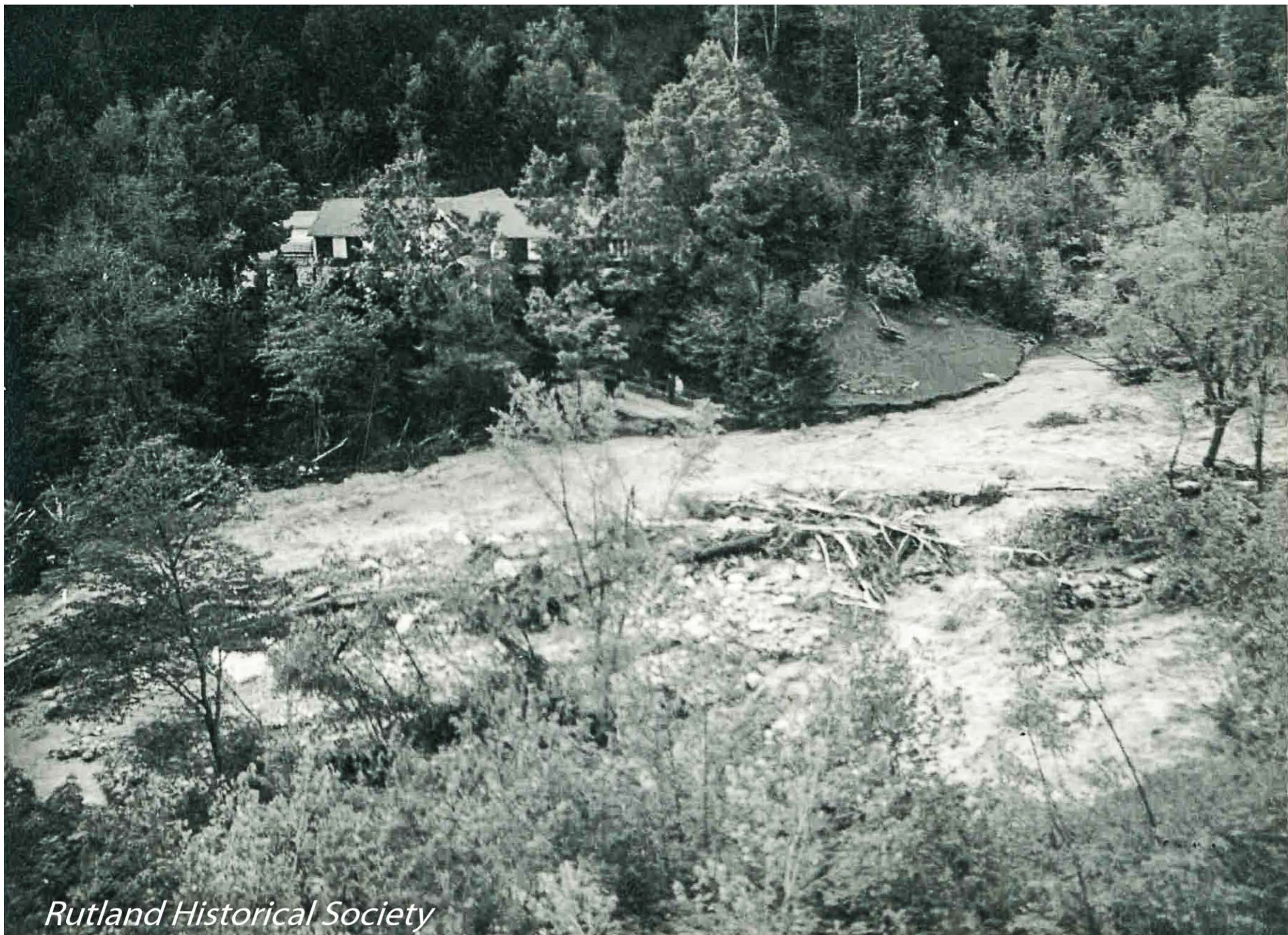
Rutland Historical Society



Rutland Historical Society



Rutland Historical Society



Rutland Historical Society

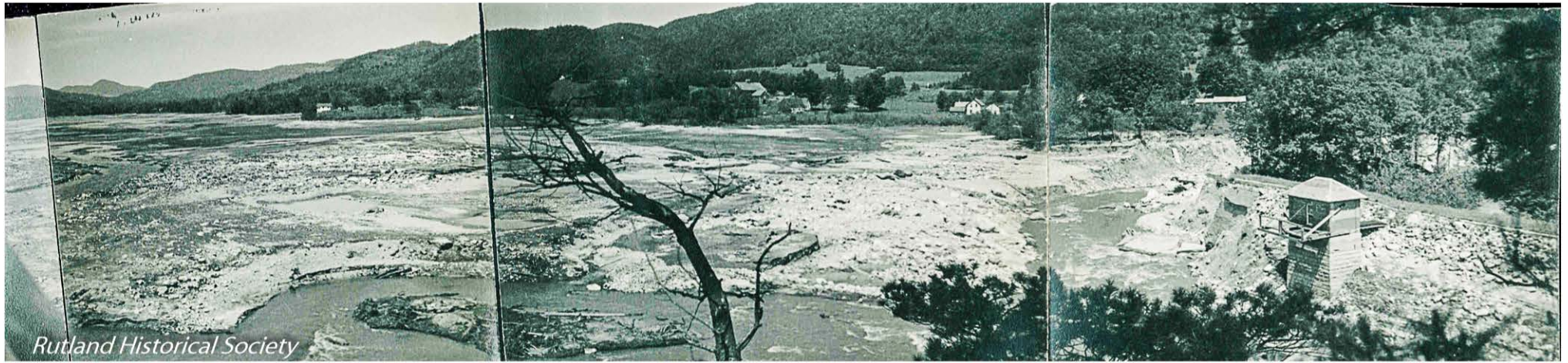




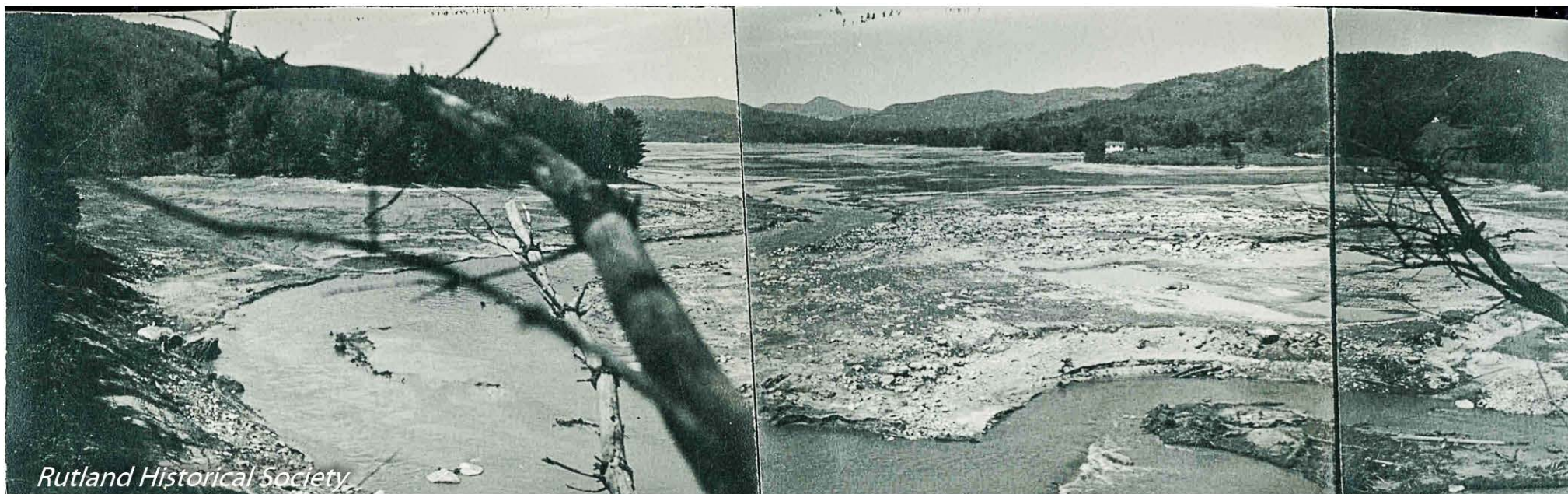
Rutland Historical Society



Rutland Historical Society



Rutland Historical Society

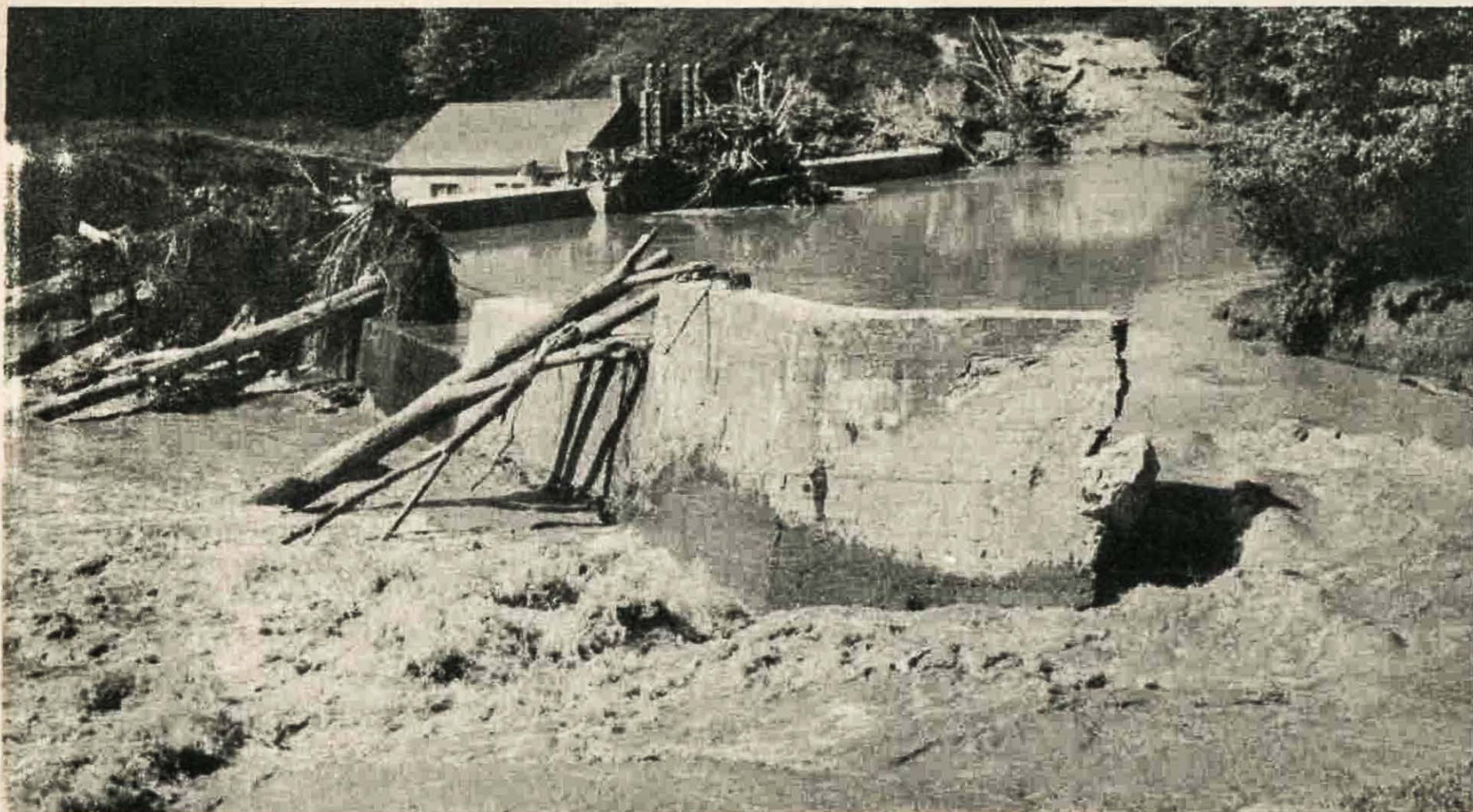


Rutland Historical Society



Rutland Historical Society

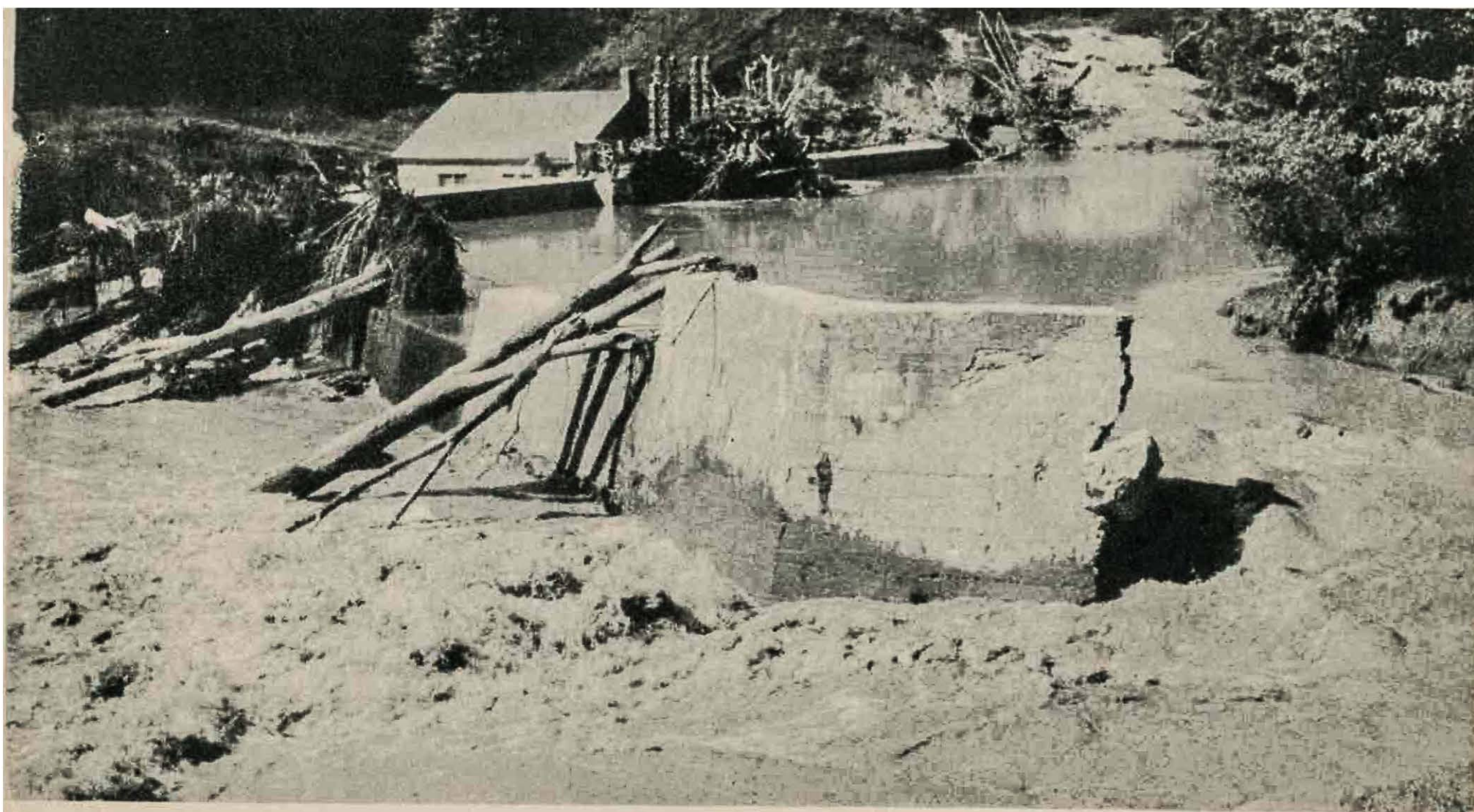
1947 Flood



Rutland Vermont Flood - - Patch Dam
Rutland Historical Society

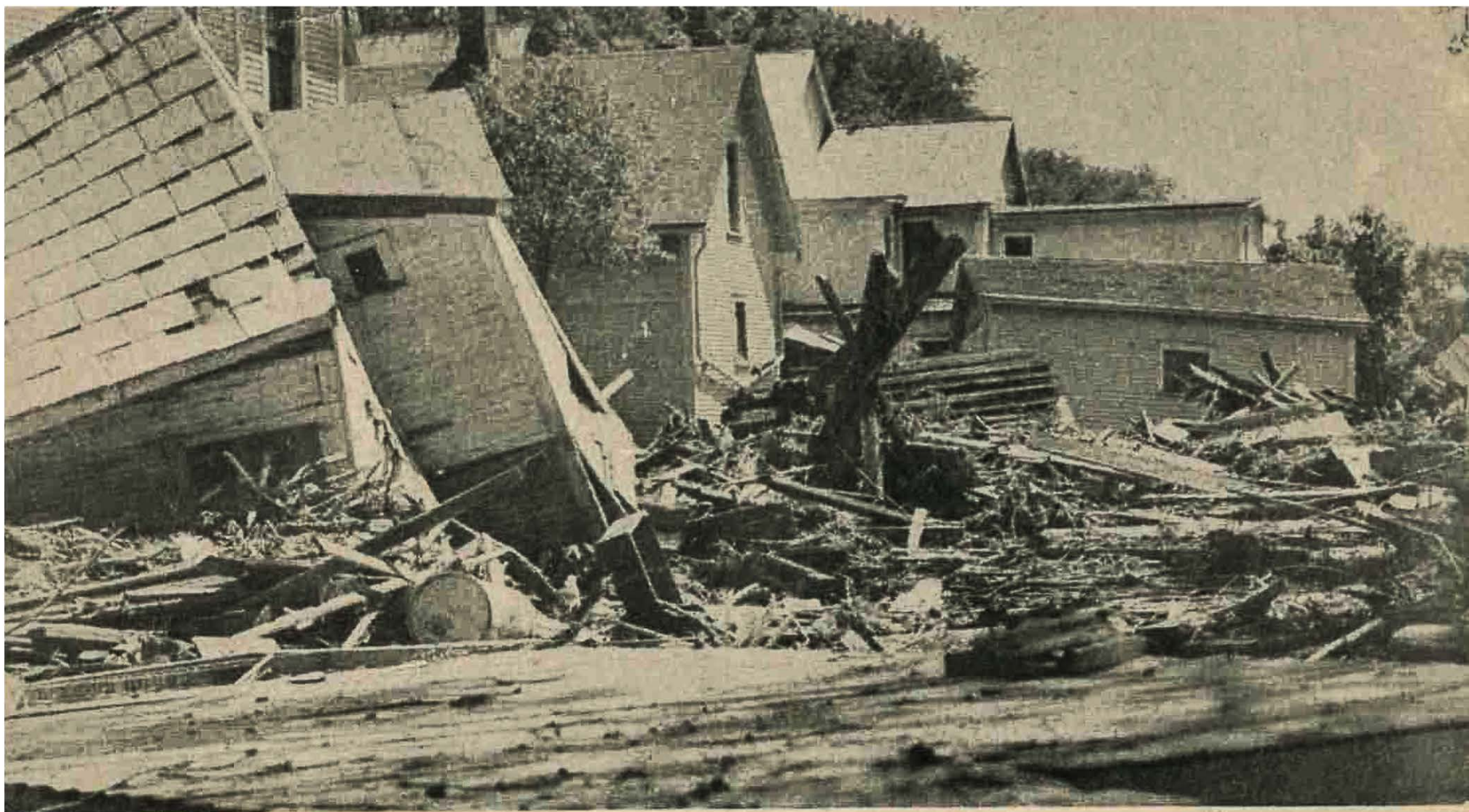


Rutland Vermont Flood -- Corner Baxter St. & Park Ave.
Rutland Historical Society



Rutland Historical Society Rutland Vermont Flood - - Patch Dam

Patch Dam - 1947 Flood



*Rutland Vermont Flood - Homes On Cleveland Ave.
Rutland Historical Society*

Where Gr's lived



Rutland Historical Society

State Street - 1947 Flood



Rutland Historical Society

Flood. State St.

State Street - 1947 Flood



Rutland Historical Society *State St.*

State Street - 1947 Flood



Rutland Historical Society

State St.

State Street - 1947 Flood



Rutland Historical Society

State St.

State Street - 1947 Flood